


VOR/DME PVD 115.6 Chan 103	APP CRS 326°	Rwy Idg TDZE Apt Elev	6081 50 54
--	------------------------	-----------------------------	---------------------------------------

VOR Z RWY 34

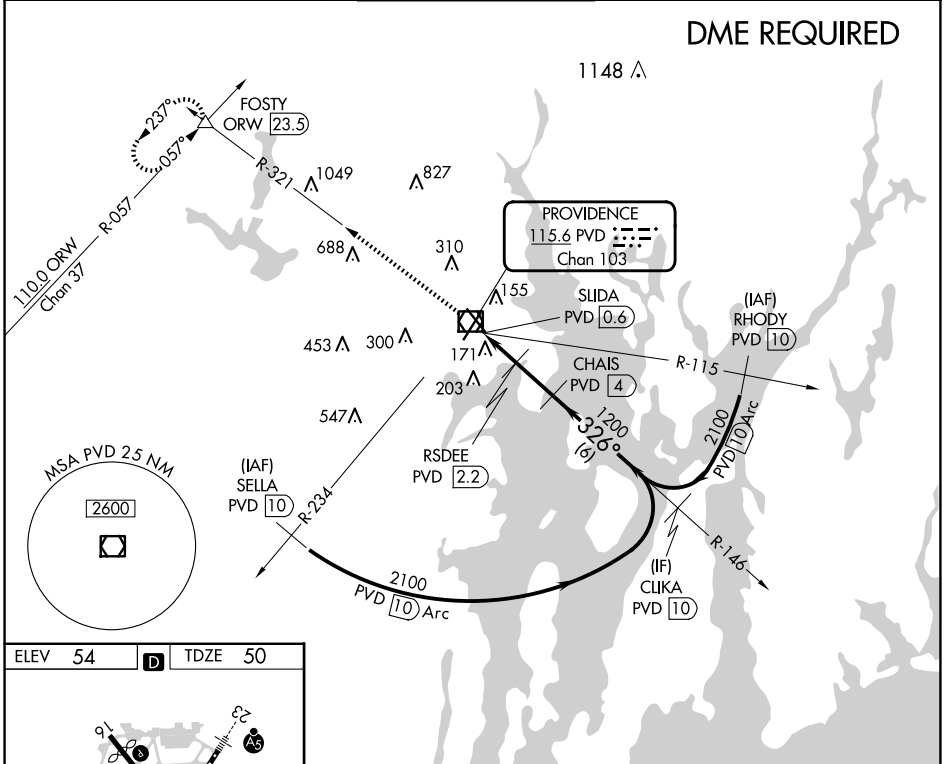
RHODE ISLAND TF GREEN INTL (PVD)

⚠ Rwy 34 helicopter visibility reduction below RVR 4000 NA.
⚠ DME required. For inop ALS, increase Cat A/B visibility to RVR 5500, and Cat C/D to RVR 6000.

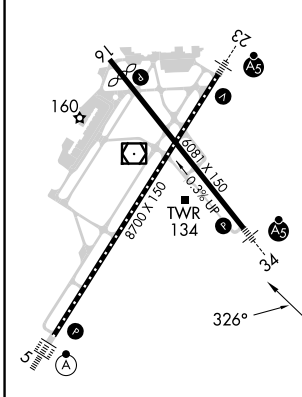
MALSR 

MISSED APPROACH: Climb to 2500 on PVD VOR/DME R-321 to FOSTY INT/ ORW 23.5 DME and hold.

D-ATIS 124.2	PROVIDENCE APP CON * 123.675 244.875	PROVIDENCE TOWER * 120.7 (CTAF) 0 257.8	GND CON 121.9 348.6	CLNC DEL 126.65 348.6
------------------------	--	--	-------------------------------	---------------------------------



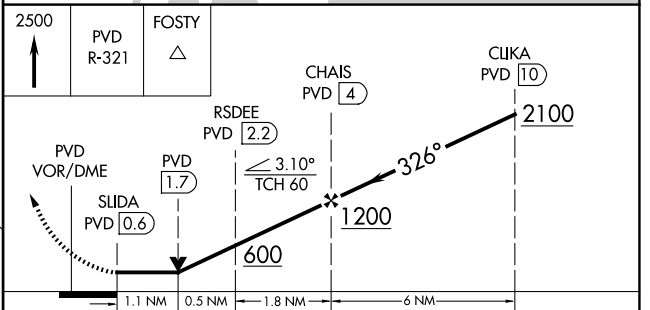
ELEV 54	D	TDZE 50
---------	----------	---------



TDZ/CL Rwy 5 **0**

REIL Rwy 16 **0**

HIRL Rwy 5-23 and 16-34 **0**



CATEGORY	A	B	C	D
S-34		440/40	390 (400-3/4)	
C CIRCLING	560-1 506 (600-1)	640-1 586 (600-1)	640-1½ 586 (600-1½)	860-2½ 806 (900-2½)

NE-1, 23 JAN 2025 to 20 FEB 2025

NE-1, 23 JAN 2025 to 20 FEB 2025