

# HI-ILS or LOC Z RWY 13

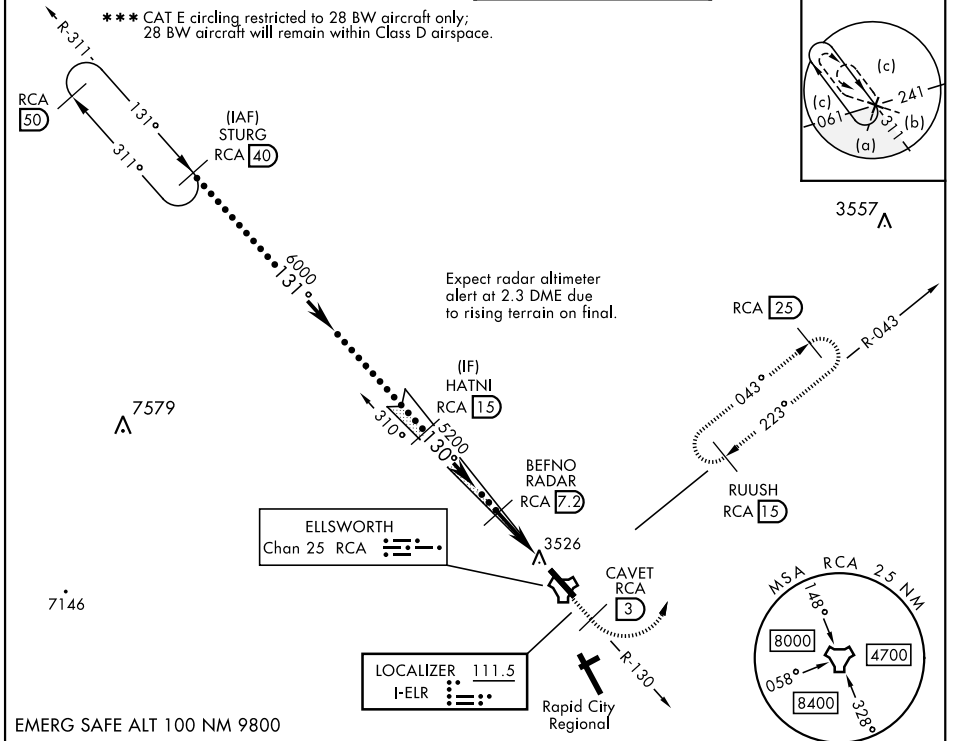
LOC I-ELR <b>111.5</b>	APCH CRS <b>130°</b>	Rwy ldg <b>13,497</b> TDZE <b>3276</b> Arpt Elev <b>3276</b>	[USAF]	ELLSWORTH AFB (KRCA)
---------------------------	-------------------------	--	--------	----------------------

RADAR or DME required.

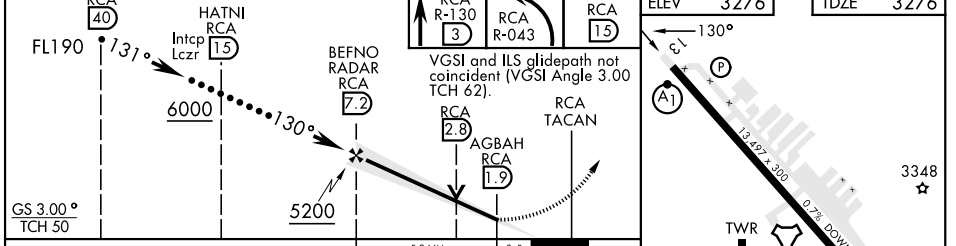
ALSF-1 MISSED APPROACH: Track outbound RCA R-130 to 3 DME (CAVET), then turn left to join RCA R-043 to 15 DME (RUUSH) and hold. Maintain 6000.

**▲** \* When ALS inop, increase RVR to 40 and vis to 3/4 mile.  
\*\* When ALS inop, increase vis to 1 3/8 miles.

ATIS ★ <b>120.625 269.9</b>	APP CON <b>119.5 259.1</b>	TOWER ★ <b>126.05 253.5</b>	GND CON <b>121.8 275.8</b>
--------------------------------	-------------------------------	--------------------------------	-------------------------------



EMERG SAFE ALT 100 NM 9800



CATEGORY	C	D	E	ELEV 3276 TDZE 3276															
	S-ILS 13 *	3476/24	200 (200-1/2)																
S-LOC 13 **	3780/55	504 (600-1)																	
*** CIRCLING	3880-1 3/4 604 (700-1 3/4)	3980-2 1/4 704 (800-2 1/4)	4040-2 3/4 764 (800-2 3/4)	HIRL Rwy 13-31 TWR															
	<table border="1"> <tr> <th colspan="5">FAF to MAP 5.3 NM</th> </tr> <tr> <td>Knots</td> <td>120</td> <td>140</td> <td>160</td> <td>180</td> <td>200</td> </tr> <tr> <td>Min:Sec</td> <td>2:39</td> <td>2:16</td> <td>1:59</td> <td>1:46</td> <td>1:35</td> </tr> </table>				FAF to MAP 5.3 NM					Knots	120	140	160	180	200	Min:Sec	2:39	2:16	1:59
FAF to MAP 5.3 NM																			
Knots	120	140	160	180	200														
Min:Sec	2:39	2:16	1:59	1:46	1:35														

RAPID CITY, SOUTH DAKOTA 44°09'N-103°06'W ELLSWORTH AFB (KRCA)

# HI-ILS or LOC Z RWY 13

NC-1, 23 JAN 2025 to 20 FEB 2025

NC-1, 23 JAN 2025 to 20 FEB 2025

