

HI-ILS or LOC Z RWY 31

LOC I-RCA 110.3	APCH CRS 310°	Rwy ldg 13,497 TDZE 3192 Arprt Elev 3276
---------------------------	-------------------------	---

[USAF]

ELLSWORTH AFB (KRCA)

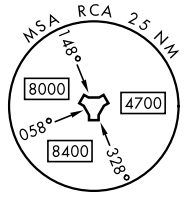
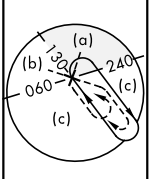
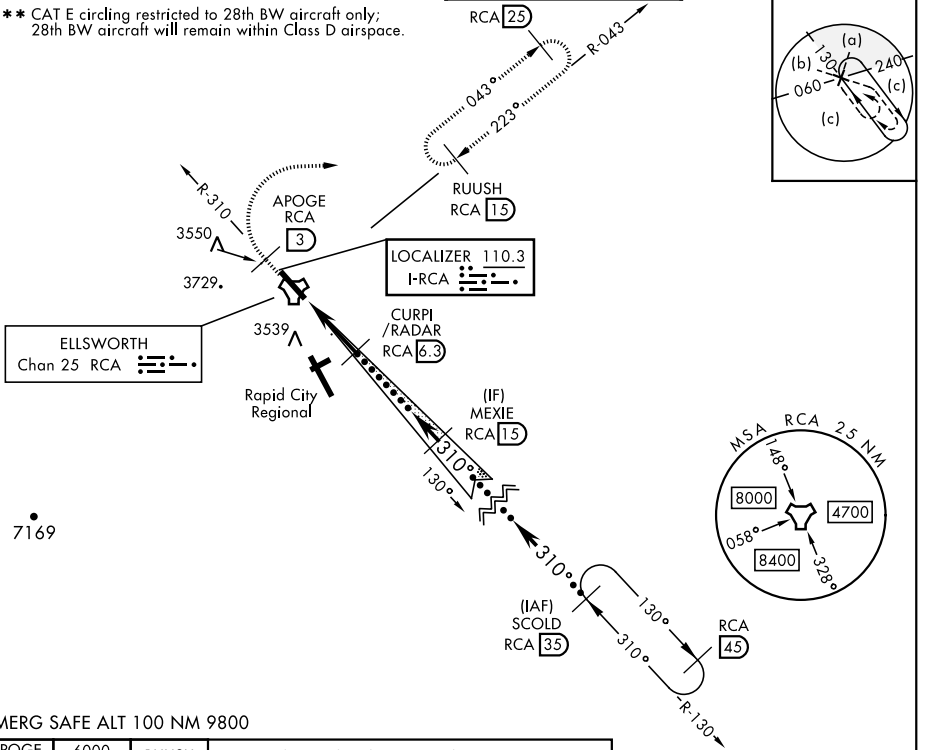
RADAR or DME required.

ALSF-1 MISSED APPROACH: Track outbound RCA R-310 to 3 DME (APOGE), then turn right to join RCA R-043 to 15 DME (RUUSH) and hold. Maintain 6000.

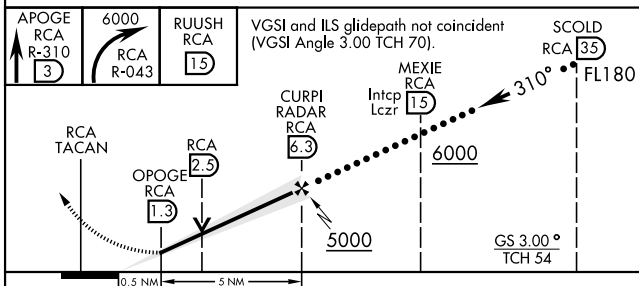
▼ * When ALS inop, increase RVR to 40, vis to 3/4 mile.
** When ALS inop, increase vis to 1 3/4 miles.

ATIS ★ 120.625 269.9	APP CON 119.5 259.1	TOWER ★ 126.05 253.5	GND CON 121.8 275.8
--------------------------------	-------------------------------	--------------------------------	-------------------------------

*** CAT E circling restricted to 28th BW aircraft only;
28th BW aircraft will remain within Class D airspace.

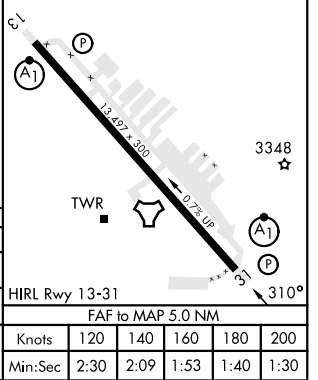


EMERG SAFE ALT 100 NM 9800



ELEV	3276	TDZE	3192
------	------	------	------

CATEGORY	C	D	E
S-ILS 31*	3392/24	200	(200-1/2)
S-LOC 31**	3800-1 3/8	608	(600-1 3/8)
*** CIRCLING	3880-1 3/4 604 (700-1 3/4)	3980-2 1/4 704 (800-2 1/4)	4040-2 3/4 764 (800-2 3/4)



Knots	120	140	160	180	200
Min:Sec	2:30	2:09	1:53	1:40	1:30

HI-ILS or LOC Z RWY 31

NC-1, 23 JAN 2025 to 20 FEB 2025

NC-1, 23 JAN 2025 to 20 FEB 2025