

ILS or LOC Y RWY 13

LOC I-ELR 111.5	APCH CRS 130°	Rwy ldg 13,497 TDZE 3276 Arpt Elev 3276	[USAF]	ELLSWORTH AFB (KRCA)
---------------------------	-------------------------	--	--------	----------------------

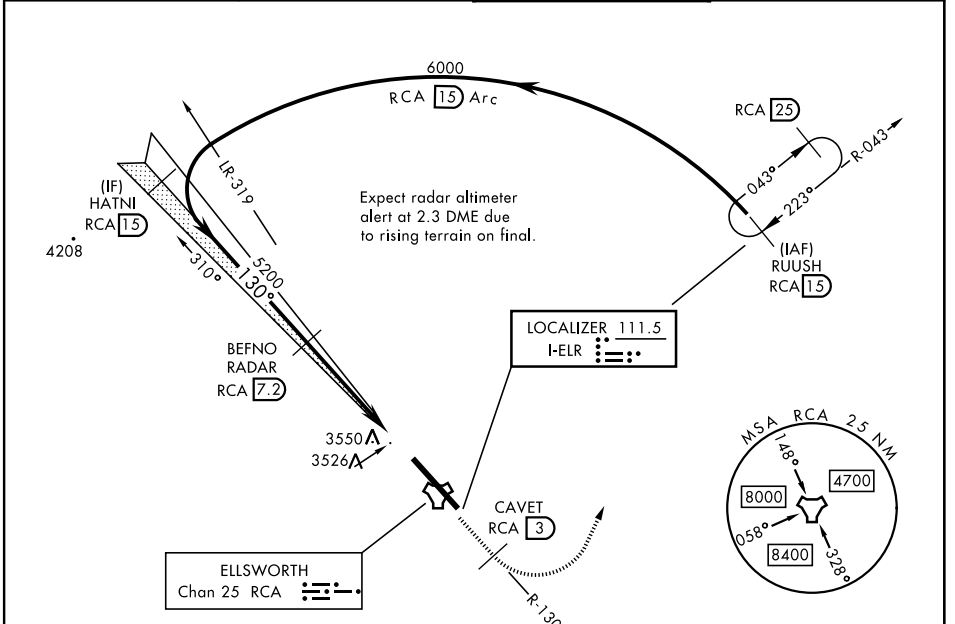
RADAR or DME required.

▼ *When ALS inop, increase RVR to 40 and vis to $\frac{3}{4}$ mile.
** When ALS inop, increase CAT AB RVR to 55 and vis to 1 mile, CAT CDE vis to $\frac{1}{8}$ miles.
*** CAT E circling restricted to 28th BW aircraft only; 28th BW aircraft will remain within Class D airspace.

ALSF-1

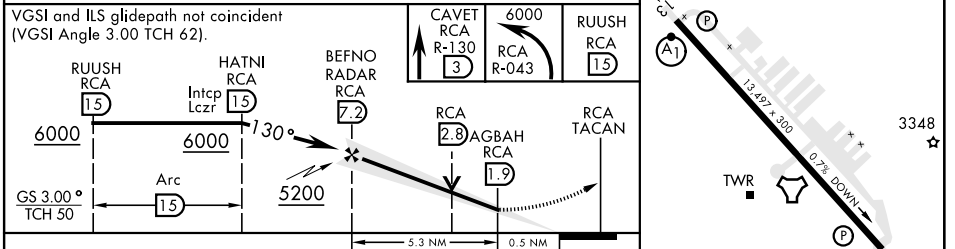
MISSED APPROACH: Track outbound RCA R-130 to 3 DME (CAVET), then turn left to join RCA R-043 to 15 DME (RUUSH) and hold. Maintain 6000.

ATIS ★ 120.625 269.9	APP CON 119.5 259.1	TOWER ★ 126.05 253.5	GND CON 121.8 275.8
--------------------------------	-------------------------------	--------------------------------	-------------------------------



5243
EMERG SAFE ALT 100 NM 9800

Rapid City Regional
 ELLSWORTH Chan 25 RCA
 LOCALIZER 111.5 I-ELR
 CAVET RCA 3
 RUUSH RCA 15
 MSA RCA 2.5 NM
 BEFNO RADAR RCA 7.2
 AGBAH RCA 1.9
 RCA TACAN



CATEGORY	A	B	C	D	E
S-ILS 13 *	3476/24		200	(200- $\frac{1}{2}$)	
S-LOC 13 **	3780/24 504 (600- $\frac{1}{2}$)		3780/55 504 (600-1)		
CIRCLING ***	3860-1	3880-1	3880-1 $\frac{3}{4}$	3980-2 $\frac{1}{4}$	4040-2 $\frac{3}{4}$
	584 (600-1)	604 (700-1)	604 (700-1 $\frac{3}{4}$)	704 (800-2 $\frac{1}{4}$)	764 (800-2 $\frac{3}{4}$)

HIRL Rwy 13-31					
FAF to MAP 5.3 NM					
Knots	60	90	120	150	180
Min:Sec	5:18	3:32	2:39	2:07	1:46

ILS or LOC Y RWY 13

NC-1, 23 JAN 2025 to 20 FEB 2025

NC-1, 23 JAN 2025 to 20 FEB 2025