

RAPID CITY, SOUTH DAKOTA

TACAN-A

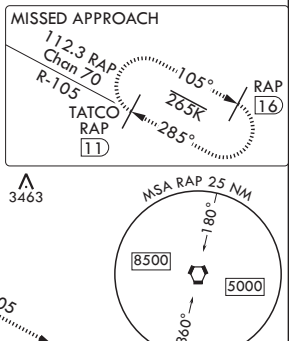
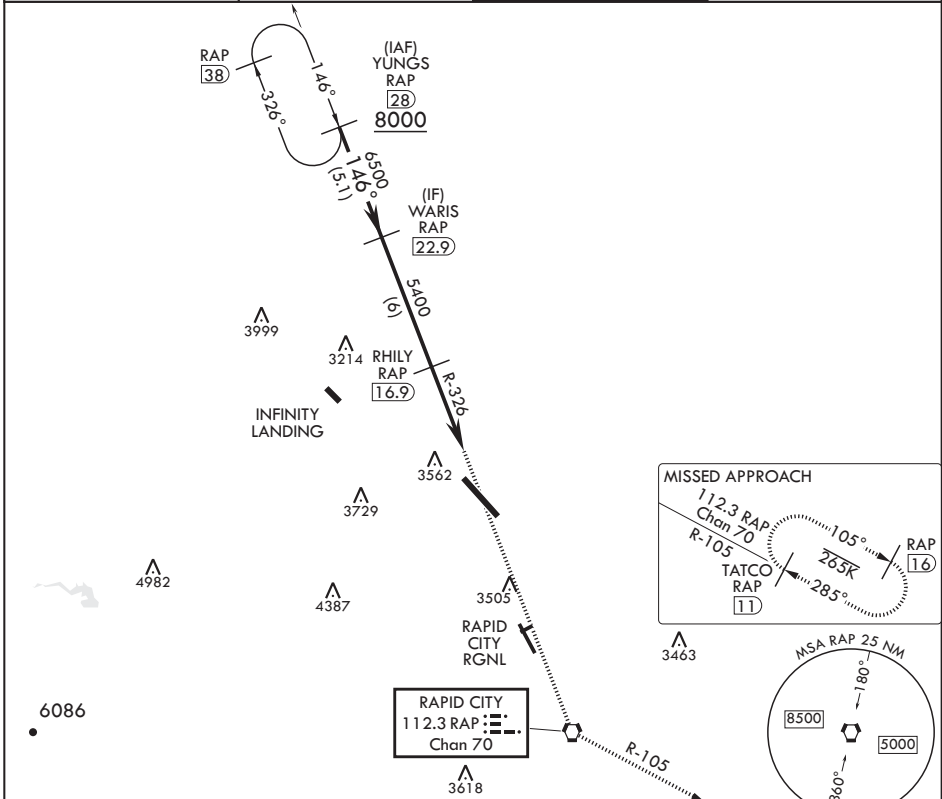
VORTAC RAP 112.3 Chan 70	APCH CRS 146°	Rwy Idg TDZE Arprt Elev N/A N/A 3276
--------------------------------	------------------	---

(USAF)

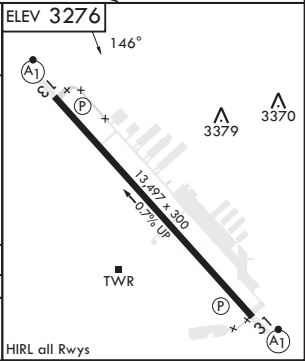
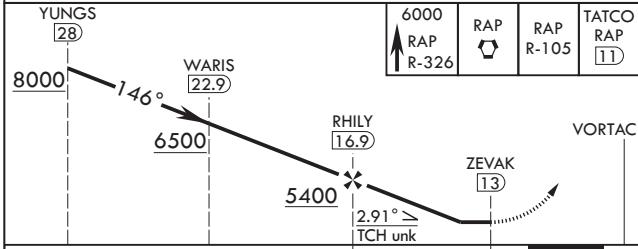
ELLSWORTH AFB (KRCA)

▼ * CAT E circling restricted to 28th BW aircraft only; 28th BW aircraft will remain within Class D airspace. MISSED APPROACH: Track inbound RAP R-326 to RAP VORTAC then turn left to join RAP R-105 outbound to 11 DME and hold. Maintain 6000.

ATIS* 120.625 269.9	APP CON 119.5 259.1	TOWER* 126.05 253.5	GND CON 121.8 275.8
------------------------	------------------------	------------------------	------------------------



EMERG SAFE ALT 100 NM 8800



CATEGORY	A	B	C	D	E
C CIRCLING*	3860-1 $\frac{1}{8}$ 584 (600-1 $\frac{1}{8}$)	3880-1 $\frac{1}{8}$ 604 (700-1 $\frac{1}{8}$)	3880-1 $\frac{1}{4}$ 604 (700-1 $\frac{1}{4}$)	3980-2 $\frac{1}{4}$ 704 (800-2 $\frac{1}{4}$)	4040-2 $\frac{3}{4}$ 764 (800-2 $\frac{3}{4}$)

HIRL all Rwys

RAPID CITY, SOUTH DAKOTA

44°09'N - 103°06'W

ELLSWORTH AFB (KRCA)

Amdt 2 22JUN17

TACAN-A

NC-1, 23 JAN 2025 to 20 FEB 2025

NC-1, 23 JAN 2025 to 20 FEB 2025