

WAAS CH <b>73008</b> <b>W15A</b>	APP CRS <b>151°</b>	Rwy Idg TDZE Apt Elev	<b>5431</b> <b>352</b> <b>352</b>
--	------------------------	-----------------------------	---

# RNAV (GPS) RWY 15

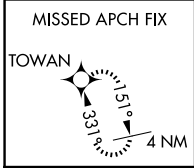
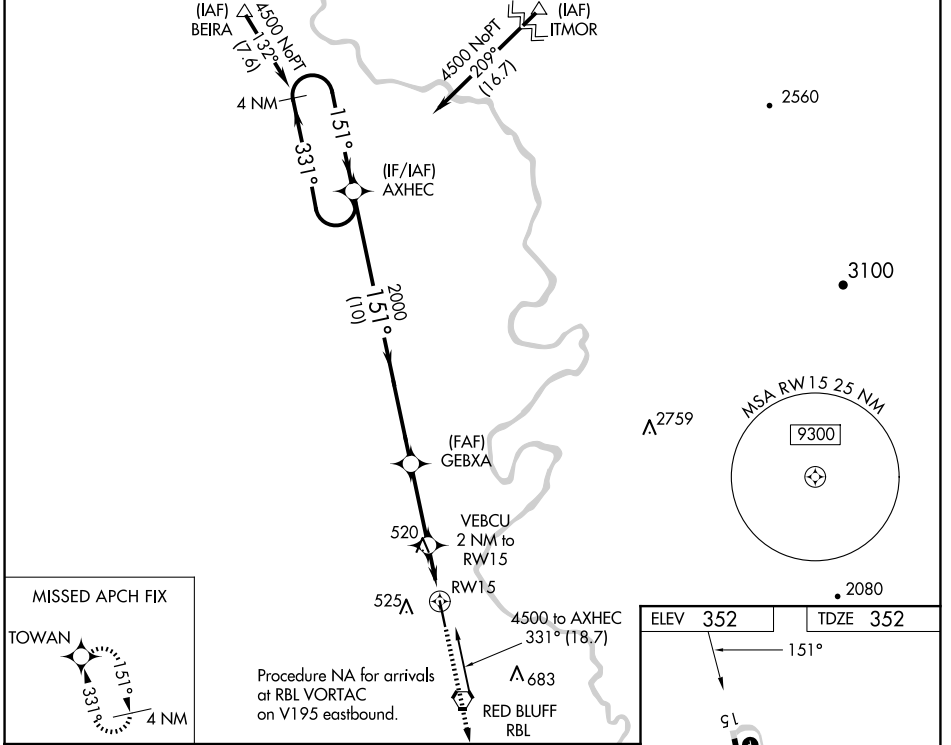
RED BLUFF MUNI (RBL)

RNP APCH.

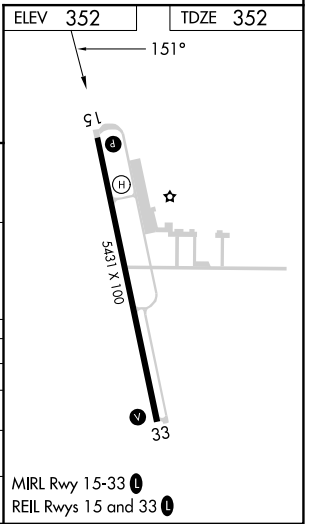
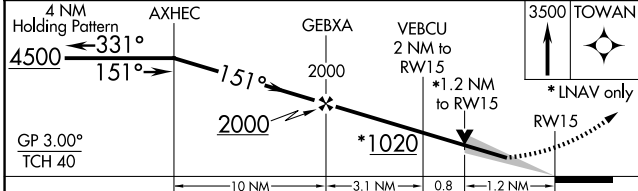
**⚠** Circling to Rwy 33 NA at night. Baro-VNAV and VDP NA when using Redding altimeter setting. For uncompensated Baro-VNAV systems, LNAV/VNAV NA below -2°C or above 54°C. When local altimeter setting not received; use Redding altimeter setting and increase LPV DA to 674 feet and increase LNAV/VNAV DA to 860 feet and increase visibility all Cats ½ SM; increase all MDAs 80 feet and LNAV visibility Cats C/D ½ SM and Circling visibility Cats C/D ½ SM.

MISSED APPROACH: Climb to 3500 direct TOWAN and hold.

ASOS <b>120.775</b>	OAKLAND CENTER <b>132.2 350.3</b>	UNICOM <b>123.0 (CTAF) 0</b>
------------------------	--------------------------------------	---------------------------------



Procedure NA for arrivals at RBL VORTAC on V195 eastbound.



CATEGORY	A	B	C	D
LPV DA	602-7/8 250 (300-7/8)			
LNAV/VNAV DA	788-1/4 436 (500-1/4)			
LNAV MDA	780-1	428 (500-1)	780-1/4	428 (500-1/4)
<b>C</b> CIRCLING	860-1	508 (600-1)	900-1/2 548 (600-1/2)	1060-2/4 708 (800-2/4)

SW-2, 23 JAN 2025 to 20 FEB 2025

SW-2, 23 JAN 2025 to 20 FEB 2025