

# COLIN EIGHT DEPARTURE

ATIS 119.15 263.025  
CLNC DEL  
127.55 348.6  
GND CON  
121.9 348.6  
RICHMOND TOWER  
121.1 257.8  
POTOMAC DEP CON  
126.4 282.375

BROOKE  
114.5 BRV   
Chan 92

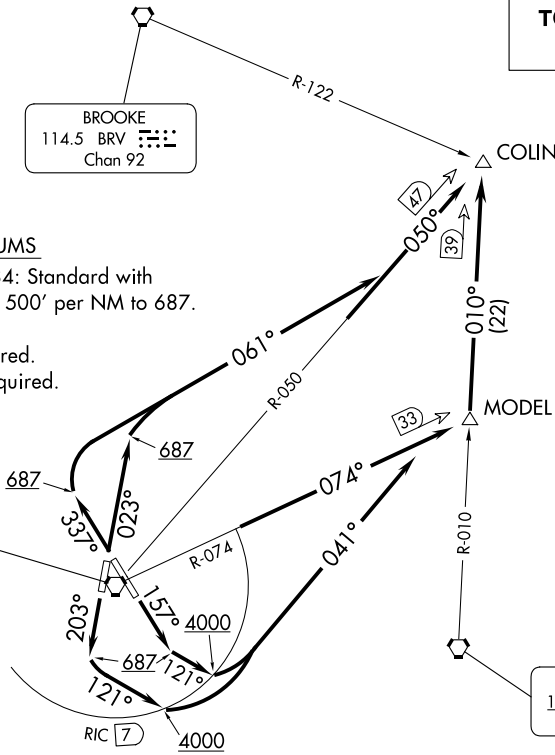
**TOP ALTITUDE:  
5000**

### TAKEOFF MINIMUMS

Rwys 2, 16, 20, 34: Standard with minimum climb of 500' per NM to 687.

NOTE: DME required.  
NOTE: RADAR required.

RICHMOND  
114.1 RIC   
Chan 88



NOTE: Chart note to scale.

NE-3, 23 JAN 2025 to 20 FEB 2025

NE-3, 23 JAN 2025 to 20 FEB 2025



## DEPARTURE ROUTE DESCRIPTION

TAKEOFF RUNWAY 2: Climb heading 023° to 687, then climbing right turn heading 061° to intercept RIC VORTAC R-050 to COLIN INT/RIC 47 DME, thence . . .

TAKEOFF RUNWAY 16: Climb heading 157° to 687, then climbing left turn heading 121° to cross RIC VORTAC 7 DME at or above 4000, then climbing left turn heading 041° to intercept RIC VORTAC R-074 to MODEL INT/RIC 33 DME, then on HCM VORTAC R-010 to COLIN INT/HCM 39 DME, thence . . .

TAKEOFF RUNWAY 20: Climb heading 203° to 687, then climbing left turn heading 121° to cross RIC VORTAC 7 DME at or above 4000, then climbing left turn heading 041° to intercept RIC VORTAC R-074 to MODEL INT/RIC 33 DME, then on HCM VORTAC R-010 to COLIN INT/HCM 39 DME, thence . . .

TAKEOFF RUNWAY 34: Climb heading 337° to 687, then climbing right turn heading 061° to intercept RIC VORTAC R-050 to COLIN INT/RIC 47 DME, thence . . .

. . . maintain 5000 or assigned altitude. Expect filed altitude within ten minutes after departure.

# COLIN EIGHT DEPARTURE