

**TOP ALTITUDE:
5000**

KALLI SEVEN DEPARTURE (RNAV)
(KALLI7.KALLI) 02DEC21

(KALLI7.KALLI) 24109
KALLI SEVEN DEPARTURE (RNAV)

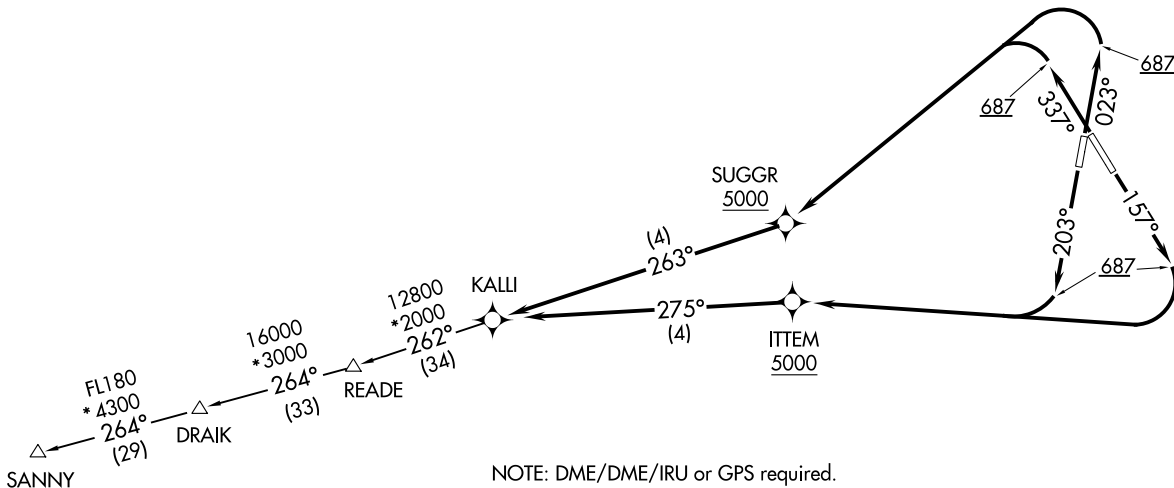
AL-347 (FAA)

RICHMOND INTL (RTO)
RICHMOND, VIRGINIA

ATIS
119.15 263.025
CLNC DEL
127.55 348.6
GND CON
121.9 348.6
RICHMOND TOWER
121.1 257.8
POTOMAC DEP CON
126.75 307.2

TAKEOFF MINIMUMS

Rwys 2, 16, 20, 34: Standard with minimum climb of 500' per NM to 687.



NOTE: DME/DME/IRU or GPS required.
NOTE: RNAV 1.
NOTE: RADAR required for non-GPS equipped aircraft.

NOTE: Chart not to scale.

(NARRATIVE ON FOLLOWING PAGE)

RICHMOND, VIRGINIA
RICHMOND INTL (RTO)

KALLI SEVEN DEPARTURE (RNAV)



DEPARTURE ROUTE DESCRIPTION

TAKEOFF RUNWAY 2: Climb on heading 023° to 687, then climbing left turn direct to cross SUGGR at or above 5000, then on track 263° to KALLI, thence....

TAKEOFF RUNWAY 16: Climb on heading 157° to 687, then climbing right turn direct to cross ITTEM at or above 5000, then on track 275° to KALLI, thence....

TAKEOFF RUNWAY 20: Climb on heading 203° to 687, then climbing right turn direct to cross ITTEM at or above 5000, then on track 275° to KALLI, thence....

TAKEOFF RUNWAY 34: Climb on heading 337° to 687, then climbing left turn direct to cross SUGGR at or above 5000, then on track 263° to KALLI, thence....

....(transition). Maintain 5000, expect filed altitude ten minutes after departure.

DRAIK TRANSITION (KALLI7.DRAIK)

READE TRANSITION (KALLI7.READE)

SANNY TRANSITION (KALLI7.SANNY)

NE-3, 23 JAN 2025 to 20 FEB 2025

NE-3, 23 JAN 2025 to 20 FEB 2025