

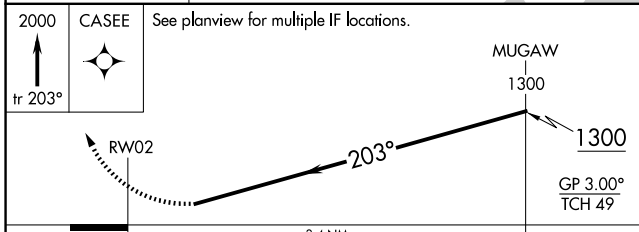
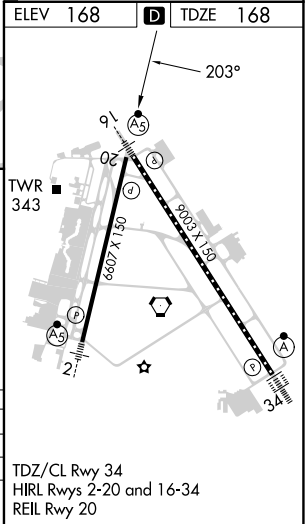
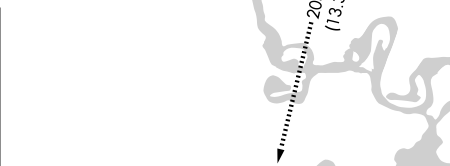
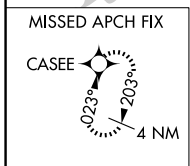
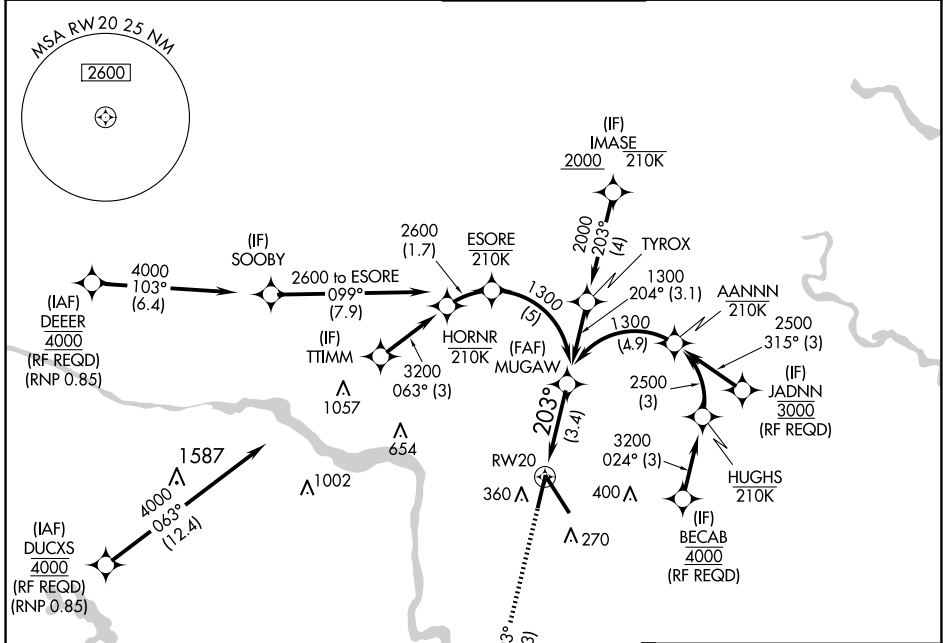
| | | |
|-------------|----------|-------------|
| APP CRS | Rwy Idg | 6607 |
| 203° | TDZE | 168 |
| | Apt Elev | 168 |

RNAV (RNP) Y RWY 20

RICHMOND INTL (RIC)

| | |
|--|--|
| RNP AR APCH. | MISSED APPROACH: Climb to 2000 on track 203° CASEE and hold. |
| ▼ For uncompensated Baro-VNAV systems, procedure NA below -11°C or above 54°C. | |

| | | | | |
|-----------------------|---|--------------------|--------------------|---------------------|
| ATIS | POTOMAC APP CON | RICHMOND TOWER | GND CON | CLNC DEL |
| 119.15 263.025 | 126.4 282.375 (001°-185°) 126.75 307.2 (186°-360°) | 121.1 257.8 | 121.9 348.6 | 127.55 348.6 |



| CATEGORY | A | B | C | D |
|-------------|---|--------|--------------|---|
| RNP 0.11 DA | | 505-1 | 337 (400-1) | |
| RNP 0.30 DA | | 613-1½ | 445 (500-1½) | |

AUTHORIZATION REQUIRED

NE-3, 23 JAN 2025 to 20 FEB 2025

NE-3, 23 JAN 2025 to 20 FEB 2025