

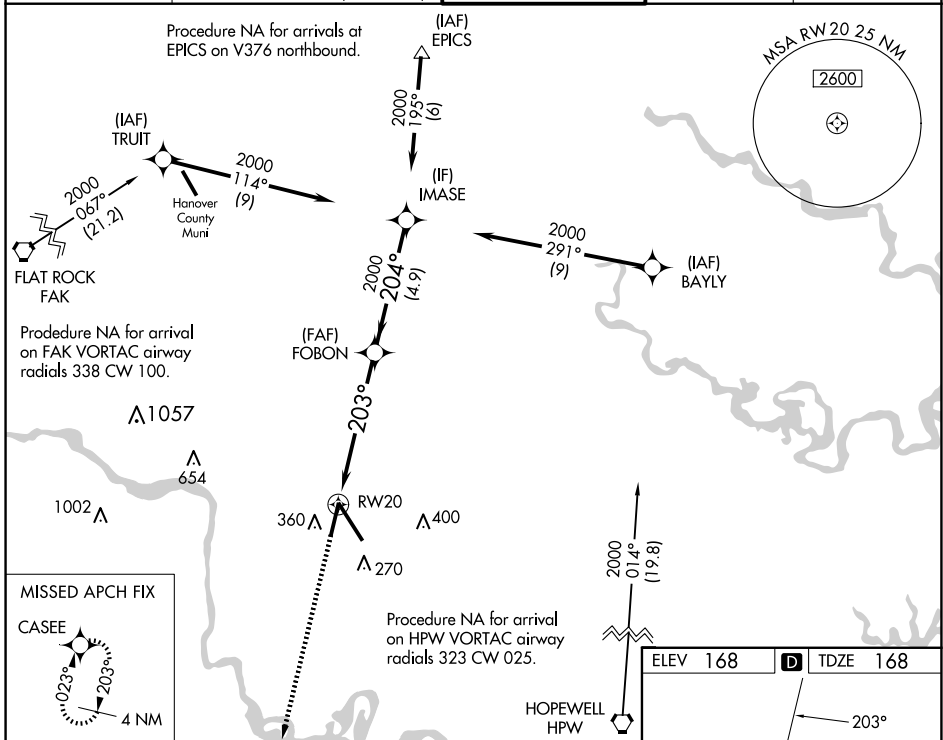
WAAS CH <b>69320</b> <b>W20A</b>	APP CRS <b>203°</b>	Rwy Idg TDZE <b>168</b> Apt Elev <b>168</b>
--	------------------------	---

# RNAV (GPS) Z RWY 20

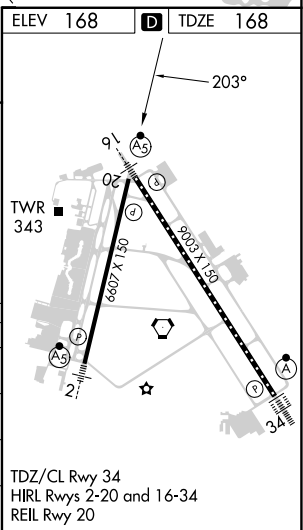
RICHMOND INTL (RIC)

RNP APCH.	MISSED APPROACH: Climb to 2000 direct CASEE and hold.
-----------	--

ATIS <b>119.15 263.025</b>	POTOMAC APP CON <b>126.4 282.375</b> (001°-185°) <b>126.75 307.2</b> (186°-360°)	RICHMOND TOWER <b>121.1 257.8</b>	GND CON <b>121.9 348.6</b>	CLNC DEL <b>127.55 348.6</b>
-------------------------------	--	--------------------------------------	-------------------------------	---------------------------------



2000	CASEE	*LNAV only.	FOBON	IMASE
↑	✧	*1.5 NM to RWY20	2000	2000
RWY20		203°	204°	2000
1.5 NM		4.1 NM	4.9 NM	GP 3.00° TCH 49
CATEGORY	A	B	C	D
LPV DA		464-7/8	296 (300-7/8)	
LNAV/VNAV DA		603-1 1/2	435 (500-1 1/2)	
LNAV MDA	680-1	512 (600-1)	680-1 3/8	512 (600-1 3/8)
CIRCLING	680-1	512 (600-1)	700-1 1/2 532 (600-1 1/2)	720-2 552 (600-2)



NE-3, 23 JAN 2025 to 20 FEB 2025

NE-3, 23 JAN 2025 to 20 FEB 2025