

SPIDR FIVE ARRIVAL (RNAV)

RNAV 1 - DME/DME/IRU or GPS.
RADAR required.

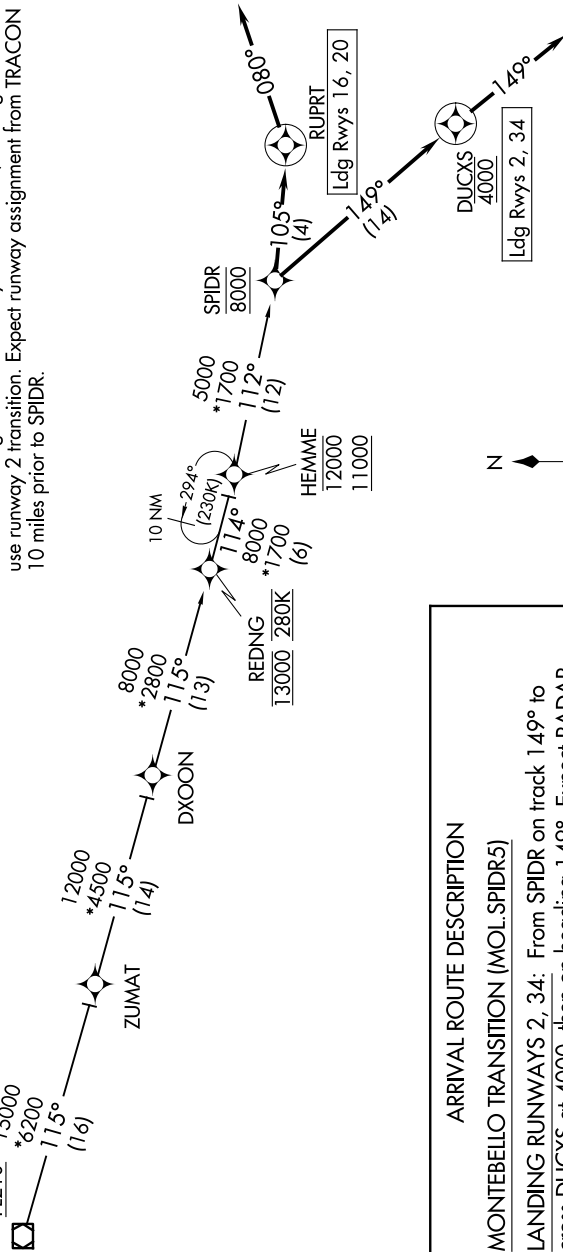
NOTE: Jet aircraft only.
NOTE: Landing south use runway 16 transition, landing north use runway 2 transition. Expect runway assignment from TRACON 10 miles prior to SPIDR.

NE-3, 23 JAN 2025 to 20 FEB 2025

POTOMAC APP CON
126.75 307.2
ATIS
119.15 263.025

MONTEBELLO

MOL
FL210
*15000
*6200



ARRIVAL ROUTE DESCRIPTION

MONTEBELLO TRANSITION (MOL.SPIDR5)

LANDING RUNWAYS 2, 34: From SPIDR on track 149° to cross DUCXS at 4000, then on heading 149°. Expect RADAR vectors to final approach course.

LANDING RUNWAYS 16, 20: From SPIDR on track 105° to RUPRT then on heading 080°. Expect RADAR vectors to final approach course.

NOTE: Chart not to scale.

NE-3, 23 JAN 2025 to 20 FEB 2025

SPIDR FIVE ARRIVAL (RNAV)

(SPIDR.SPIDR5) 26DEC24