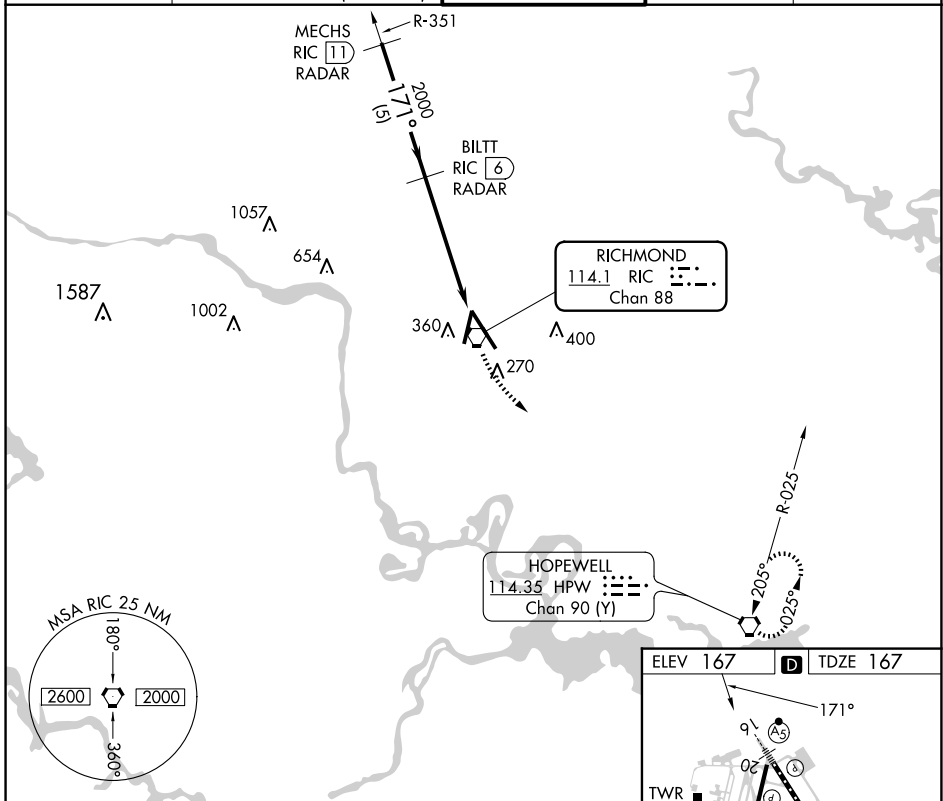


VORTAC RIC <b>114.1</b> Chan <b>88</b>	APP CRS <b>171°</b>	Rwy Idg TDZE <b>167</b> Apt Elev <b>167</b>	<b>9003</b>
--	------------------------	---	-------------

# VOR RWY 16

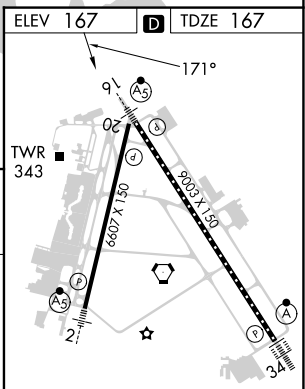
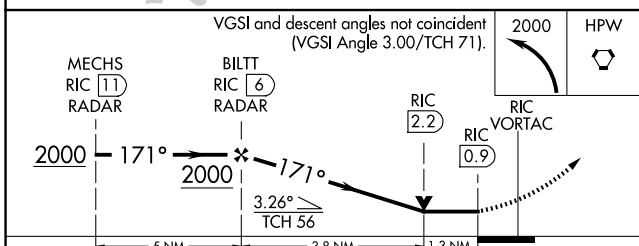
RICHMOND INTL (RIC)

DME or RADAR required. RADAR required for procedure entry.		MALSR	MISSED APPROACH: Climbing left turn to 2000 direct HPW VORTAC and hold.	
▼ Rwy 16 helicopter visibility reduction below RVR 4000 NA. For inop ALS, increase S-16 Cat A/B visibility to RVR 5500, and Cat C/D to 1 3/8 SM.				
ATIS <b>119.15 263.025</b>	POTOMAC APP CON <b>126.4 282.375</b> (001°-185°) <b>126.75 307.2</b> (186°-360°)	RICHMOND TOWER <b>121.1 257.8</b>	GND CON <b>121.9 348.6</b>	CLNC DEL <b>127.55 348.6</b>



NE-3, 23 JAN 2025 to 20 FEB 2025

NE-3, 23 JAN 2025 to 20 FEB 2025



ELEV 167	TDZE 167		
TDZ/CL Rwy 34		HRL Rwys 2-20 and 16-34	
REIL Rwy 20		FAF to MAP 5.1 NM	
CATEGORY	A	B	D
S-16	640/40 473 (500-3/4)		640/50 473 (500-1)
CIRCLING	660-1 493 (500-1)	700-1 1/2 533 (600-1 1/2)	720-2 553 (600-2)
	Knots	60	90 120 150 180
	Min:Sec	5:06	3:24 2:33 2:02 1:42