

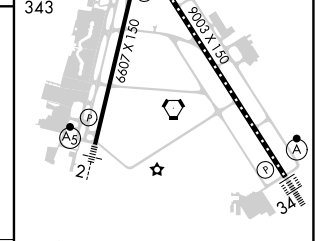
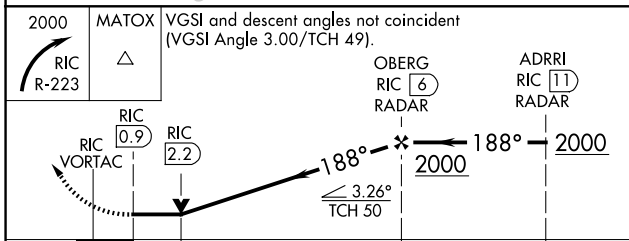
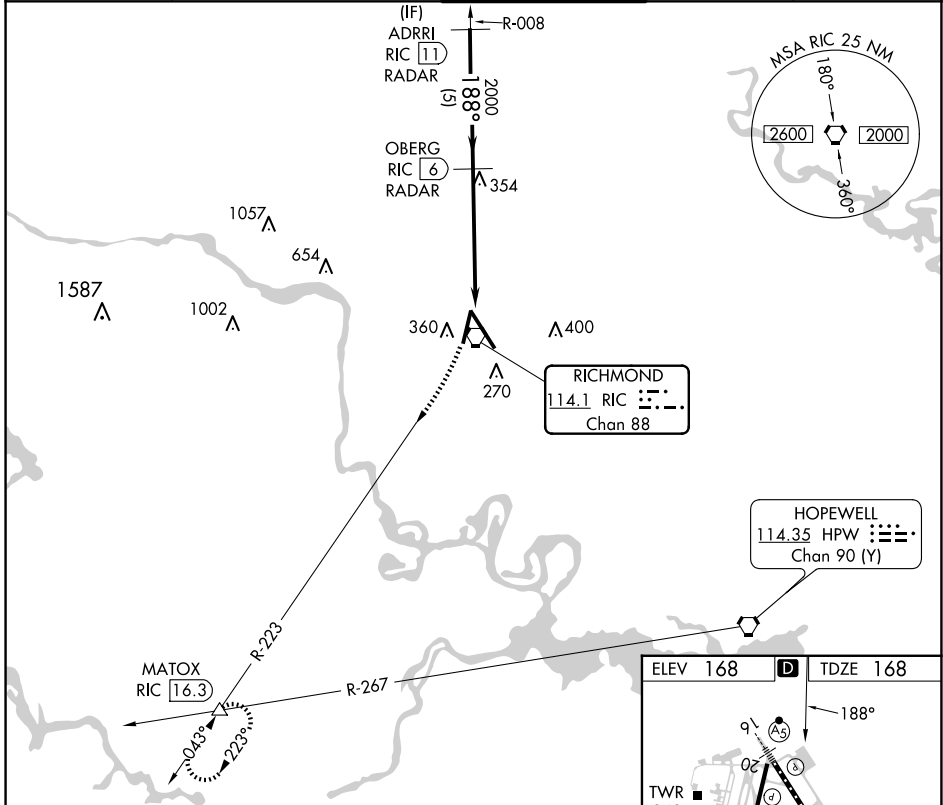
VORTAC RIC 114.1 Chan 88	APP CRS 188°	Rwy Idg 6607 TDZE 168 Apt Elev 168
--	------------------------	---

VOR RWY 20

RICHMOND INTL (RIC)

RADAR required for procedure entry. DME or RADAR required. MISSED APPROACH: Climbing right turn to 2000 on RIC R-223 to MATOX INT/RIC 16.3 DME and hold.

ATIS 119.15 263.025	POTOMAC APP CON 126.4 282.375 (001°-185°) 126.75 307.2 (186°-360°)	RICHMOND TOWER 121.1 257.8	GND CON 121.9 348.6	CLNC DEL 127.55 348.6
-------------------------------	--	--------------------------------------	-------------------------------	---------------------------------



2000 MATOX	VGSIs and descent angles not coincident (VGSIs Angle 3.00/TCH 49).			
RIC R-223	RIC 0.9	RIC 2.2	OBERG RIC 6 RADAR	ADRR1 RIC 11 RADAR
CATEGORY	A	B	C	D
S-20	660-1	492 (500-1)	660-1 $\frac{3}{8}$	492 (500-1 $\frac{3}{8}$)
C CIRCLING	660-1	492 (500-1)	700-1 $\frac{1}{2}$ 532 (600-1 $\frac{1}{2}$)	720-2 552 (600-2)

NE-3, 23 JAN 2025 to 20 FEB 2025

NE-3, 23 JAN 2025 to 20 FEB 2025

TWZ/CL Rwy 34	ELEV 168 TDZE 168				
HIRL Rwys 2-20 and 16-34	D				
REIL Rwy 20	188°				
FAF to MAP 5.2 NM					
Knots	60	90	120	150	180
Min:Sec	5:12	3:28	2:36	2:05	1:44