

RIVERSIDE, CALIFORNIA

# RNAV (GPS) RWY 32

WAAS CH 91364 W32A	APCH CRS 315°	Rwy ldg TDZE Arpt Elev	13,302 1497 1536
--------------------------	------------------	------------------------------	------------------------

AL-348 (USAF)

MARCH ARB (KRIV)

RNP APCH

▼ \* When ALS inop increase CAT ABCD RVR to 40, vis to 3/4 mile.  
 \*\* When ALS inop increase CAT ABCD RVR to 60, vis to 1 1/8 miles.

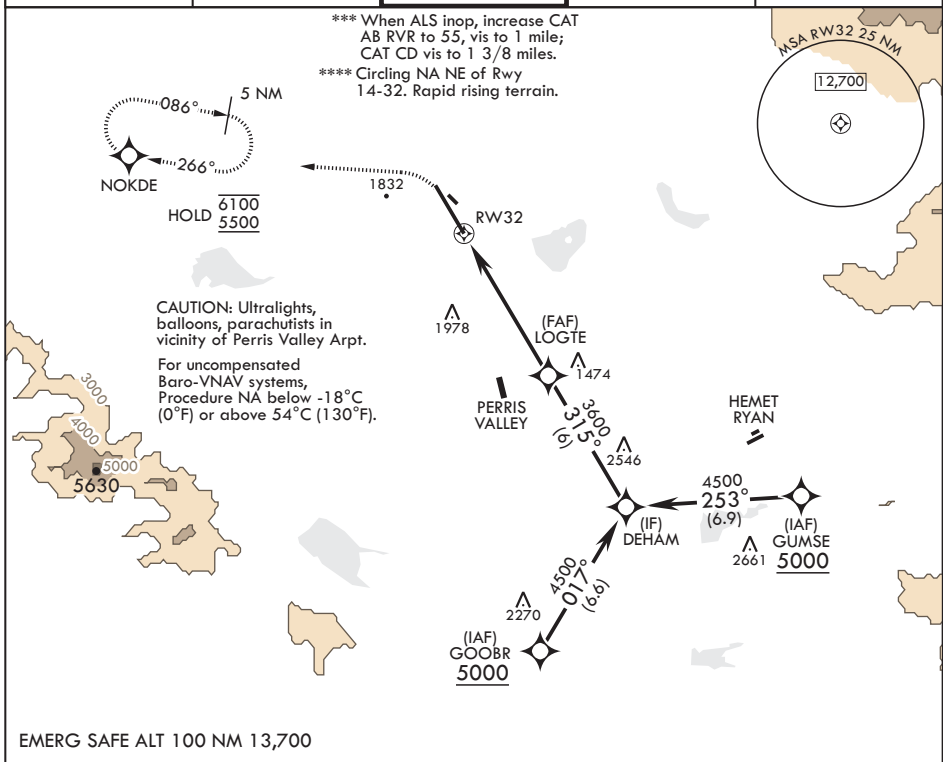
ALSF-1



MISSED APPROACH: Climb to 2100 then climbing left turn to 5500 direct NOKDE and hold, continue climb in hold to 5500.

ATIS 134.75 239.05	APP CON/DEP CON* 133.5 306.975	TOWER 127.65 253.5	GND CON 121.75 335.8	CLNC DEL 127.775 268.7
-----------------------	-----------------------------------	-----------------------	-------------------------	---------------------------

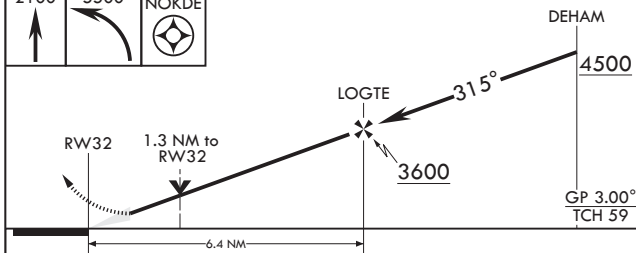
\*\*\* When ALS inop, increase CAT AB RVR to 55, vis to 1 mile; CAT CD vis to 1 3/8 miles.  
 \*\*\*\* Circling NA NE of Rwy 14-32. Rapid rising terrain.



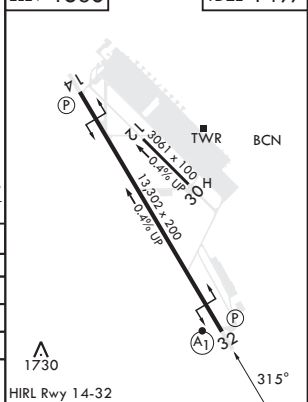
SW-3, 23 JAN 2025 to 20 FEB 2025

SW-3, 23 JAN 2025 to 20 FEB 2025

EMERG SAFE ALT 100 NM 13,700



ELEV 1536 TDZE 1497



CATEGORY	A	B	C	D
LPV DA*	1697/24	200	(200-1/2)	
RNAV/VNAV DA**	1909/40	412	(400-3/4)	
RNAV MDA***	1960/24 463 (500-1/2)	1960/50 463 (500-1)		
☐ CIRCLING****	2180-1 664 (700-1)	2260-1 724 (800-1)	2300-2 764 (800-2/4)	2440-3 904 (1000-3)

RIVERSIDE, CALIFORNIA

33°53'N - 117°16'W

MARCH ARB (KRIV)

Amdt 6 31JAN19

# RNAV (GPS) RWY 32