

ATIS 134.75 239.05  
 CLNC DEL  
 127.775 268.7  
 GND CON  
 121.75 335.8  
 TOWER  
 127.65 253.5  
 DEP CON ★  
 133.5 306.975  
 LOS ANGELES  
 CENTER  
 132.5 284.7

RADAR required TRM transition

Rwy	Knots	60	120	180	240	300	360
*32	V/V(fpm)	231	462	693	924	1155	1386
†14	V/V(fpm)	334	668	1002	1336	1670	2004
†32	V/V(fpm)	309	618	927	1236	1545	1854

Max 310 KIAS  
 until passing  
 DIAMD (JLI  
 transition MAX 310  
 KIAS until passing JLI)

DIAMD  
 N33° 37.85'  
 W117° 17.37'

CAUTION: Parachute activity in vicinity of PDZ VORTAC 26 DME.

OCEANSIDE  
 115.3 OCN  
 Chan 100  
 N33° 14.44'  
 W117° 25.06'

MISSION BAY  
 117.8 MZB  
 Chan 125

PARADISE  
 112.2 PDZ  
 Chan 59

MARCH  
 Chan 77 RIV

CAUTION: Balloon, glider and parachute acft vicinity 136/6 NM, 1 NM off dep crs, and vicinity Perris Valley arpt.

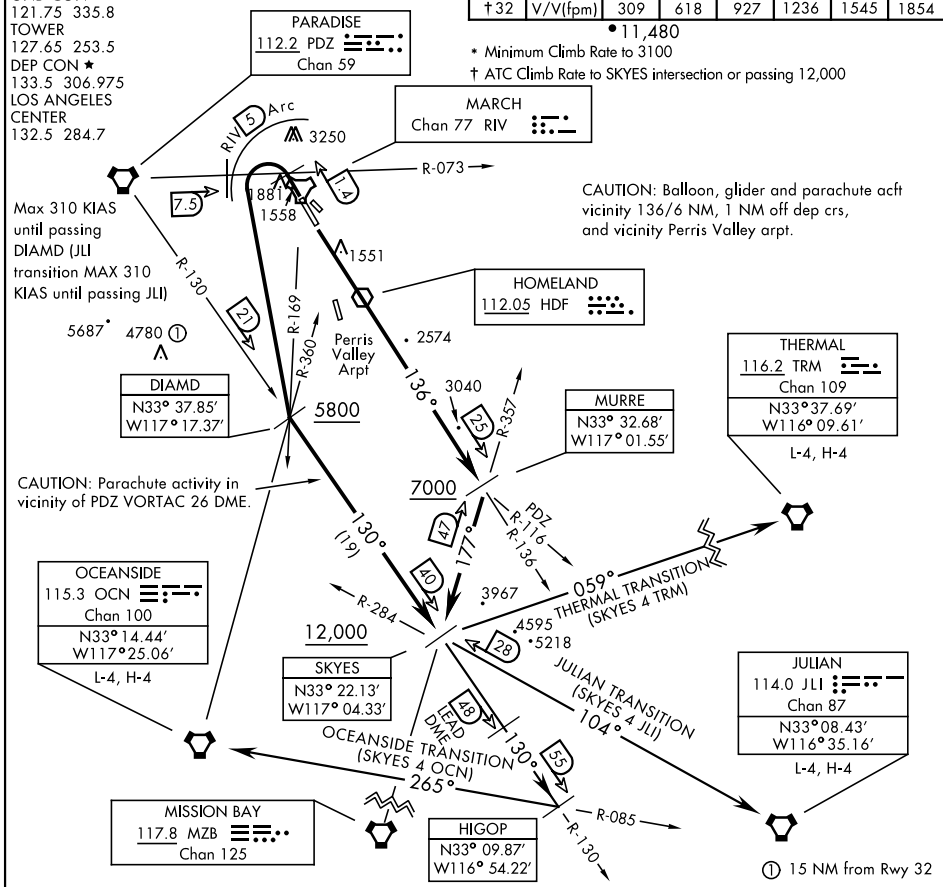
MURRE  
 N33° 32.68'  
 W117° 01.55'

THERMAL  
 116.2 TRM  
 Chan 109  
 N33° 37.69'  
 W116° 09.61'

SKYES  
 N33° 22.13'  
 W117° 04.33'

HIGOP  
 N33° 09.87'  
 W116° 54.22'

JULIAN  
 114.0 JLI  
 Chan 87  
 N33° 08.43'  
 W116° 35.16'



**DEPARTURE ROUTE DESCRIPTION**

**TAKEOFF RWY 14:** Climb via RIV TACAN R-136 or climb direct HDF VOR, then via HDF R-136 to MURRE, intercept MZB VORTAC R-357 to SKYES, cross MURRE at or above 7000, and SKYES at or above 12,000. Thence via transition or assigned route.

**TAKEOFF RWY 32:** Climb on track 315°, then turn left crossing PDZ VORTAC R-073/RIV TACAN 1.4 DME direct DIAMD, proceed no closer than 7.5 DME PDZ. Remain within 5 DME RIV. Cross DIAMD at or above 5800. Intercept PDZ R-130 to SKYES, cross SKYES at or above 12,000. Thence via transition or assigned route.

**JULIAN TRANSITION (SKYES 4 JLI):** From over SKYES via JLI VORTAC R-284 direct JLI. MAX 310 KIAS until passing JULIAN VORTAC.

**OCEANSIDE TRANSITION (SKYES 4 OCN):** From over SKYES via PDZ VORTAC R-130 direct HIGOP, intercept OCN VORTAC R-085 direct OCN.

**THERMAL TRANSITION (SKYES 4 TRM):** From over SKYES track 059° to TRM. (Radar required)

SW-3, 23 JAN 2025 to 20 FEB 2025

SW-3, 23 JAN 2025 to 20 FEB 2025