

LOC I-MCU <b>110.7</b>	APP CRS <b>044°</b>	Rwy ldg TDZE Apt Elev	<b>8001</b> <b>535</b> <b>559</b>
---------------------------	------------------------	-----------------------------	---

# ILS or LOC RWY 4

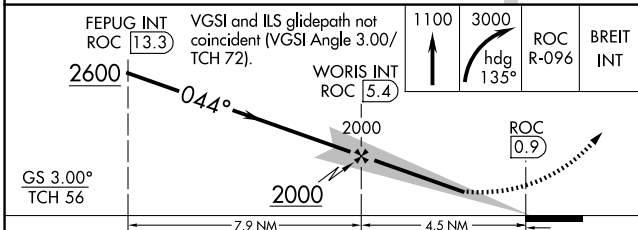
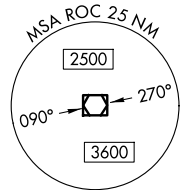
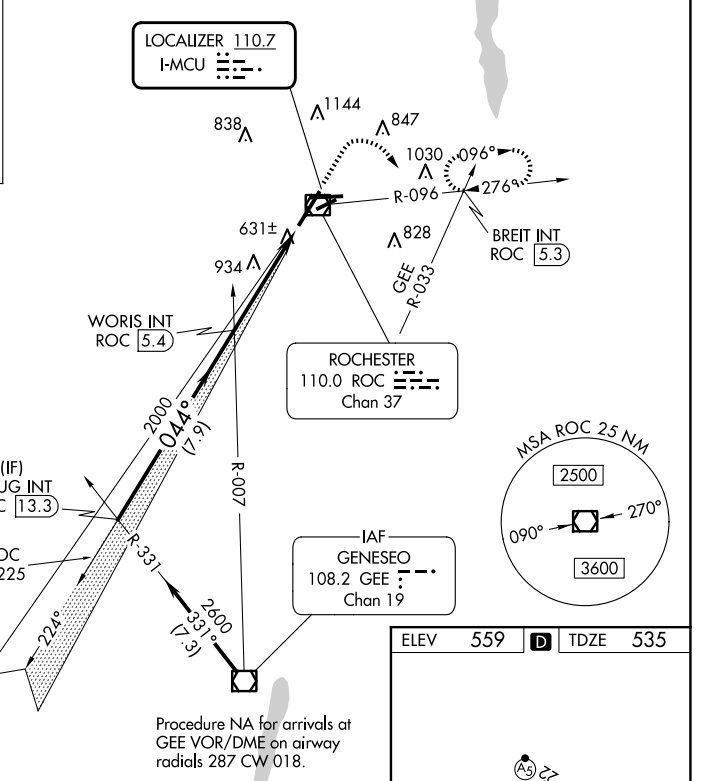
FREDERICK DOUGLASS/GREATER ROCHESTER INTL (ROC)

	ALSF-2	MISSED APPROACH: Climb to 1100 then climbing right turn to 3000 on heading 135° and ROC VOR/DME R-096 to BREIT INT/ROC 5.3 DME and hold, continue climb-in-hold to 3000.

ATIS <b>124.825</b>	ROCHESTER APP CON <b>119.55 269.6</b>	ROCHESTER TOWER <b>118.3 254.3</b>	GND CON <b>121.7</b>	CLNC DEL <b>118.8 343.65</b>
------------------------	--	---------------------------------------	-------------------------	---------------------------------

ALTERNATE MISSED APCH FIX

GENESECO  
GEE  
108.2  
Chan 19



ELEV	559	TDZE	535
------	-----	------	-----

CATEGORY	A	B	C	D
S-ILS 4	735/18		200 (200-½)	
S-LOC 4	920/24	385 (400-½)	920/35	385 (400-¾)
CIRCLING	1060-1 501 (600-1)		1500-2¾ 941 (1000-2¾)	1500-3 941 (1000-3)

Knots	60	90	120	150	180
Min:Sec	4:30	3:00	2:15	1:48	1:30

# ILS or LOC RWY 4

NE-2, 23 JAN 2025 to 20 FEB 2025

NE-2, 23 JAN 2025 to 20 FEB 2025