

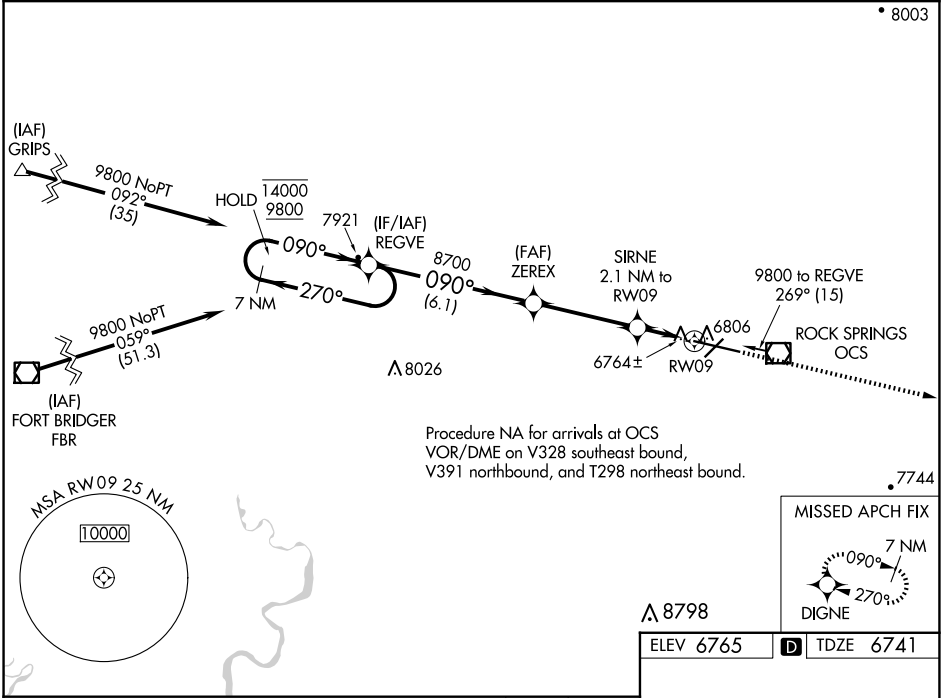
WAAS CH <b>66016</b> <b>W09A</b>	APP CRS <b>090°</b>	Rwy Idg <b>10000</b> TDZE <b>6741</b> Apt Elev <b>6765</b>
--	------------------------	--

# RNAV (GPS) RWY 9

SOUTHWEST WYOMING RGNL (R.K.S)

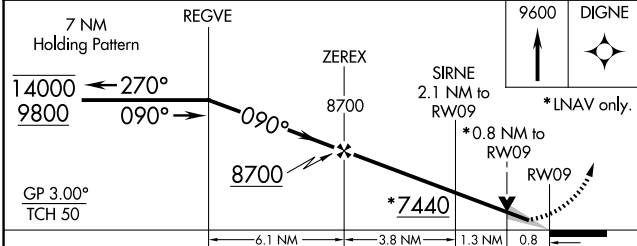
RNP APCH.	ODALS	MISSED APPROACH: Climb to 9600 direct DIGNE and hold.
<p>▼ For uncompensated Baro-VNAV systems, LNAV/VNAV NA below -28°C or above 45°C.</p> <p>▲</p>		

ASOS <b>118.375</b>	SALT LAKE CENTER <b>124.35 353.5</b>	UNICOM <b>122.8 (CTAF) 0</b>
------------------------	---	---------------------------------

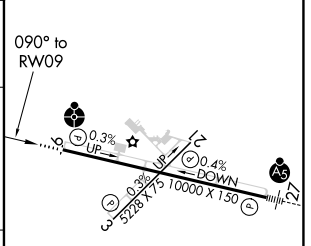


NW-1, 23 JAN 2025 to 20 FEB 2025

NW-1, 23 JAN 2025 to 20 FEB 2025



ELEV 6765	TDZE 6741
-----------	-----------



CATEGORY	A	B	C	D
LPV DA	6941-3/4 200 (200-3/4)			
LNAV/VNAV DA	7034-3/4 293 (300-3/4)			
LNAV MDA	7040-3/4 299 (300-3/4)		7040-1 299 (300-1)	
CIRCLING	7140-1 375 (400-1)	7220-1 455 (500-1)	7220-1 1/2 455 (500-1 1/2)	7540-2 1/2 775 (800-2 1/2)

MIRL Rwy 3-21  
HIRL Rwy 9-27 0  
REIL Rws 3 and 21 0