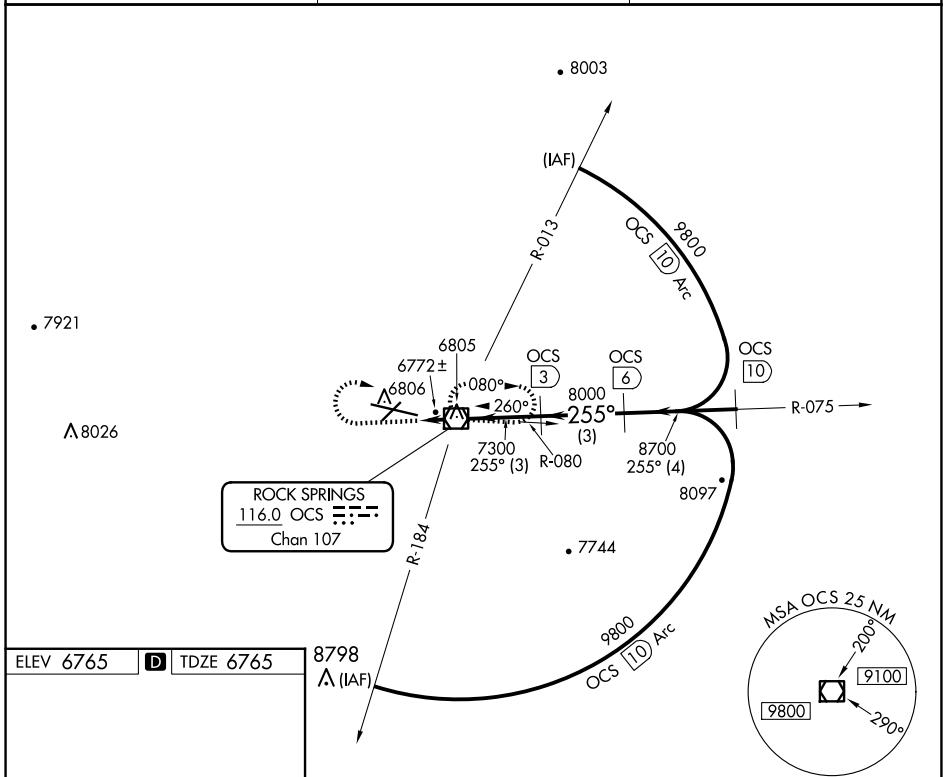


VOR/DME OCS 116.0 Chan 107	APP CRS 255°	Rwy Idg TDZE Apt Elev	10000 6765 6765
--	------------------------	-----------------------------	--

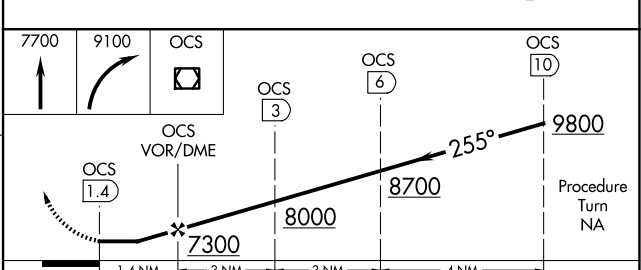
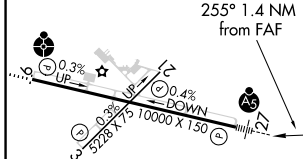
VOR/DME RWY 27

SOUTHWEST WYOMING RGNL (R.K.S)

Inoperative table does not apply to Cat D.		MALSR	MISSED APPROACH: Climb to 7700, then climbing right turn to 9100 direct OCS VOR/DME and hold.
ASOS 118.375	SALT LAKE CENTER 124.35 353.5	UNICOM 122.8 (CTAF) 1	



ELEV 6765	D	TDZE 6765
-----------	----------	-----------



CATEGORY	A	B	C	D
S-27	7040-½ 275 (300-½)			7040-1 275 (300-1)
C CIRCLING	7140-1 375 (400-1)	7220-1 455 (500-1)	7220-1½ 455 (500-1½)	NA

MIRL Rwy 3-21
HIRL Rwy 9-27 **1**
REIL Rwy 3 and 21 **1**

NW-1, 23 JAN 2025 to 20 FEB 2025

NW-1, 23 JAN 2025 to 20 FEB 2025