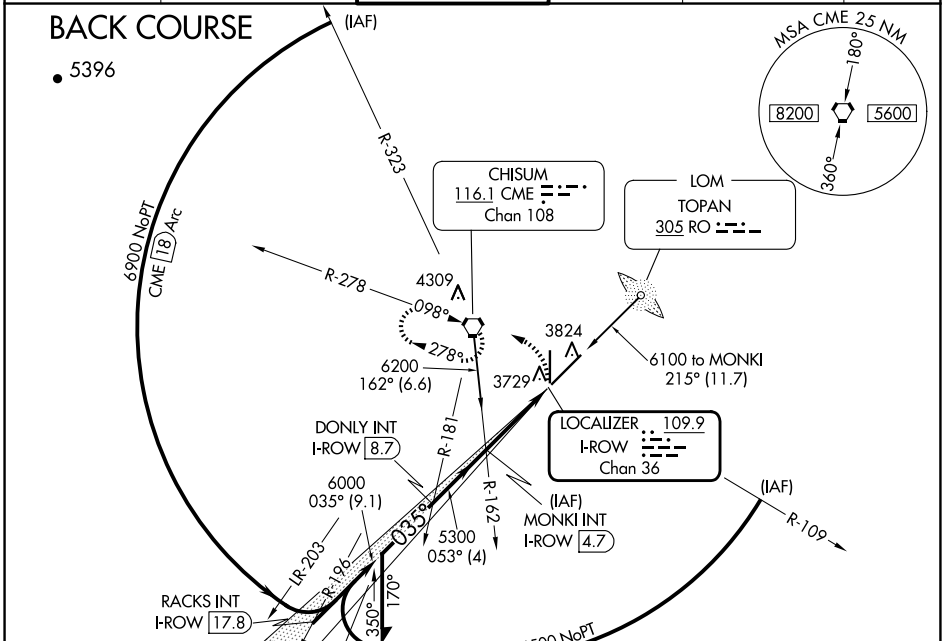


LOC/DME I-ROW <b>109.9</b> Chan <b>36</b>	APP CRS <b>035°</b>	Rwy Idg <b>13000</b> TDZE <b>3667</b> Apt Elev <b>3671</b>
---	------------------------	--

**LOC BC RWY 3**  
ROSWELL AIR CENTER (ROW)

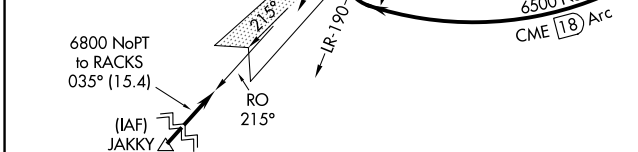
		MISSED APPROACH: Climbing left turn to 6000 direct CME VORTAC and hold.			
--	--	---	--	--	--

ATIS <b>128.45 306.2</b>	ROSWELL APP CON * <b>119.6 239.0</b>	ROSWELL TOWER * <b>118.5 (CTAF) 233.7</b>	GND CON <b>121.9 348.6</b>	CLNC DEL <b>132.875 282.25</b>	UNICOM <b>122.95</b>
-----------------------------	---	--	-------------------------------	-----------------------------------	-------------------------



SW-1, 23 JAN 2025 to 20 FEB 2025

SW-1, 23 JAN 2025 to 20 FEB 2025



Use I-ROW DME when on localizer course.

Remain within 10 NM

MONKI INT I-ROW **4.7**

DONLY INT I-ROW **8.7**

Disregard glide slope indications.

6000 CME

5300

3.00° TCH 50

CATEGORY	A	B	C	D
S-3	4100-1 433 (500-1)	4100-1¼ 433 (500-1¼)	4100-1½ 433 (500-1½)	4100-1¾ 433 (500-1¾)
CIRCLING	4140-1 469 (500-1)	4140-1½ 469 (500-1½)	4300-2 629 (700-2)	

ELEV 3671	TDZE 3667
-----------	-----------

MIRL Rwy 3-21  
MIRL Rwy 17-35

FAF to MAP 4.2 NM

Knots	60	90	120	150	180
Min:Sec	4:12	2:48	2:06	1:41	1:24