

RNAV (GPS) RWY 21


ROSWELL AIR CENTER (ROW)

| | | |
|--|------------------------|--|
| WAAS CH 69302 W21A | APP CRS 215° | Rwy Idg 13000 TDZE 3633 Apt Elev 3671 |
|--|------------------------|--|

RNP APCH-GPS.

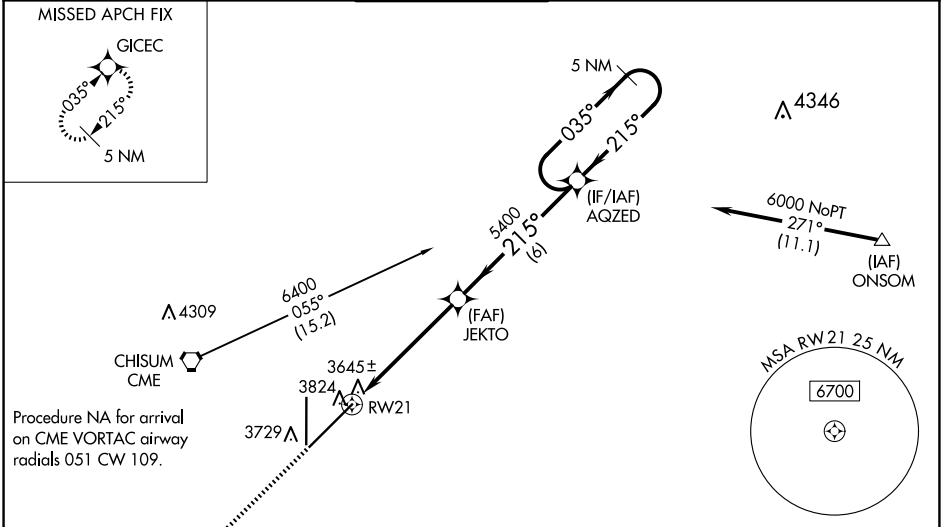
ASR For uncompensated Baro-VNAV systems, LNAV/VNAV NA below -22°C or above 41°C. When local altimeter setting not received, use Artesia altimeter setting: increase LPV DA to 3979 feet and all visibilities 1/8 SM; increase LNAV/VNAV DA to 4075 feet and all visibilities 1/4 SM; increase all MDAs 80 feet and LNAV Cat C/D visibility 1/8 SM and Circling Cat D visibility 1/4 SM. Baro-VNAV and VDP NA when using Artesia altimeter setting. For inop ALS, increase LPV all Cats visibility to 3/8 SM, and LNAV/VNAV all Cats visibility to 1 SM. For inop ALS when using Artesia altimeter setting, increase LPV all Cats visibility to 1 SM and LNAV/VNAV all Cats visibility to 1 1/8 SM.

MALSRL



MISSED APPROACH:
Climb to 6300 direct GICEC and hold.

| | | | | | |
|-----------------------------|---|---|-------------------------------|-----------------------------------|-------------------------|
| ATIS 128.45 306.2 | ROSWELL APP CON * 119.6 239.0 | ROSWELL TOWER * 118.5(CTAF) 233.7 | GND CON 121.9 348.6 | CLNC DEL 132.875 282.25 | UNICOM 122.95 |
|-----------------------------|---|---|-------------------------------|-----------------------------------|-------------------------|



| CATEGORY | A | B | C | D |
|--------------|----------------------------|---|---|---|
| LPV DA | 3899-1/2 | | 266 (300-1/2) | |
| LNAV/VNAV DA | 3995-5/8 | | 362 (400-3/8) | |
| LNAV MDA | 4080-1/2 447 (500-1/2) | | 4080-7/8 447 (500-7/8) | |
| CIRCLING | 4140-1 1/4 469 (500-1 1/4) | | 4140-1 1/2 469 (500-1 1/2) 4300-2 629 (700-2) | |

ELEV 3671 **D** TDZE 3633

SW-1, 23 JAN 2025 to 20 FEB 2025

SW-1, 23 JAN 2025 to 20 FEB 2025