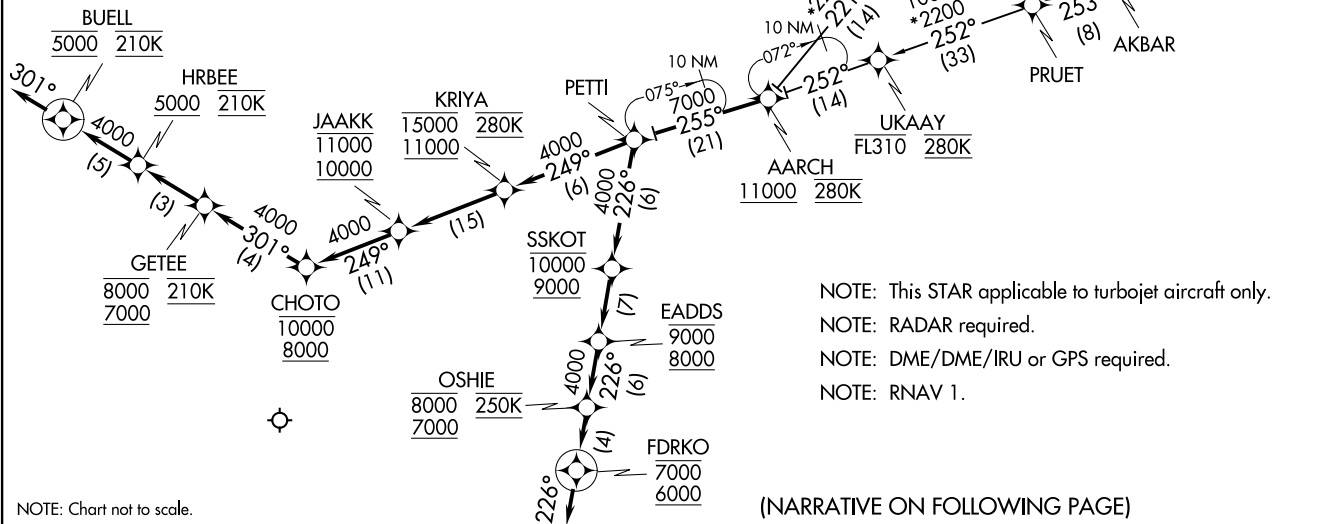


AARCH TWO ARRIVAL (RNAV)
(AARCH,AARCH2) 17AUG17

ST. LOUIS APP CON
132.125 360.6
D-ATIS
125.025 379.925



NOTE: Chart not to scale.

JARKE
VERTICAL NAVIGATION
PLANNING INFORMATION
TURBOJETS: Expect FL280

- NOTE: This STAR applicable to turbojet aircraft only.
- NOTE: RADAR required.
- NOTE: DME/DME/IRU or GPS required.
- NOTE: RNAV 1.

(NARRATIVE ON FOLLOWING PAGE)

ST. LOUIS, MISSOURI
ST. LOUIS LAMBERT INTL (STL)

(AARCH,AARCH2) 1722Z
AARCH TWO ARRIVAL (RNAV)

AL-360 (FAA)

ST. LOUIS LAMBERT INTL (STL)
ST. LOUIS, MISSOURI

ARRIVAL ROUTE DESCRIPTION

AKBAR TRANSITION (AKBAR.AARCH2)

BRICKYARD TRANSITION (VHP.AARCH2)

ROBERTS TRANSITION (RBS.AARCH2)

From AARCH on track 255° to PETTI.

LANDING RUNWAYS 11/12L/R: From PETTI on track 249° to cross KRIYA at or above 11000 and at or below 15000 and at 280K, then on track 249° to cross JAAKK at or above 10000 and at or below 11000, then on track 249° to cross CHOTO at or above 8000 and at or below 10000, then on track 301° to cross GETEE at or above 7000 and at or below 8000 and at 210K, then on track 301° to cross HRBEE at or above 5000 and at 210K, then on track 301° to cross BUELL at 5000 and at 210K. Expect RADAR vectors to final approach course. If not received by BUELL, track via 301°.

LANDING RUNWAYS 29/30L/R: From PETTI on track 226° to cross SSKOT at or above 9000 and at or below 10000, then on track 226° to cross EADDS at or above 8000 and at or below 9000, then on track 226° to cross OSHIE at or above 7000 and at or below 8000, then on track 226° to cross FDRKO at or above 6000 and at or below 7000, then via assigned instrument approach procedure. If approach clearance not received by FDRKO, track via 226°, expect RADAR vectors to final approach course.

NC-3, 23 JAN 2025 to 20 FEB 2025

NC-3, 23 JAN 2025 to 20 FEB 2025