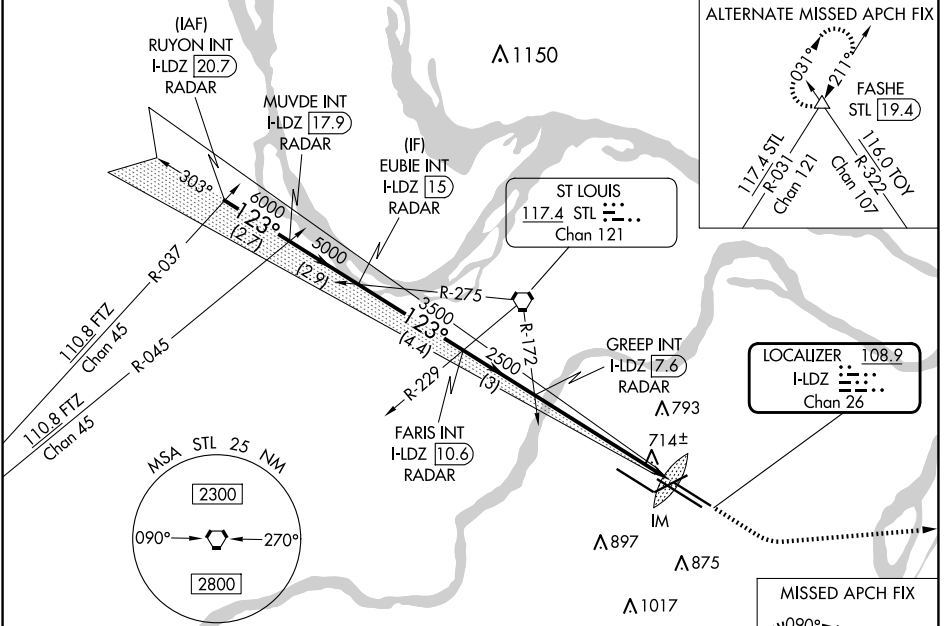


LOC/DME I-LDZ 108.9 Chan 26	APP CRS 123°	Rwy Idg TDZE Apt Elev	8956 541 618
--	------------------------	-----------------------------	---

ILS RWY 12L (CAT II & III)

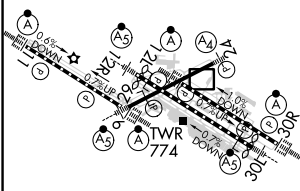
ST LOUIS LAMBERT INTL (STL)

Disregard OM indications. Simultaneous approach authorized with Rwy 11.		ALSF-2 	MISSED APPROACH: Climb to 2500 then climbing left turn to 3000 direct TOY VORTAC and hold.		
D-ATIS 125.025 379.925	ST. LOUIS APP CON 132.125 360.6	ST. LOUIS TOWER 120.05 284.6	GND CON 121.9 348.6 (Inbound) 121.65 377.175 (Outbound) 118.925 227.125 (Rwy 11/29)	CLNC DEL 119.5 363.1	CPDLC



ELEV 618	D	TDZE 541
----------	----------	----------

Rwy 6-24 7603 X 150
 Rwy 11-29 9000 X 150
 Rwy 12L-30R 9013 X 150
 Rwy 12R-30L 11020 X 150



RUYON INT I-LDZ 20.7 RADAR MUVDE INT I-LDZ 17.9 RADAR EUBIE INT I-LDZ 15 RADAR FARIS INT I-LDZ 10.6 RADAR GREEP INT I-LDZ 7.6 RADAR	2500 	3000 	TOY
--	----------	----------	---------

CATEGORY	A	B	C	D
S-ILS 12L	CAT II RA 112/12 100 DA 641			
S-ILS 12L	CAT III RVR 06			

CATEGORY II & III ILS - SPECIAL AIRCREW & AIRCRAFT CERTIFICATION REQUIRED

NC-3, 23 JAN 2025 to 20 FEB 2025

NC-3, 23 JAN 2025 to 20 FEB 2025