

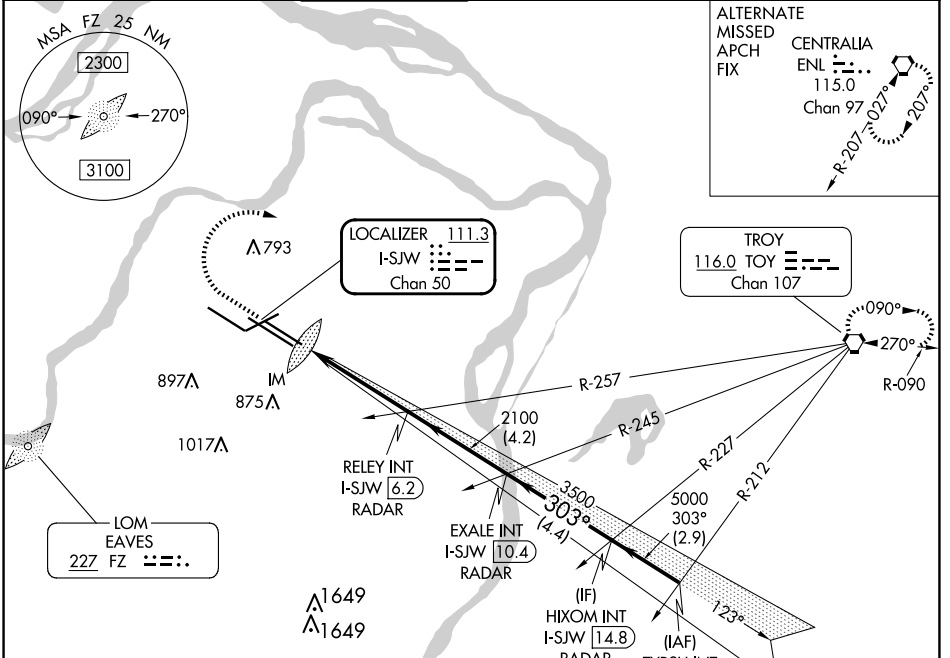
LOC/DME I-SJW 111.3 Chan 50	APP CRS 303°	Rwy Idg TDZE Apt Elev 9013 605 618
---	------------------------	--

ILS RWY 30R (CAT II & III)

ST LOUIS LAMBERT INTL (STL)

RADAR required for procedure entry.		ALSF-2 	MISSED APPROACH: Climb to 1020 then climbing right turn to 3000 direct TOY VORTAC and hold.
Simultaneous approach authorized with Rwy 29.			

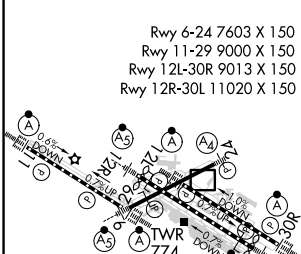
D-ATIS 125.025 379.925	ST. LOUIS APP CON 132.125 360.6	ST. LOUIS TOWER 120.05 284.6	GND CON 121.9 348.6 (Inbound) 121.65 377.175 (Outbound) 118.925 227.125 (Rwy 11/29)	CLNC DEL 119.5 363.1	CPDLC
--	---	--	---	--------------------------------	-------



NC-3, 23 JAN 2025 to 20 FEB 2025

NC-3, 23 JAN 2025 to 20 FEB 2025

ELEV 618	D	TDZE 605
----------	----------	----------



Rwy 6-24 7603 X 150	Rwy 11-29 9000 X 150	Rwy 12L-30R 9013 X 150	Rwy 12R-30L 11020 X 150
---------------------	----------------------	------------------------	-------------------------

CATEGORY A B C D S-ILS 30R CAT II RA 116/12 100 DA 705 S-ILS 30R CAT III RVR 06
--

1020	3000	TOY	RELEY INT I-SJW 6.2 RADAR	EXALE INT I-SJW 10.4 RADAR	HIXOM INT I-SJW 14.8 RADAR	TYRSH INT I-SJW 17.7 RADAR
CATEGORY II & III ILS - SPECIAL AIRCREW & AIRCRAFT CERTIFICATION REQUIRED						

HIRL all Rwys
TDZ/CL Rwys 11, 12L, 12R, 29, and 30R