

LOC/DME I-OGZ 111.95 Chan 56(Y)	APP CRS 123°	Rwy Idg TDZE Apt Elev	9000 618 618
----------------------------------------------	------------------------	-----------------------------	-----------------------------------------

ILS or LOC RWY 11

ST LOUIS LAMBERT INTL (STL)

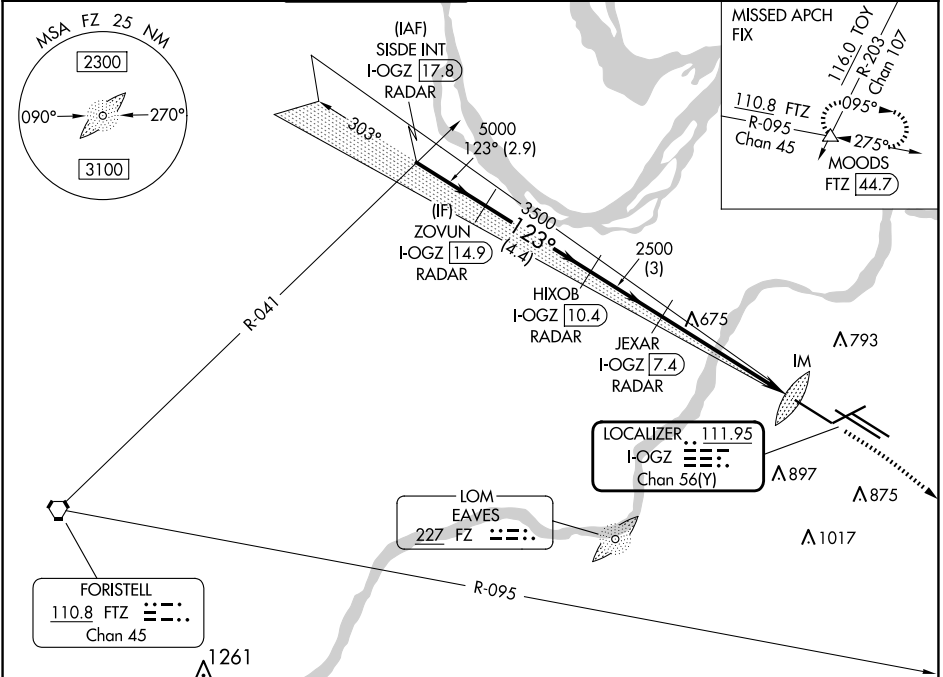
RADAR required for procedure entry. DME or RADAR required.

Simultaneous approach authorized with Rwy 12R/L. Disregard OM signal associated with ILS to Rwy 12R. For inop ALS, increase S-ILS Cat E visibility to RVR 4000, and S-LOC Cat C/D/E visibility to RVR 5500.

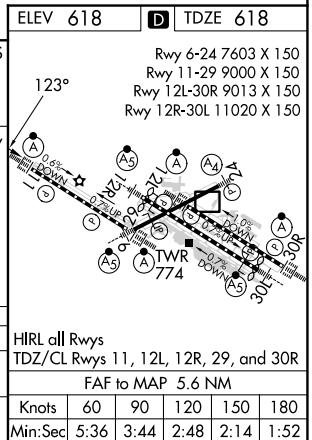


MISSED APPROACH: Climb to 1060 then climbing right turn to 3000 on heading 130° and FTZ R-095 to MOODS INT/FTZ 44.7 DME and hold.

D-ATIS 125.025 379.925	ST. LOUIS APP CON 132.125 360.6	ST. LOUIS TOWER 132.475 239.275	GND CON 121.9 348.6 (Inbound) 121.65 377.175 (Outbound) 118.925 227.125 (Rwy 11/29)	CLNC DEL 119.5 363.1	CPDLC
--------------------------------------------	-------------------------------------------	-------------------------------------------	-------------------------------------------------------------------------------------------------------------------	--------------------------------	-------



VGSIs and ILS glidepath not coincident (VGS Angle 3.00/TCH 67).					1060	3000	FTZ R-095	MOODS
SISDE INT I-OGZ 17.8	ZOVUN I-OGZ 14.9	HIXOB I-OGZ 10.4	JEXAR I-OGZ 7.4	* I-OGZ 2.7	I-OGZ 1.8	*LOC only		
5000	5000	3500	2500	2500	1060	IM		
GS 3.00° TCH 55		2.9 NM		4.4 NM	3 NM	4.6 NM	0.9 NM	0.1
CATEGORY	A	B	C	D	E			
S-ILS 11	818/18		200 (200-½)					
S-LOC 11	980/24 362 (400-½)		980/35 362 (400-¾)					



NC-3, 23 JAN 2025 to 20 FEB 2025

NC-3, 23 JAN 2025 to 20 FEB 2025