

LOC/DME I-LMR	APP CRS	Rwy Idg	12R	12L
109.7	123°		10553	8956
Chan 34		TDZE	540	541
		Apt Elev	618	618

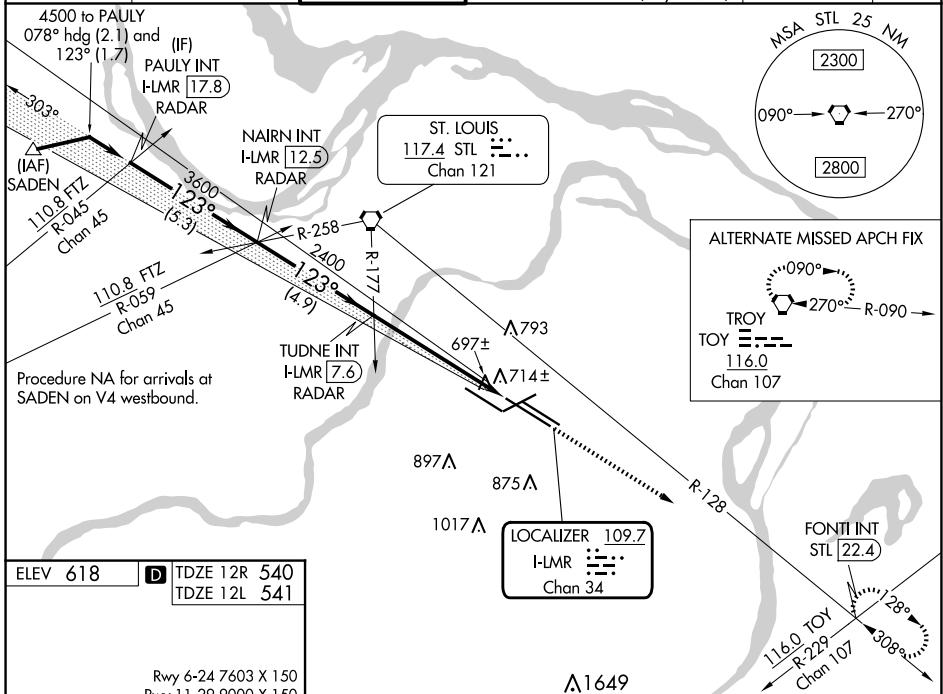
ILS or LOC RWY 12R

ST LOUIS LAMBERT INTL (STL)

▼ LOC only: Rwy 12R helicopter visibility reduction below 3/4 SM NA. Inop table does not apply to sidestep Rwy 12L. For inop ALS, increase S-ILS 12R Cat E visibility to RVR 4000 and increase S-LOC 12R Cats A/B visibility to RVR 5500, Cats C/D/E visibility to RVR 6000. Simultaneous approach authorized with Rwy 11. Simultaneous approach authorized with Rwy 12L requires use of vertical guidance; maintain last assigned altitude until established on glide slope.

MALSR Rwy 12R	ALS-F2 Rwy 12L	MISSED APPROACH: Climb to 5000 on STL VORTAC R-128 to FONTI INT/STL 22.4 DME and hold, continue climb-in-hold to 5000.
---------------	----------------	--

D-ATIS	ST. LOUIS APP CON	ST. LOUIS TOWER	GND CON	CLNC DEL	CPDLC
125.025	132.125 360.6	118.5 257.7	121.9 348.6 (Inbound)	119.5 363.1	
379.925			121.65 377.175 (Outbound)		
			118.925 227.125 (Rwy 11/29)		



ELEV 618	TDZE 12R 540
	TDZE 12L 541

Rwy 6-24 7603 X 150
Rwy 11-29 9000 X 150
Rwy 12L-30R 9013 X 150
Rwy 12R-30L 11020 X 150

123°

HIRL all Rwy

TDZ/CL Rwy 11, 12L, 12R, 29, and 30R

FAF to MAP 5.7 NM

Knots	60	90	120	150	180
Min:Sec	5:42	3:48	2:51	2:17	1:54

PAULY INT I-LMR 17.8 RADAR	NAIRN INT I-LMR 12.5 RADAR	TUDNE INT I-LMR 7.6 RADAR	FONTI INT		
4500	3600	2400	5000		
GS 3.00° TCH 54	3600	2400	STL R-128		
	5.3 NM	4.9 NM	4.6 NM		
			1.2 NM		
CATEGORY	A	B	C	D	E
S-ILS 12R	740/18 200 (200-1/2)				
S-LOC 12R	960/40 420 (400-3/4)				
SIDESTEP 12L	980-1 439 (400-1)	980-1/2 439 (400-1/2)	980-2 439 (400-2)		

NC-3, 23 JAN 2025 to 20 FEB 2025

NC-3, 23 JAN 2025 to 20 FEB 2025