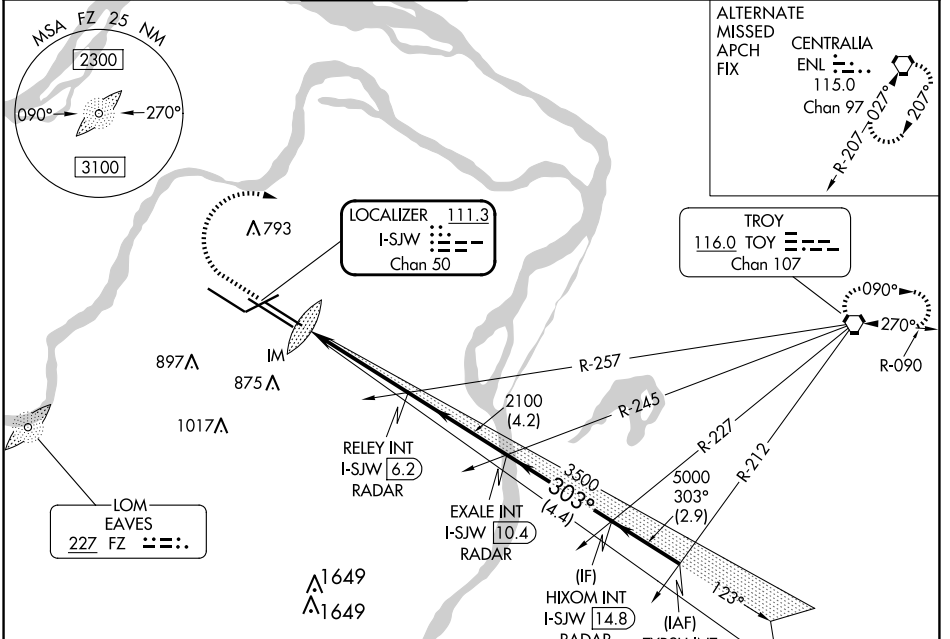


LOC/DME I-SJW <b>111.3</b> Chan <b>50</b>	APP CRS <b>303°</b>	Rwy Idg TDZE Apt Elev	<b>9013</b> <b>605</b> <b>618</b>
-------------------------------------------------	------------------------	-----------------------------	-----------------------------------------

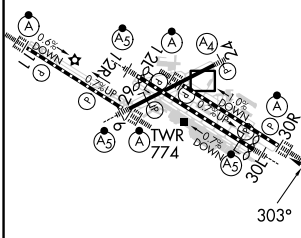
# ILS or LOC RWY 30R

ST LOUIS LAMBERT INTL (STL)

RADAR required for procedure entry.		ALSF-2		MISSED APPROACH: Climb to 1020 then climbing right turn to 3000 direct TOY VORTAC and hold.	
▼ For inop ALS, increase S-ILS 30R Cat E visibility to RVR 4000 and S-LOC 30R Cat C/D/E visibility to 1 $\frac{3}{8}$ SM. Simultaneous approach authorized with Rwy 29. Simultaneous approach authorized with Rwy 30L requires use of vertical guidance; maintain last assigned altitude until established on glideslope.		(A)			
D-ATIS <b>125.025</b> <b>379.925</b>	ST. LOUIS APP CON <b>132.125 360.6</b>	ST. LOUIS TOWER <b>120.05 284.6</b>	GND CON <b>121.9 348.6</b> (Inbound) <b>121.65 377.175</b> (Outbound) <b>118.925 227.125</b> (Rwy 11/29)		CLNC DEL <b>119.5 363.1</b>
			CPDLC		



ELEV 618	<b>D</b> TDZE 605
Rwy 6-24 7603 X 150	
Rwy 11-29 9000 X 150	
Rwy 12L-30R 9013 X 150	
Rwy 12R-30L 11020 X 150	



HIRL all Rwys					
TDZ/CL Rwys 11, 12L, 12R, 29, and 30R					
FAF to MAP 4.5 NM					
Knots	60	90	120	150	180
Min:Sec	4:30	3:00	2:15	1:48	1:30

1020	3000	TOY	RELEY INT I-SJW 6.2 RADAR	EXALE INT I-SJW 10.4 RADAR	HIXOM INT I-SJW 14.8 RADAR	TYRSH INT I-SJW 17.7 RADAR
*LOC only						
I-SJW 1.7	I-SJW 3	2100	3500	5000	303°	5000
GS 3.00% TCH 57						
CATEGORY						
S-ILS 30R	A		B		C	
			805/18 200 (200- $\frac{1}{2}$ )			
S-LOC 30R	A		B		C	
			1080/24 475 (500- $\frac{1}{2}$ ) 1080/50 475 (500-1)			