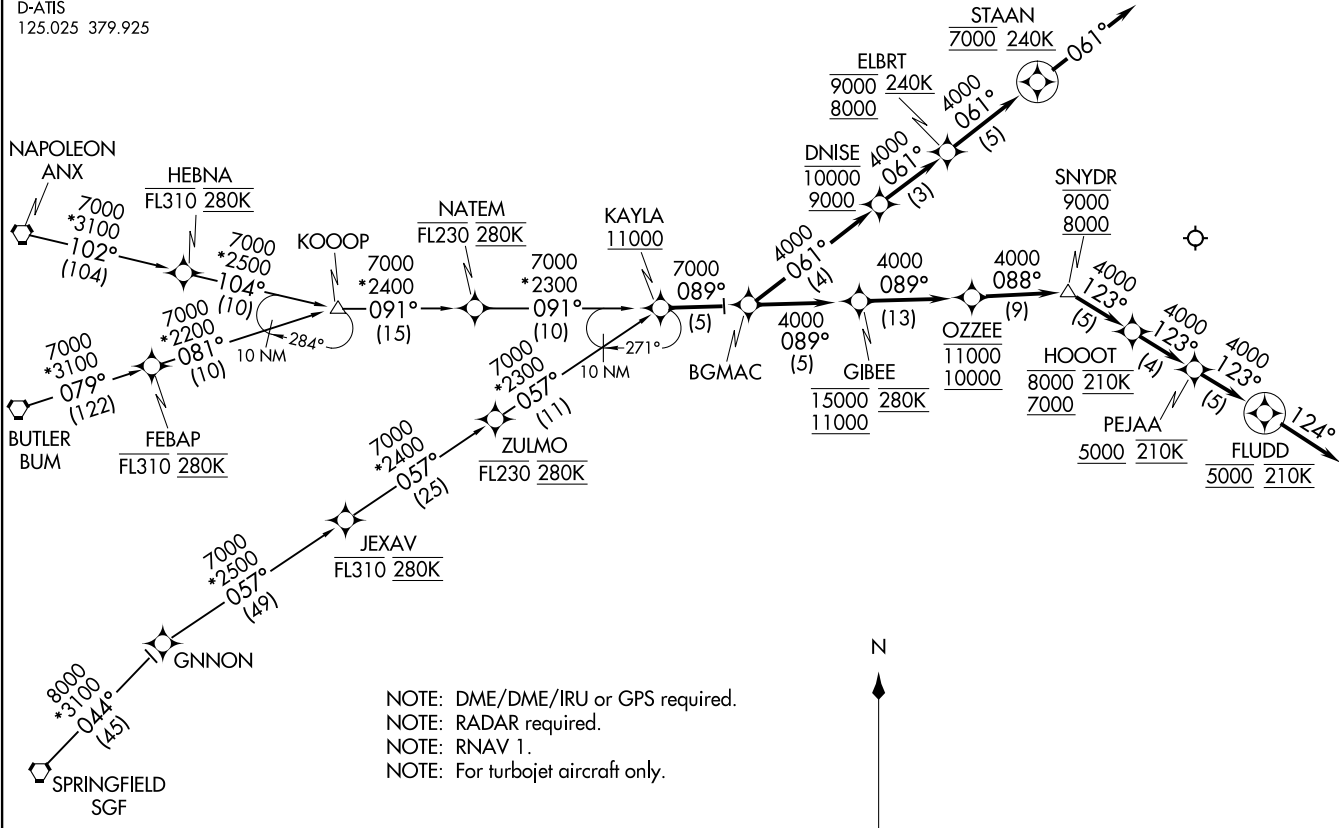


KAYLA THREE ARRIVAL (RNAV)  
(KAYLA.KAYLA3) 1200CT7

ST LOUIS APP CON  
132.125 360.6  
D-ATIS  
125.025 379.925



NOTE: DME/DME/IRU or GPS required.  
 NOTE: RADAR required.  
 NOTE: RNAV 1.  
 NOTE: For turbojet aircraft only.

(NARRATIVE ON FOLLOWING PAGE)

NOTE: Chart not to scale.

ST LOUIS, MISSOURI  
ST LOUIS LAMBERT INTL (STL)

(KAYLA.KAYLA3) 18312  
KAYLA THREE ARRIVAL (RNAV)  
A1-360 (FAA)

ST LOUIS LAMBERT INTL (STL)  
ST LOUIS, MISSOURI

ARRIVAL ROUTE DESCRIPTION

BUTLER TRANSITION (BUM.KAYLA3)

KOOOP TRANSITION (KOOOP.KAYLA3)

NAPOLEON TRANSITION (ANX.KAYLA3)

SPRINGFIELD TRANSITION (SGF.KAYLA3)

From KAYLA on track 089° to BGMAC. Thence. . . .

LANDING RUNWAYS 11/12L/R: From BGMAC on track 061° to cross DNISE at or above 9000 or at or below 10000, then on track 061° to cross ELBRT at or above 8000 and at or below 9000 and at or above 240K, then on track 061° to cross STAAN at 7000 and at or above 240K, then on assigned approach procedure. If approach clearance not received by STAAN, then on track 061°, expect RADAR vectors to final approach course.

LANDING RUNWAYS 29/30L/R: From BGMAC on track 089° to cross GIBEE at or above 11000 and at or below 15000 and at 280K, then on track 089° to cross OZZEE at or above 10000 and at or below 11000, then on track 088° to cross SNYDR at or above 8000 and at or below 9000, then on track 123° to cross HOOOT at or above 7000 and at or below 8000 and at 210K, then on track 123° to cross PEJAA at or above 5000 and at 210K, then on track 123° to cross FLUDD at 5000 and at 210K. If approach clearance not received by FLUDD, then on track 124°, expect RADAR vectors to final approach course.

NC-3, 23 JAN 2025 to 20 FEB 2025

NC-3, 23 JAN 2025 to 20 FEB 2025