

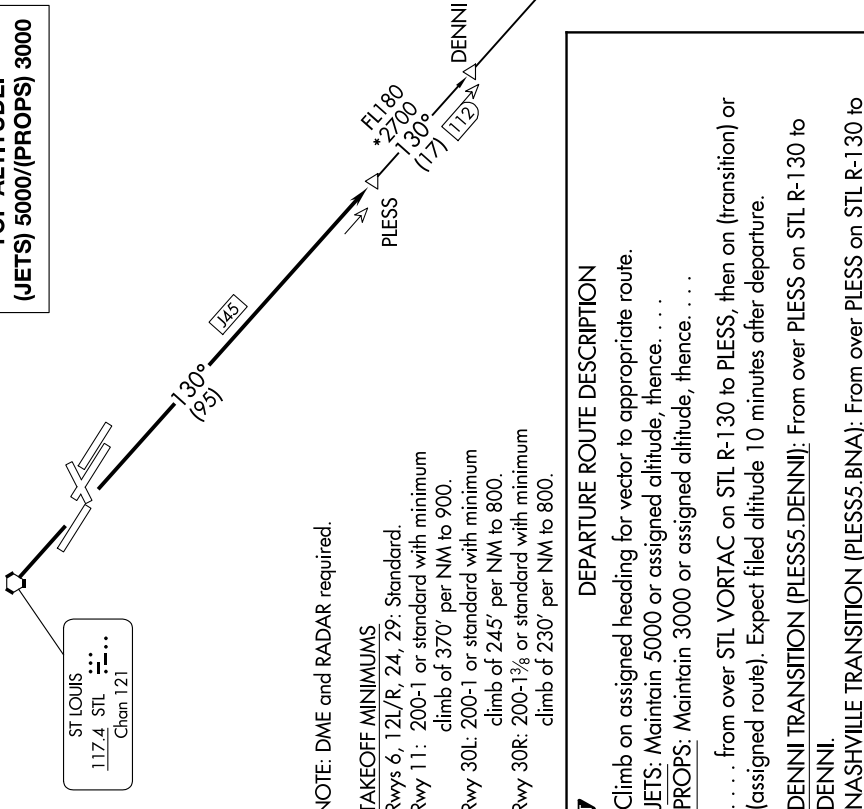
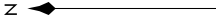
PLESS FIVE DEPARTURE

AL-360 (FAA)

NC-3, 23 JAN 2025 to 20 FEB 2025

**TOP ALTITUDE:
(JETS) 5000/(PROPS) 3000**

D-AITS 125.025 379.925
 CLNC DEL 119.5 363.1
 CPDIC
 GND CON 121.9 348.6 (Inbound)
 121.65 377.175 (Outbound)
 118.925 227.125 (Rwy 11/29)
 ST LOUIS TOWER 120.05 284.6 (Rwys 12L/30R, 24)
 118.5 257.7 (Rwy 12R/30L)
 132.475 239.275 (Rwys 6, 11/29)
 ST. LOUIS DEP CON 128.1 307.05



NOTE: DME and RADAR required.

TAKEOFF MINIMUMS

- Rwys 6, 12L/R, 24, 29: Standard.
- Rwy 11: 200-1 or standard with minimum climb of 370' per NM to 900.
- Rwy 30L: 200-1 or standard with minimum climb of 245' per NM to 800.
- Rwy 30R: 200-1½ or standard with minimum climb of 230' per NM to 800.

DEPARTURE ROUTE DESCRIPTION

Climb on assigned heading for vector to appropriate route.
JETS: Maintain 5000 or assigned altitude, thence. . . .
PROPS: Maintain 3000 or assigned altitude, thence. . . .
 from over STL VORTAC on STL R-130 to PLESS, then on (transition) or (assigned route). Expect filed altitude 10 minutes after departure.
DENN1 TRANSITION (PLESS5.DENN1): From over PLESS on STL R-130 to DENN1.
NASHVILLE TRANSITION (PLESS5.BNA): From over PLESS on STL R-130 to DENN1, then on STL R-130 and BNA R-315 to BNA VORTAC.

NOTE: Chart not to scale.

NC-3, 23 JAN 2025 to 20 FEB 2025