

|             |          |             |
|-------------|----------|-------------|
| APP CRS     | Rwy Idg  | <b>9000</b> |
| <b>123°</b> | TDZE     | <b>618</b>  |
|             | Apt Elev | <b>618</b>  |

# RNAV (RNP) Z RWY 11

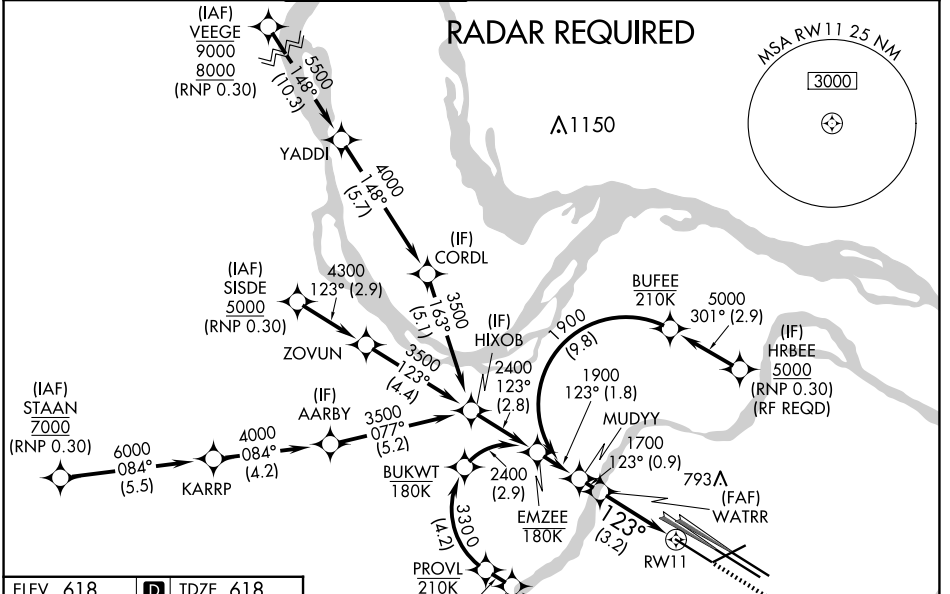
ST LOUIS LAMBERT INTL (STL)

For uncompensated Baro-VNAV systems, procedure NA below -16°C (4°F) or above 54°C (130°F). Simultaneous approach authorized with Rwy 12L/R, except for arrivals at RRRPP and HRBEE. Use of FD or AP providing RNAV track guidance required during simultaneous operations. GPS required. For inop ALS, increase RNP 0.30 all Cats visibility to ¾.

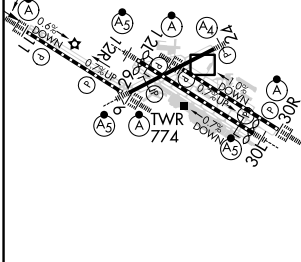
ALS-F-2

MISSED APPROACH: Climb to 1100 then climbing right turn to 3000 direct IMPER and hold.

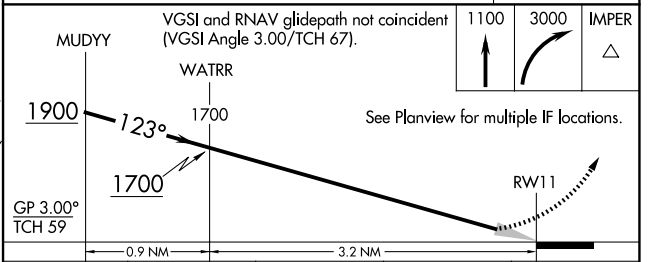
|                                  |                      |                        |  |                    |       |
|----------------------------------|----------------------|------------------------|--|--------------------|-------|
| D-ATIS                           | ST. LOUIS APP CON    | ST. LOUIS TOWER        | GND CON  | CLNC DEL           | CPDLC |
| <b>125.025</b><br><b>379.925</b> | <b>132.125 360.6</b> | <b>132.475 239.275</b> | <b>121.9 348.6</b> (Inbound)<br><b>121.65 377.175</b> (Outbound)<br><b>118.925 227.125</b> (Rwy 11/29) | <b>119.5 363.1</b> |       |



|                         |          |          |
|-------------------------|----------|----------|
| ELEV 618                | <b>D</b> | TDZE 618 |
| Rwy 6-24 7603 X 150     |          |          |
| Rwy 11-29 9000 X 150    |          |          |
| Rwy 12L-30R 9013 X 150  |          |          |
| Rwy 12R-30L 11020 X 150 |          |          |



MISSED APCH FIX IMPER



|             |   |       |             |   |
|-------------|---|-------|-------------|---|
| CATEGORY    | A | B     | C           | D |
| RNP 0.30 DA |   | 875-½ | 257 (300-½) |   |

HIRL all Rwys  
TDZ/CL Rwys 11, 12L, 12R, 29, and 30R

ST. LOUIS, MISSOURI  
Orig-B 17AUG17

38°45'N-90°22'W

## AUTHORIZATION REQUIRED

ST LOUIS LAMBERT INTL (STL)  
RNAV (RNP) Z RWY 11

NC-3, 23 JAN 2025 to 20 FEB 2025

NC-3, 23 JAN 2025 to 20 FEB 2025