


APP CRS	Rwy Idg	10553
123°	TDZE	540
	Apt Elev	618

RNAV (RNP) Z RWY 12R

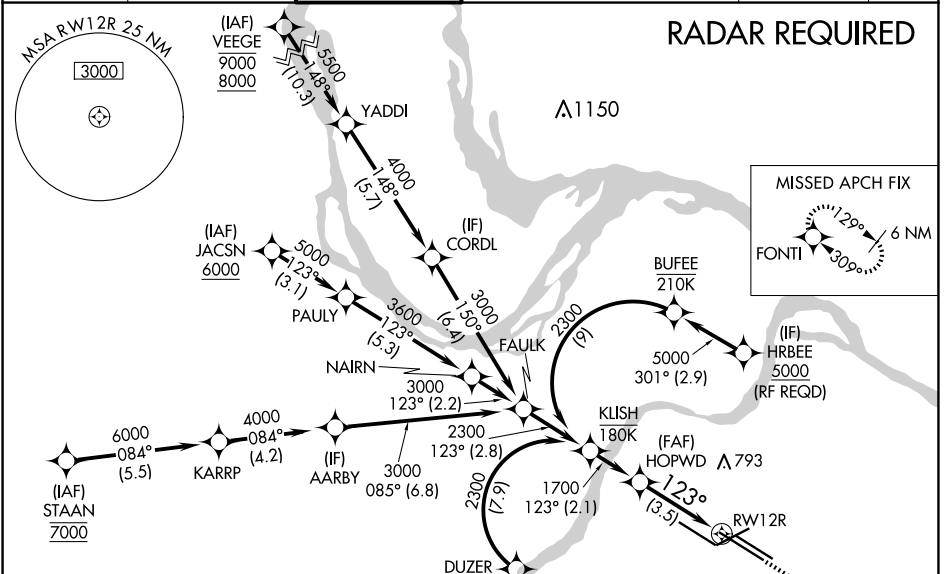
ST LOUIS LAMBERT INTL (STL)

For uncompensated Baro-VNAV systems, procedure NA below -16°C (4°F) or above 54°C (130°F). GPS required. For inop ALS, increase RNP 0.30 all Cats visibility to 1½ SM. Simultaneous approach authorized with Rwy 11 except for arrivals at RRRIP and HRBEE. Use of FD or AP required during simultaneous operations.

MALSR 

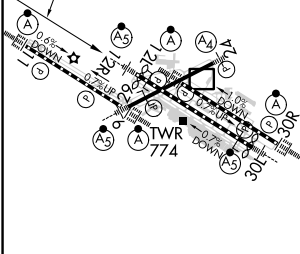
MISSED APPROACH: Climb to 5000 on track 123° to FONTI and hold, continue climb-in-hold to 5000.

D-ATIS 125.025 379.925	ST. LOUIS APP CON 132.125 360.6	ST. LOUIS TOWER 118.5 257.7	GND CON 121.9 348.6 (Inbound) 121.65 377.175 (Outbound) 118.925 227.125 (Rwy 11/29)	CLNC DEL 119.5 363.1	CPDLC
--	---	---------------------------------------	---	--------------------------------	-------



ELEV 618	D TDZE 540
----------	-------------------

Rwy 6-24 7603 X 150
Rwy 11-29 9000 X 150
Rwy 12L-30R 9013 X 150
Rwy 12R-30L 11020 X 150



See planview for multiple IF locations.			
HOPWD 1700		FONTI 5000	
1700		tr 123°	
123°		RWY 12R	
GP 3.00°	TCH 54		
3.5 NM			
CATEGORY	A	B	C
RNP 0.30 DA	998/60 458 (400-1¼)		
AUTHORIZATION REQUIRED			

NC-3, 23 JAN 2025 to 20 FEB 2025

NC-3, 23 JAN 2025 to 20 FEB 2025