

ST. LOUIS, MISSOURI

# TACAN RWY 30L

ST. LOUIS LAMBERT INTL (KSTL)

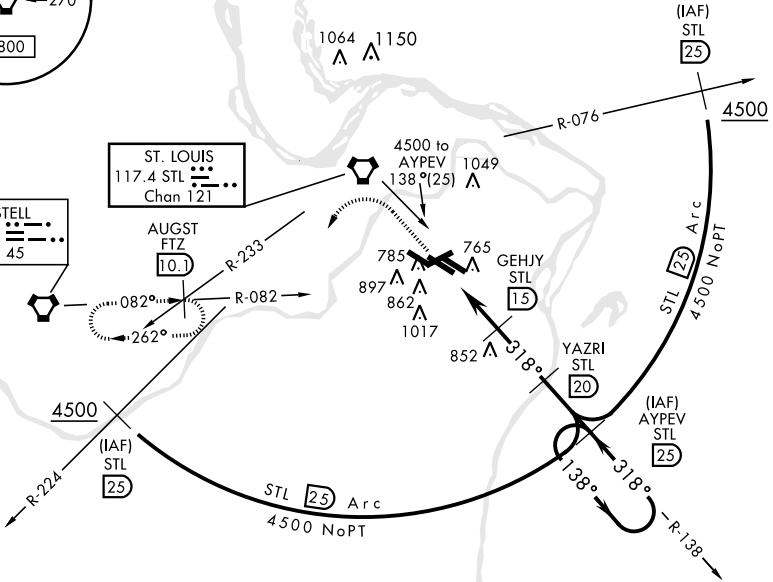
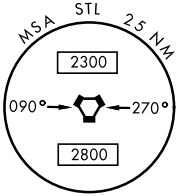
VORTAC STL <b>117.4</b> Chan <b>121</b>	APCH CRS <b>318°</b>	Rwy ldg <b>10,818</b> TDZE <b>583</b> Arprt Elev <b>618</b>
---	-------------------------	---

AL-360 [USAF]

<b>NA</b>	* Inoperative table does not apply.	MALSR 
-----------	-------------------------------------	-----------

MISSED APPROACH: Climb to 5000 via STL R-138 and FTZ VORTAC R-082 to AUGST INT/FTZ 10.1 DME and hold.

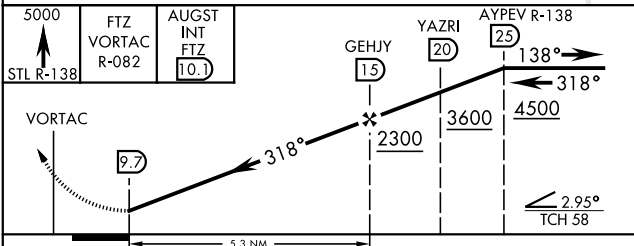
ATIS <b>120.05 379.925</b>	ST. LOUIS APP CON <b>121.02 338.25</b>	N <b>120.05</b> W <b>132.475</b> S <b>118.5</b> E <b>284.6</b> S <b>239.275</b> W <b>257.7</b>	GND CON <b>121.9 348.6</b> (Inbnd) <b>121.65 377.175</b> (Outbnd) <b>118.925 227.125</b>	CLNC DEL <b>119.5 363.1</b>
-------------------------------	---	---	---	--------------------------------



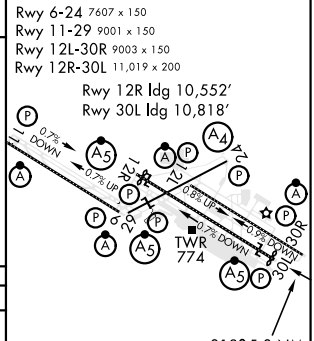
NC-3, 23 JAN 2025 to 20 FEB 2025

NC-3, 23 JAN 2025 to 20 FEB 2025

EMERG SAFE ALT 100 NM 3500



ELEV 618	TDZE 583
----------	----------



CATEGORY	A	B	C	D	E
S-30L *	1100/50	517 (500-1)	1100-1½ 517(500-1½)	1100-1¾ 517 (500-1¾)	
CIRCLING	NOT AUTHORIZED				

HIRL All Rwy  
REIL Rwy 12L  
TDZL/CL Rwy 11-29,  
12L-30R, and 12R

318° 5.3 NM  
from FAF

ST. LOUIS, MISSOURI  
Amdt 1 18200

38°45'N-90°22'W

ST. LOUIS LAMBERT INTL (KSTL)

# TACAN RWY 30L