

**TOP ALTITUDE:
5000**

TAKEOFF MINIMUMS

Rwys 6, 24: Standard with minimum climb of 500' per NM to 1120 then minimum climb of 280' per NM to 5000.

Rwys 11, 12L/R: Standard with minimum climb of 500' per NM to FUNKE.

Rwy 29: Standard with minimum climb of 500' per NM to DSAPP.

Rwys 30L/R: Standard with minimum climb of 500' per NM to WOLTR.

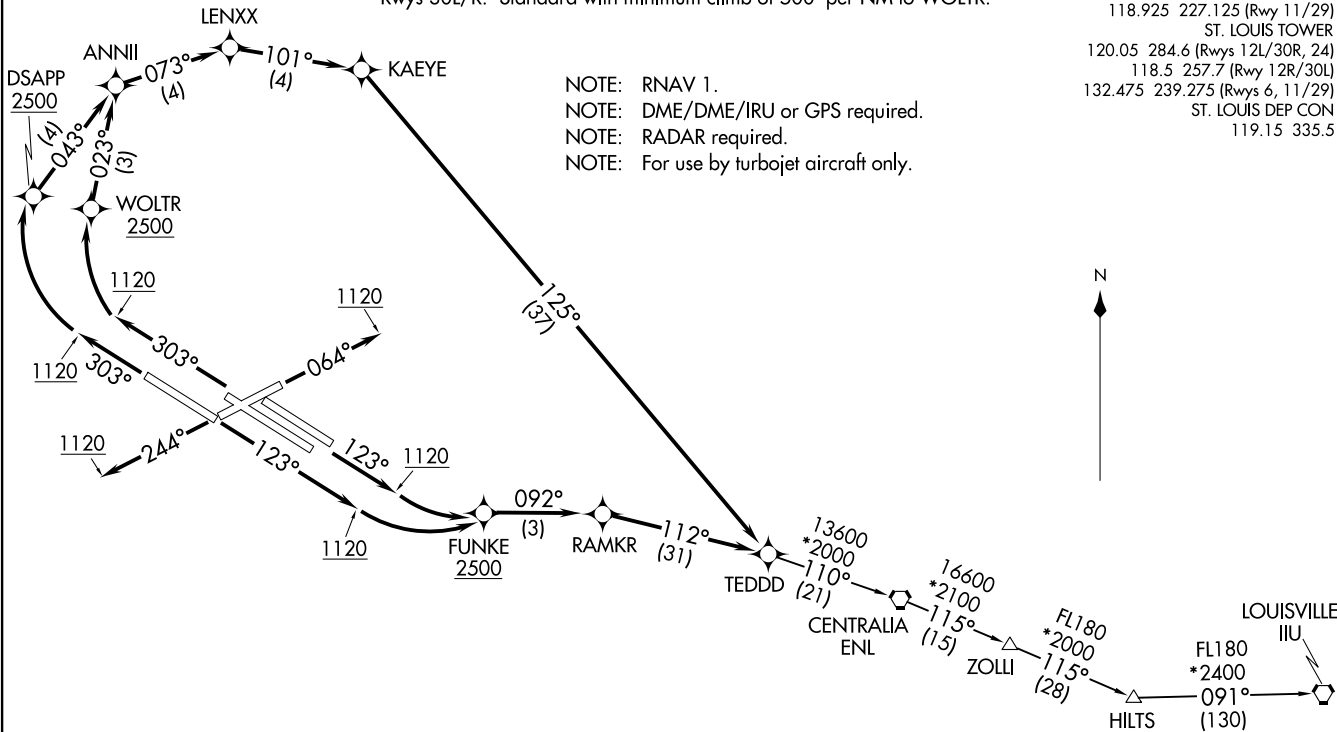
D-ATIS
125.025 379.925
CLNC DEL
119.5 363.1
CPDLC
GND CON
121.9 348.6 (Inbound)
121.65 377.175 (Outbound)
118.925 227.125 (Rwy 11/29)
ST. LOUIS TOWER
120.05 284.6 (Rwys 12L/30R, 24)
118.5 257.7 (Rwy 12R/30L)
132.475 239.275 (Rwys 6, 11/29)
ST. LOUIS DEP CON
119.15 335.5

NOTE: RNAV 1.
NOTE: DME/DME/IRU or GPS required.
NOTE: RADAR required.
NOTE: For use by turbojet aircraft only.

ST. LOUIS MISSOURI
ST LOUIS LAMBERT INTL (STL)
(TEDD5, TEDD) 190U18

ST. LOUIS MISSOURI
ST LOUIS LAMBERT INTL (STL)
TEDDD FIVE DEPARTURE (RNAV)

ST. LOUIS MISSOURI
ST LOUIS LAMBERT INTL (STL)



NOTE: Chart not to scale.

(NARRATIVE ON FOLLOWING PAGE)

(TEDDD5, TEDD) 18312

ST LOUIS LAMBERT INTL (STL)
ST. LOUIS, MISSOURI

AL-360 (FAA)

ST. LOUIS MISSOURI
ST LOUIS LAMBERT INTL (STL)



DEPARTURE ROUTE DESCRIPTION

TAKEOFF RUNWAY 6: Climb heading 064° to 1120, then as assigned by ATC, expect RADAR vectors to TEDDD. Thence. . . .

TAKEOFF RUNWAY 24: Climb heading 244° to 1120, then as assigned by ATC, expect RADAR vectors to TEDDD. Thence. . . .

TAKEOFF RUNWAYS 11, 12L/R: Climb heading 123° to 1120, then left turn direct FUNKE, cross FUNKE at or above 2500, then on depicted route to TEDDD. Thence. . . .

TAKEOFF RUNWAY 29: Climb heading 303° to 1120, then right turn direct DSAPP, cross DSAPP at or above 2500, then on depicted route to TEDDD. Thence. . . .

TAKEOFF RUNWAYS 30L/R: Climb heading 303° to 1120, then right turn direct WOLTR, cross WOLTR at or above 2500, then on depicted route to TEDDD. Thence. . . .

. . . . (transition). Maintain 5000, expect filed altitude 10 minutes after departure.

HILTS TRANSITION (TEDDD5.HILTS)

LOUISVILLE TRANSITION (TEDDD5.IIU)

NC-3, 23 JAN 2025 to 20 FEB 2025

NC-3, 23 JAN 2025 to 20 FEB 2025