

HI-VOR Z or TACAN RWY 21

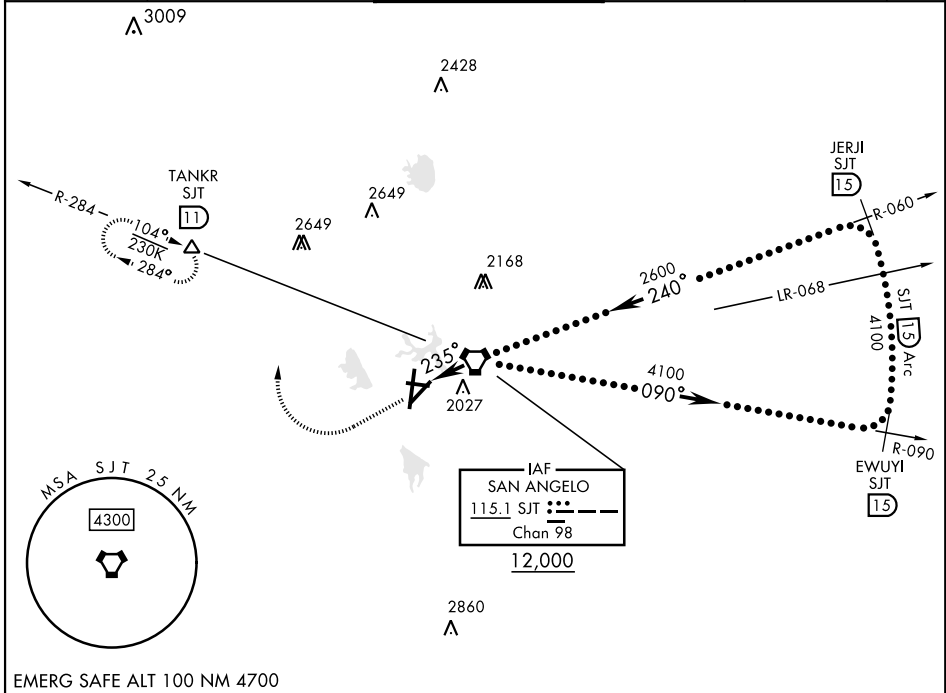
VORTAC SJT 115.1 Chan 98	APCH CRS 235°	Rwy ldg TDZE 1906 Arprt Elev 1919	[USAF]	SAN ANGELO RGNL/MATHIS FLD (KSJT)
--	-------------------------	---	--------	-----------------------------------

DME required

* Circling not authorized for CAT D W of Rwy 18-36.

MISSED APPROACH: Climb to 3000 then climbing right turn to 4400 on heading 360° and SJT VORTAC R-284 to TANKR INT/11 DME and hold, continue climb-in-hold to 4400.

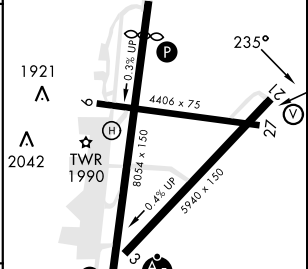
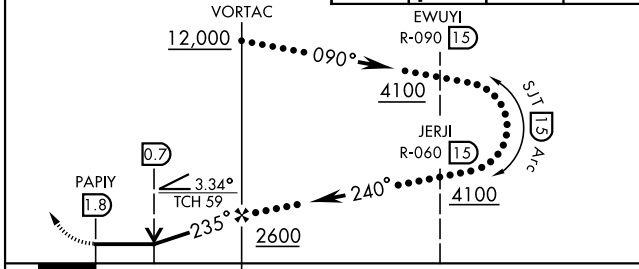
ATIS 128.45 319.0	SAN ANGELO APP CON* 125.35 354.1	MATHIS TOWER* 118.3 0 (CTAF) 284.7	GND CON 121.9 348.6	UNICOM 122.95	ASR
-----------------------------	--	---	-------------------------------	-------------------------	-----



SC-3, 23 JAN 2025 to 20 FEB 2025

SC-3, 23 JAN 2025 to 20 FEB 2025

VGSI and descent angles not coincident (VGSI Angle 3.00/TCH 52)	3000	4400	SJT R-284	TANKR SJT (11)	ELEV 1919	TDZE 1906
---	------	------	-----------	----------------	-----------	-----------



CATEGORY	C	D	E
S-21	2300-1 1/8	394 (400-1 1/8)	
CIRCLING*	2500-1 1/2 581 (600-1 1/2)	2580-2 661 (700-2)	NOT AUTHORIZED

SAN ANGELO, TEXAS 31°21'N-100°30'W SAN ANGELO RGNL/MATHIS FLD (KSJT)

Amtd 2 02DEC21

HI-VOR Z or TACAN RWY 21