

WAAS CH <b>93801</b> <b>W18A</b>	APP CRS <b>182°</b>	Rwy Idg TDZE Apt Elev	<b>7152</b> <b>1908</b> <b>1919</b>
--	------------------------	-----------------------------	---

# RNAV (GPS) RWY 18

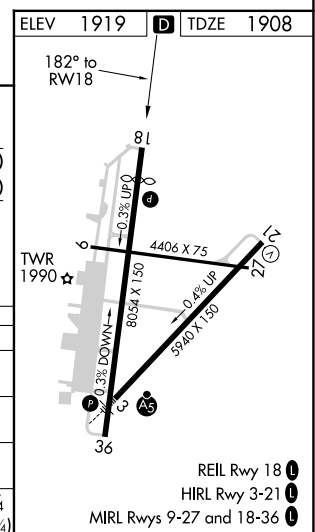
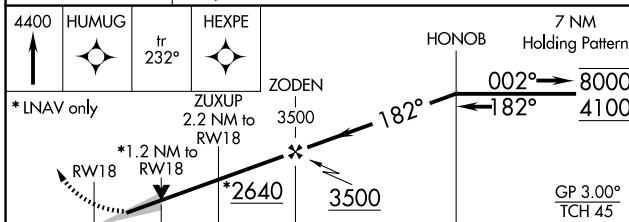
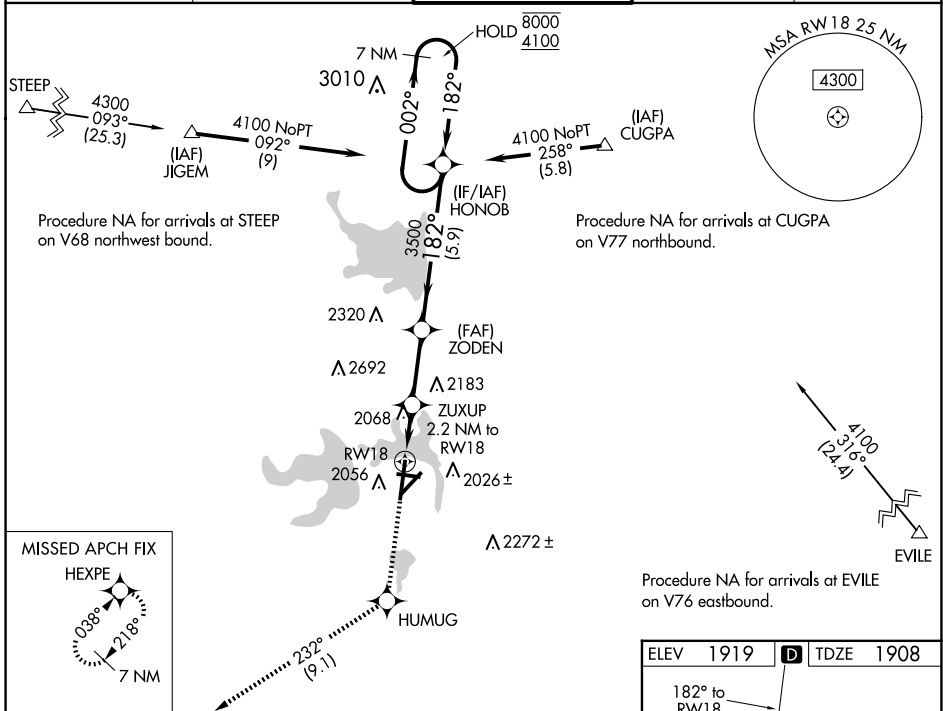
SAN ANGELO RGNL/MATHIS FLD (SJT)

RNP APCH - GPS.

For uncompensated Baro-VNAV systems, LNAV/VNAV NA below -8°C or above 54°C.  
Circling NA for Cat E west of Rwy 18-36.

MISSED APPROACH: Climb to 4400 direct HUMUG and on track 232° to HEXPE and hold.

ATIS <b>128.45 319.0</b>	SAN ANGELO APP CON ★ <b>125.35 354.1</b>	MATHIS TOWER ★ <b>118.3(CTAF) 284.7</b>	GND CON <b>121.9 348.6</b>	UNICOM <b>122.95</b>
-----------------------------	---	--	-------------------------------	-------------------------



CATEGORY	A	B	C	D	E
LPV DA		2158-3/4	250 (300-3/4)		
LNAV/VNAV DA		2246-1	338 (400-1)		
LNAV MDA	2340-1	432 (500-1)	2340-1 1/8	432 (500-1 1/8)	
<b>C</b> CIRCLING	2360-1 441 (500-1)	2380-1 461 (500-1)	2500-1 1/2 581 (600-1 1/2)	2700-2 1/2 781 (800-2 1/2)	2700-2 3/4 781 (800-2 3/4)

SC-3, 23 JAN 2025 to 20 FEB 2025

SC-3, 23 JAN 2025 to 20 FEB 2025