

# BOWIE SEVEN DEPARTURE

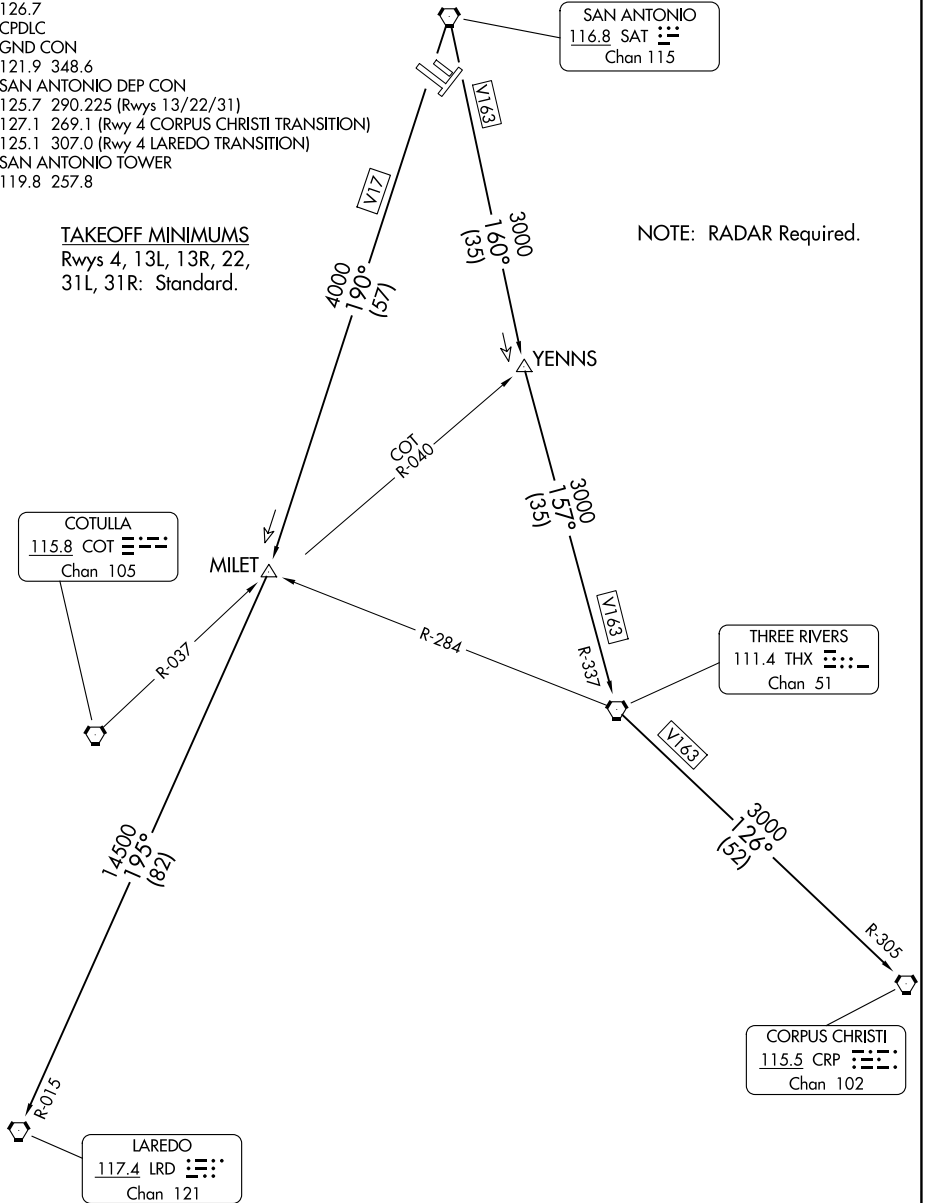
**TOP ALTITUDE:  
5000**

D-ATIS  
118.9  
CLNC DEL  
126.7  
CPDLC  
GND CON  
121.9 348.6  
SAN ANTONIO DEP CON  
125.7 290.225 (Rwys 13/22/31)  
127.1 269.1 (Rwy 4 CORPUS CHRISTI TRANSITION)  
125.1 307.0 (Rwy 4 LAREDO TRANSITION)  
SAN ANTONIO TOWER  
119.8 257.8

TAKEOFF MINIMUMS

Rwys 4, 13L, 13R, 22,  
31L, 31R: Standard.

NOTE: RADAR Required.



SC-3, 23 JAN 2025 to 20 FEB 2025

SC-3, 23 JAN 2025 to 20 FEB 2025

NOTE: Chart not to scale.

(CONTINUED ON FOLLOWING PAGE)

# BOWIE SEVEN DEPARTURE

# BOWIE SEVEN DEPARTURE



## DEPARTURE ROUTE DESCRIPTION

TAKEOFF RWYS 4, 13L 13R, 22, 31L, 31R: Climb on assigned heading for RADAR vectors to SAT VORTAC. Maintain 5000, thence. . .

. . . on transition/route. Expect filed altitude 10 minutes after departure.

CORPUS CHRISTI TRANSITION (BOWIE7.CRP): From over SAT VORTAC on SAT R-160 to YENNS INT/SAT 35 DME, then on THX R-337 to THX VORTAC, then on THX R-126 and CRP R-305 to CRP VORTAC.

LAREDO TRANSITION (BOWIE7.LRD): From over SAT VORTAC on SAT R-190 to MILET INT/SAT 57 DME, then on LRD R-015 to LRD VORTAC.

SC-3, 23 JAN 2025 to 20 FEB 2025

SC-3, 23 JAN 2025 to 20 FEB 2025