

(CRVZA.CRVZA1) 25JAN24

CRVZA ONE ARRIVAL (RNAV) Transition Routes

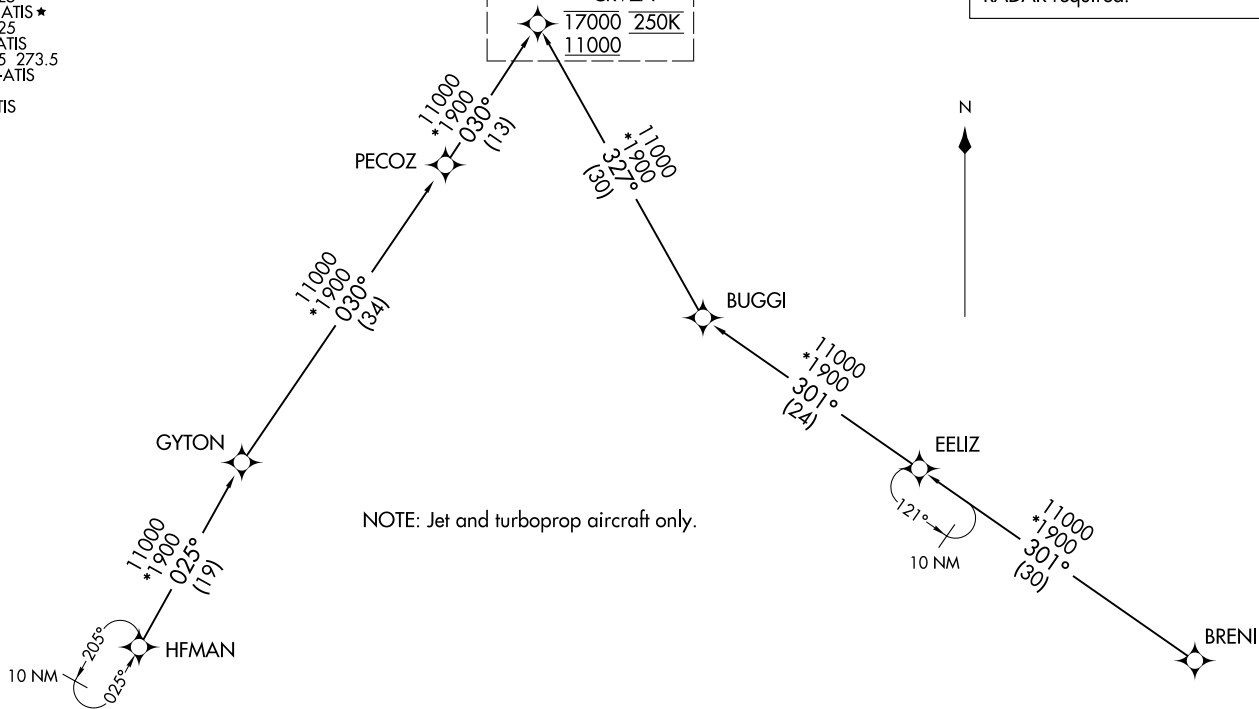
SAN ANTONIO, TEXAS

SAN ANTONIO APP CON  
125.7 290.225  
BAZ ATIS  
119.325  
KRND ATIS ★  
290.525  
KSKF ATIS  
120.45 273.5  
SAT D-ATIS  
118.9  
SSF ATIS  
128.8

See following page  
for Arrival Routes

CRVZA	
17000	250K
11000	

RNAV 1 - DME/DME/IRU or GPS.  
RADAR required.



NOTE: Jet and turboprop aircraft only.

BRENI TRANSITION (BRENI.CRVZA1)  
EELIZ TRANSITION (EELIZ.CRVZA1)  
HFMAN TRANSITION (HFMAN.CRVZA1)

(CONTINUED ON FOLLOWING PAGE)

NOTE: Chart not to scale.

(CRVZA.CRVZA1) 24025

AL-369 (FAA) Transition Routes

SAN ANTONIO, TEXAS

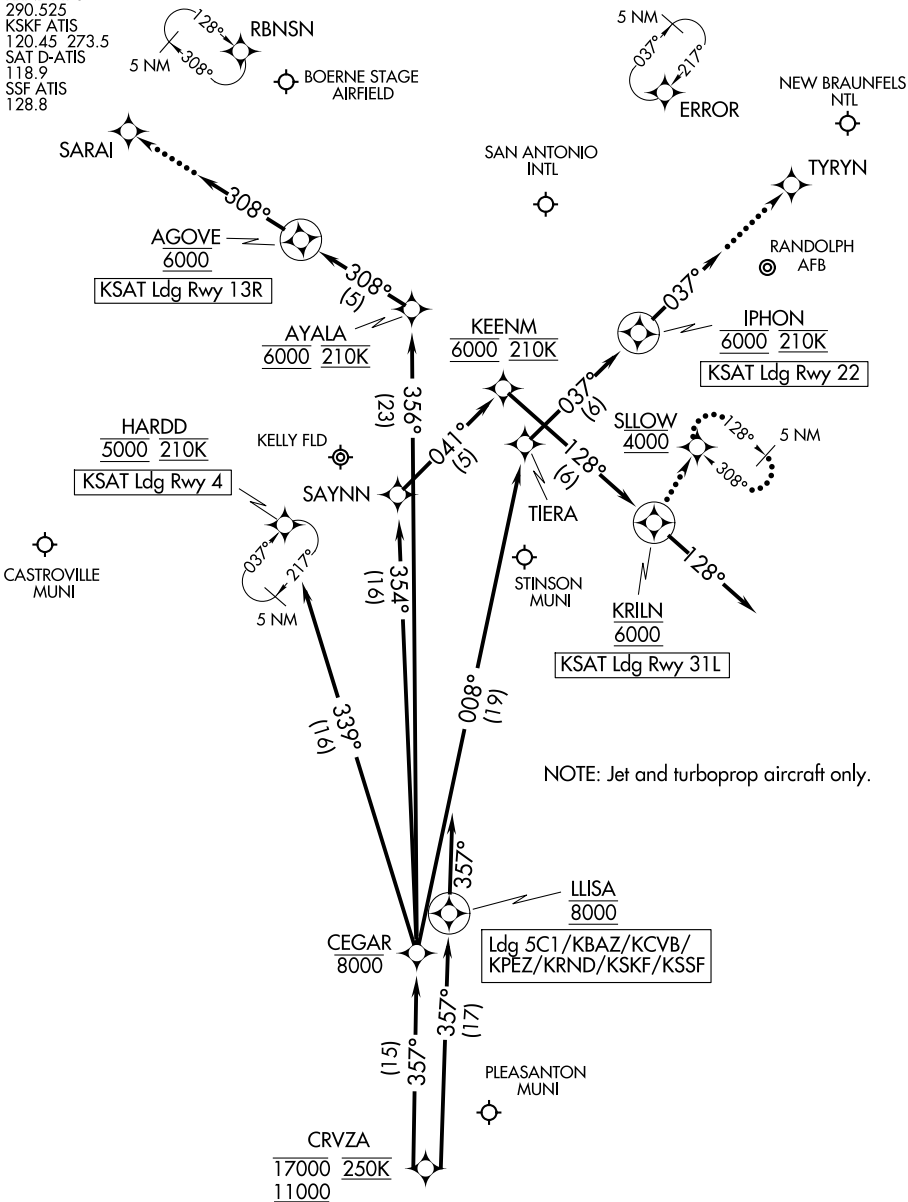
# CRVZA ONE ARRIVAL (RNAV) Arrival Routes

SAN ANTONIO, TEXAS

SAN ANTONIO APP CON  
 125.7 290.225  
 BAZ ATIS  
 119.325  
 KRND ATIS ★  
 290.525  
 KSKF ATIS  
 120.45 273.5  
 SAT D-ATIS  
 118.9  
 SSF ATIS  
 128.8

RNAV 1 - DME/DME/IRU or GPS.

RADAR required.



NOTE: Jet and turboprop aircraft only.

NOTE: Chart not to scale.

(CONTINUED ON FOLLOWING PAGE)

ARRIVAL ROUTE DESCRIPTION

SAN ANTONIO INTL (KSAT): From CRVZA on track 357° to cross CEGAR at or below 8000.

LANDING KSAT RUNWAY 4: From CEGAR on track 339° to cross HARDD at 5000 and at 210K. Expect ILS or LOC RWY 4 approach.

LANDING KSAT RUNWAY 13R: From CEGAR on track 356° to cross AYALA at 6000 and at 210K, then on track 308° to cross AGOVE at 6000, then on track 308°. Expect RADAR vectors to final approach course.

LANDING KSAT RUNWAY 22: From CEGAR on track 008° to TIERA, then on track 037° to cross IPHON at 6000 and at 210K, then on track 037°. Expect RADAR vectors to final approach course.

LANDING KSAT RUNWAY 31L: From CEGAR on track 354° to SAYNN, then on track 041° to cross KEENM at 6000 and at 210K, then on track 128° to cross KRILN at 6000, then on track 128°. Expect RADAR vectors to final approach course.

LANDING KSKF/KBAZ/KCVB/KSSF/KPEZ/5C1/KRND: From CRVZA on track 357° to cross LLISA at 8000, then on track 357°. Expect RADAR vectors to final approach course.

LOST COMMUNICATIONS

KSAT RUNWAY 13R: After AGOVE proceed to SARAI, then on ILS or LOC RWY 13R or RNAV (GPS) Y RWY 13R approach.

KSAT RUNWAY 22: After IPHON proceed to TYRYN, then on RNAV (GPS) Y RWY 22 approach.

KSAT RUNWAY 31L: After KRILN proceed to SLOW at 4000 and hold.

SC-3, 23 JAN 2025 to 20 FEB 2025

SC-3, 23 JAN 2025 to 20 FEB 2025