

| | | |
|-------------|----------|-------------|
| APP CRS | Rwy Idg | 8505 |
| 217° | TDZE | 770 |
| | Apt Elev | 809 |

RNAV (RNP) X RWY 22

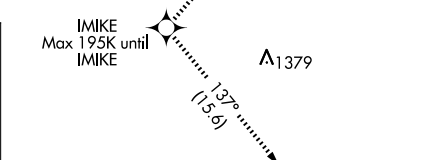
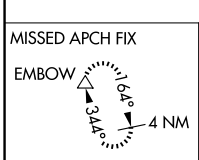
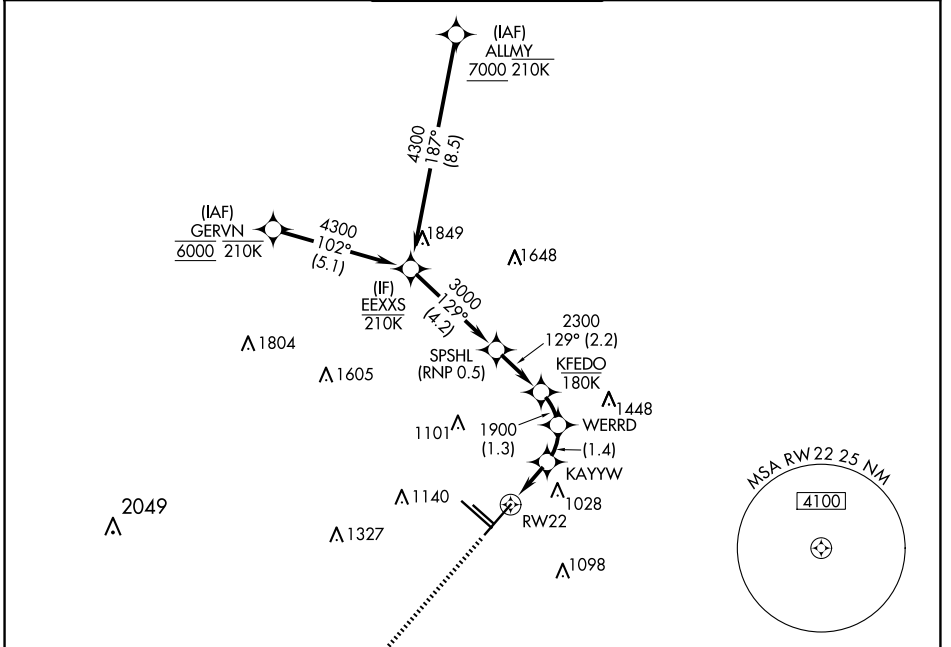
SAN ANTONIO INTL (SAT)

RNP AR APCH - GPS.

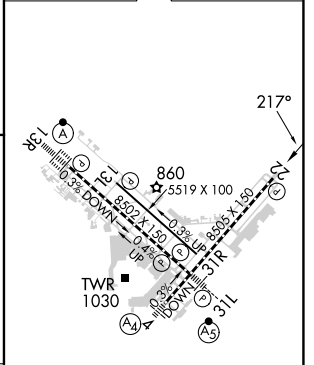
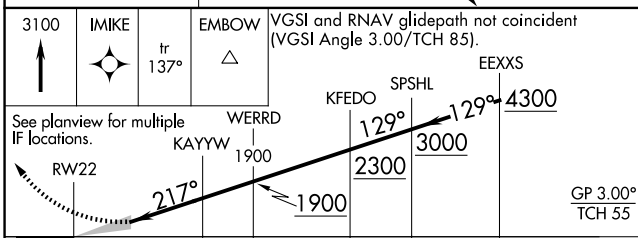
▼ For uncompensated Baro-VNAV systems, procedure NA below -5°C or above 54°C.

MISSED APPROACH: (Do not exceed 195K until IMIKE)
Climb to 3100 direct IMIKE and on track 137° EMBOW and hold.

| | | | | | |
|--------------|---------------------|--------------------|--------------------|--------------|-------|
| D-ATIS | SAN ANTONIO APP CON | SAN ANTONIO TOWER | GND CON | CLNC DEL | CPDLC |
| 118.9 | 125.1 307.0 | 119.8 257.8 | 121.9 348.6 | 126.7 | |



| | | |
|----------|----------|----------|
| ELEV 809 | D | TDZE 770 |
|----------|----------|----------|



| CATEGORY | A | B | C | D |
|-------------|---|-----------|----------------|---|
| RNP 0.15 DA | | 1070-7/8 | 300 (300-7/8) | |
| RNP 0.30 DA | | 1222-13/8 | 452 (500-13/8) | |

TDZ/CL Rwy 13R
 REIL Rwy 13L, 22 and 31R
 HIRL Rwy 4-22 and 13R-31L
 MIRL Rwy 13L-31R

AUTHORIZATION REQUIRED

SC-3, 23 JAN 2025 to 20 FEB 2025

SC-3, 23 JAN 2025 to 20 FEB 2025