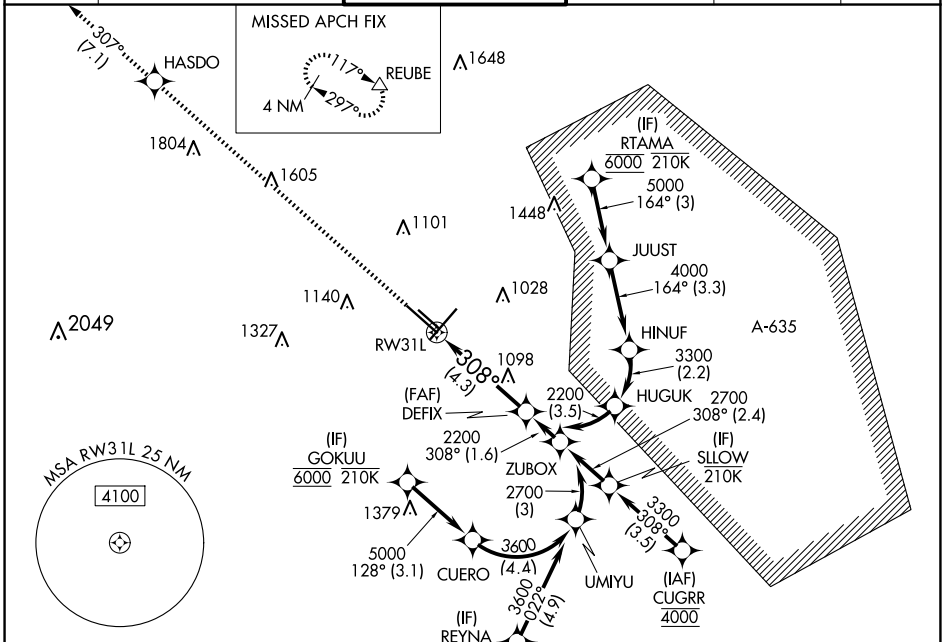


APP CRS	Rwy Idg	<b>8502</b>
<b>308°</b>	TDZE	<b>790</b>
	Apt Elev	<b>809</b>

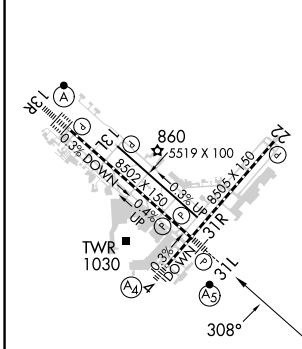
# RNAV (RNP) Z RWY 31L

SAN ANTONIO INTL (SAT)

RNP AR APCH - GPS		MALSR		MISSED APPROACH: Climb to 4200 direct HASDO and track 307° to REUBE and hold.	
<p>▼ For uncompensated Baro-VNAV systems, procedure NA below -5°C or above 54°C. For inop ALS, increase RNP 0.15 all Cats visibility to RVR 5500, increase RNP 0.30 all Cats visibility to RVR 6000.</p>					
D-ATIS	SAN ANTONIO APP CON	SAN ANTONIO TOWER	GND CON	CLNC DEL	CPDLC
<b>118.9</b>	<b>125.1 307.0</b>	<b>119.8 257.8</b>	<b>121.9 348.6</b>	<b>126.7</b>	



ELEV 809	<b>D</b>	TDZE 790
----------	----------	----------



TDZ/CL Rwy 13R	860
REIL Rwys 13L, 22 and 31R	8024, 130, 150
HIRL Rwys 4-22 and 13R-31L	8096, X, 150
MIRL Rwy 13L-31R	31L



4200	HASDO	REUBE	VGSI and RNAV glidepath not coincident (VGSI Angle 3.00°/TCH 82).
↑			
	tr 307°	△	
See planview for multiple IF locations.			
RW31L	DEFIX	2200	2200
		308°	GP 3.00° TCH 60
		4.3 NM	

CATEGORY	A	B	C	D
RNP 0.15 DA		1144/30	354 (400-¾)	
RNP 0.30 DA		1200/40	410 (400-¾)	

**AUTHORIZATION REQUIRED**

SC-3, 23 JAN 2025 to 20 FEB 2025

SC-3, 23 JAN 2025 to 20 FEB 2025