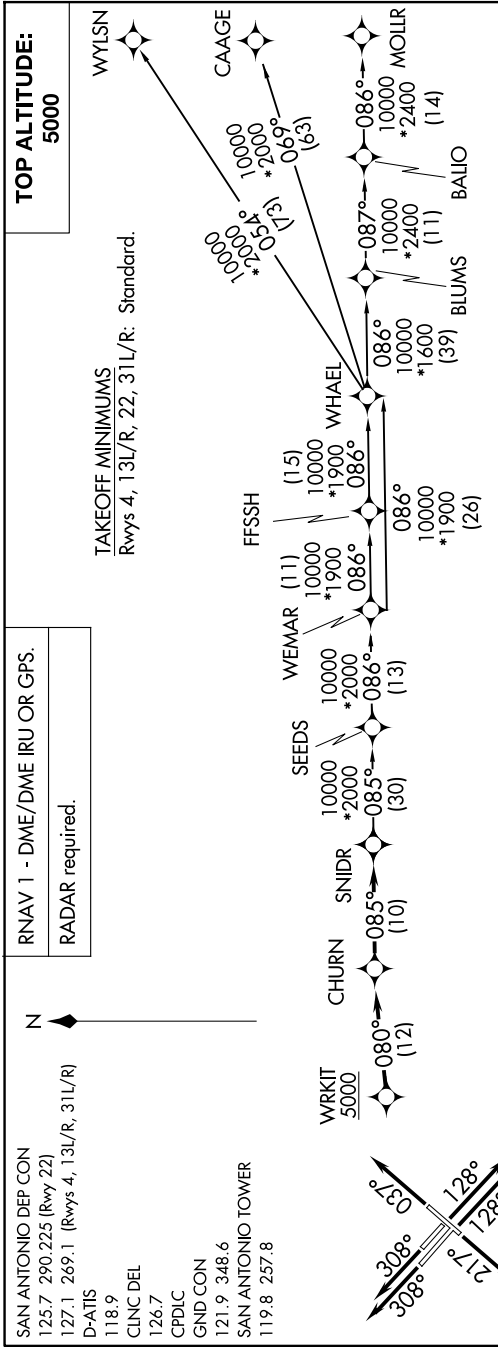


SNIDR ONE DEPARTURE (RNAV)

SC-3, 23 JAN 2025 3:00Z



DEPARTURE ROUTE DESCRIPTION

TAKEOFF RUNWAY 4: Climb on heading 037° or as assigned by ATC, for vectors to WRKIT, thence. . . .
 TAKEOFF RUNWAY 13L/R: Climb on heading 128° or as assigned by ATC, for vectors to WRKIT, thence. . . .
 TAKEOFF RUNWAY 22: Climb on heading 217° or as assigned by ATC, for vectors to WRKIT, thence. . . .
 TAKEOFF RUNWAY 31L/R: Climb on heading 308° or as assigned by ATC, for vectors to WRKIT, thence. . . .

. . . on track 080° to CHURN, then on track 085° to SNIDR, then on transition. Maintain 5000.

BLUMS TRANSITION (SNIDR1.BLUMS)
 CAAGE TRANSITION (SNIDR1.CAAGE)
 FFSSH TRANSITION (SNIDR1.FFSSH)
 MOLLR TRANSITION (SNIDR1.MOLLR)
 SEEDS TRANSITION (SNIDR1.SEEDS)
 WEMAR TRANSITION (SNIDR1.WEMAR)
 WHAEL TRANSITION (SNIDR1.WHAEL)
 WYLSN TRANSITION (SNIDR1.WYLSN)

SAN ANTONIO DEP CON
 125.7 290.225 (Rwy 22)
 127.1 269.1 (Rwys 4, 13L/R, 31L/R)
 D-ATIS
 118.9
 CLNC DEL
 126.7
 CPDLC
 GND CON
 121.9 348.6
 SAN ANTONIO TOWER
 119.8 257.8

SNIDR ONE DEPARTURE (RNAV)

(SNIDR1.SNIDR) 25JAN24

Note: Chart not to scale.