

BUFLT FOUR DEPARTURE

AL-379 (FAA)

SANTA MARIA, CALIFORNIA

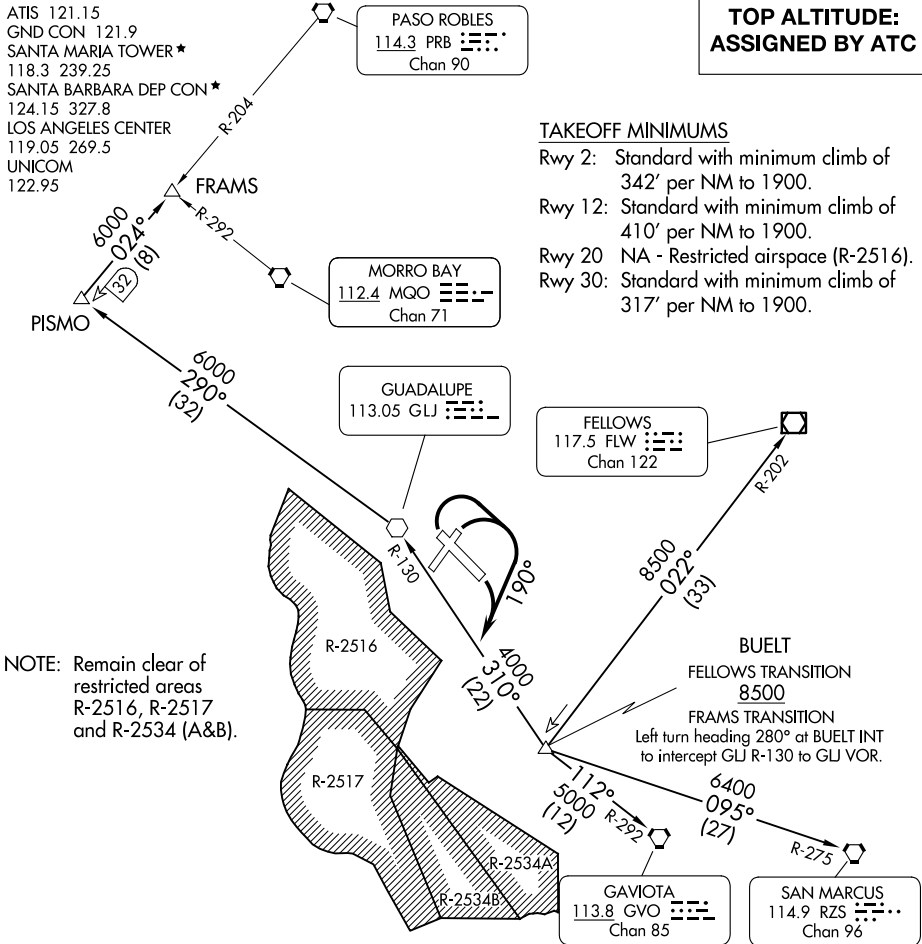
ATIS 121.15
 GND CON 121.9
 SANTA MARIA TOWER *
 118.3 239.25
 SANTA BARBARA DEP CON *
 124.15 327.8
 LOS ANGELES CENTER
 119.05 269.5
 UNICOM
 122.95

PASO ROBLES
 114.3 PRB
 Chan 90

**TOP ALTITUDE:
 ASSIGNED BY ATC**

TAKEOFF MINIMUMS

- Rwy 2: Standard with minimum climb of 342' per NM to 1900.
- Rwy 12: Standard with minimum climb of 410' per NM to 1900.
- Rwy 20: NA - Restricted airspace (R-2516).
- Rwy 30: Standard with minimum climb of 317' per NM to 1900.



NOTE: Remain clear of restricted areas R-2516, R-2517 and R-2534 (A&B).

NOTE: Chart not to scale.

DEPARTURE ROUTE DESCRIPTION

- TAKEOFF RUNWAYS 2, 12, 30:** Climbing right turn heading 190° to intercept GLJ R-130 to BUFLT.
- FELLOWS TRANSITION (BUFLT4.FLW):** From over BUFLT INT on FLW R-202 to FLW VOR/DME.
- FRAMS TRANSITION (BUFLT4.FRAMS):** Left turn heading 280° at BUFLT INT to intercept GLJ R-130 to GLJ VOR, then on GLJ R-290 to PISMO INT, then on PRB R-204 to FRAMS INT.
- GAVIOTA TRANSITION (BUFLT4.GVO):** From over BUFLT INT on GVO R-292 to GVO VORTAC.
- SAN MARCUS TRANSITION (BUFLT4.RZS):** From over BUFLT INT on RZS R-275 to RZS VORTAC.

BUFLT FOUR DEPARTURE

SANTA MARIA, CALIFORNIA

SW-3, 23 JAN 2025 to 20 FEB 2025

SW-3, 23 JAN 2025 to 20 FEB 2025