

LOC/DME I-SMX 108.9 Chan 26	APP CRS 300°	Rwy Idg TDZE Apt Elev N/A N/A 261
--	------------------------	---

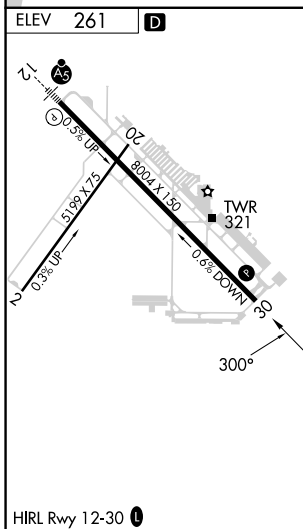
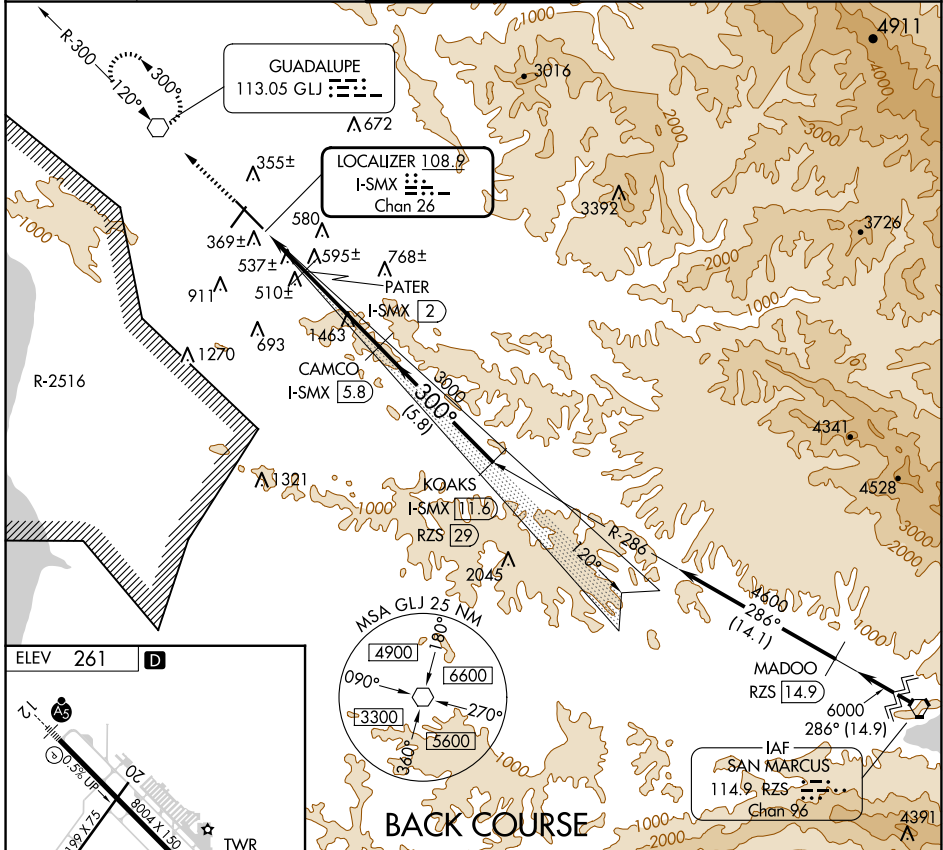
LOC/DME BC-A

SANTA MARIA PUB/CAPT G ALLAN HANCOCK FLD (SMX)

⚠ Circling to Rwy 2 NA at night. Helicopter visibility reduction below 1 SM NA. When local altimeter setting not received, use San Luis Obispo altimeter setting and increase all MDA 60 feet.

MISSED APPROACH: Climb to 2100 direct GLJ VOR and hold.

ATIS 121.15	SANTA BARBARA APP CON* 124.15 327.8	SANTA MARIA TOWER* 118.3 (CTAF) 239.25	GND CON 121.9	UNICOM 122.95
-----------------------	---	---	-------------------------	-------------------------



2100	GLJ	Use I-SMX DME when on LOC course.	KOAKS I-SMX 11.6	
↑	⬡		RZS 29	
		PATER I-SMX 2	CAMCO I-SMX 5.8	
		I-SMX 0.5		
		1720	4600	
		Disregard glide slope indications	Procedure Turn NA	
		0.7 1.5 3.8 NM	5.8 NM	
CATEGORY	A	B	C	D
CIRCLING	1100-1¼	839 (900-1¼)	1420-3	1540-3
			1159 (1200-3)	1279 (1300-3)

SW-3, 23 JAN 2025 to 20 FEB 2025

SW-3, 23 JAN 2025 to 20 FEB 2025