

# RNAV (GPS) RWY 30

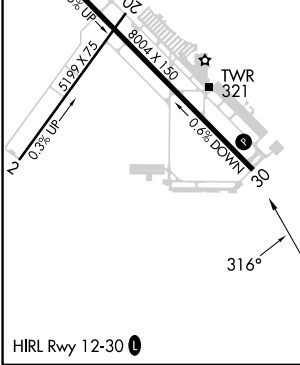
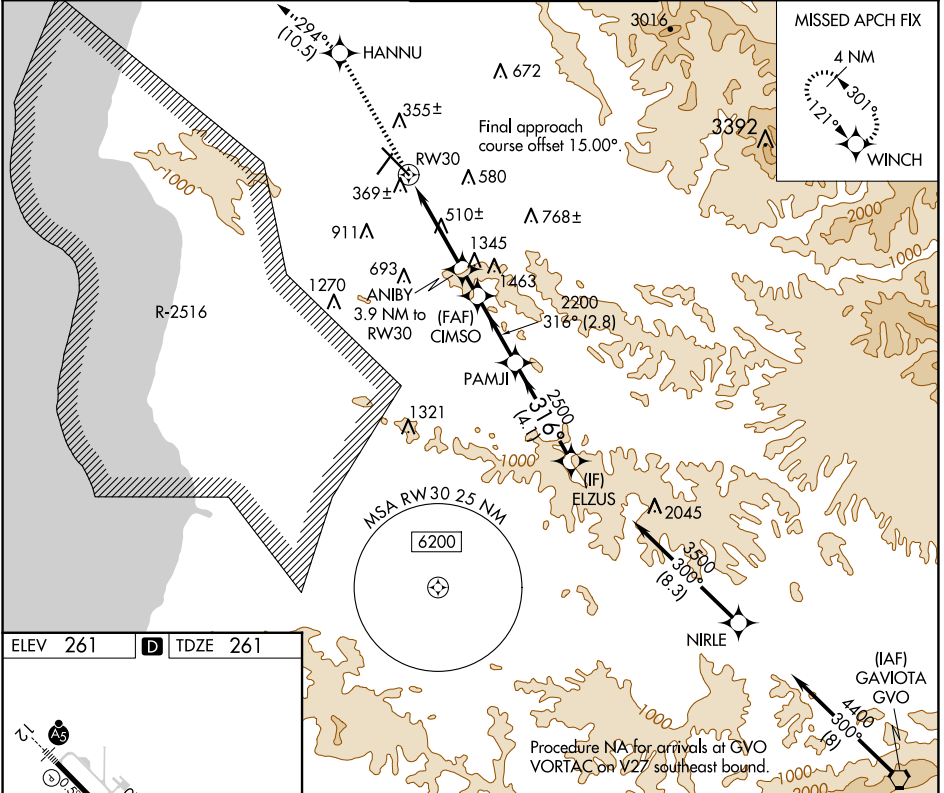
SANTA MARIA PUB/CAPT G ALLAN HANCOCK FLD (SMX)

APP CRS	Rwy ldg	<b>8004</b>
<b>316°</b>	TDZE	<b>261</b>
	Apt Elev	<b>261</b>

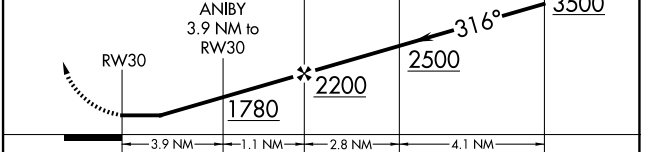
**⚠** DME/DME RNP-0.3 NA. When local altimeter setting not received, use San Luis Obispo County Rgnl altimeter setting and increase all MDA 60 feet. Rwy 30 helicopter visibility reduction below 1 SM NA. Straight-in Rwy 30 NA at night, Circling Rwy 2, 30 NA at night.

**MISSED APPROACH:** Climb to 4000 direct HANNU and on track 294° to WINCH and hold.

ATIS	SANTA BARBARA APP CON *	SANTA MARIA TOWER *	GND CON	UNICOM
<b>121.15</b>	<b>124.15 327.8</b>	<b>118.3 (CTAF) 0 239.25</b>	<b>121.9</b>	<b>122.95</b>



ELEV 261	<b>D</b>	TDZE 261
----------	----------	----------



CATEGORY	A	B	C	D
LNNAV MDA	1600-1¼ 1339 (1400-1¼)	1600-1½ 1339 (1400-1½)	1600-3 1339 (1400-3)	NA
CIRCLING	1600-1¼ 1339 (1400-1¼)	1600-1½ 1339 (1400-1½)	1600-3 1339 (1400-3)	NA

SW-3, 23 JAN 2025 to 20 FEB 2025

SW-3, 23 JAN 2025 to 20 FEB 2025