

LOC/DME I-RMT 110.35 Chan 40 (Y)	APP CRS 126°	Rwy Idg 8279 TDZE 3963 Apt Elev 3967
---	------------------------	---

ILS or LOC/DME RWY 12

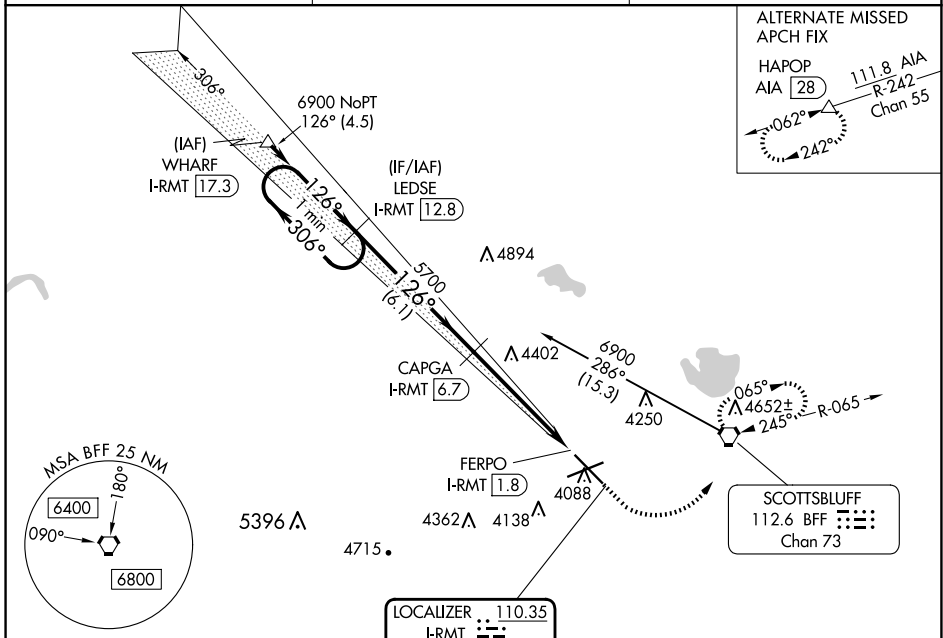
SCOTTSLUFF/WESTERN NEBRASKA RGNL/WM B HEILIG FLD (BFF)

⚠ When local altimeter setting not received, use Alliance altimeter setting and increase DA 91 feet; all MDAs 100 feet, and S-LOC 12 and Circling Cat B/C/D visibilities ¼ mile. For inoperative MALSR, when using Alliance altimeter setting, increase S-ILS 12 visibility to 1. VDP NA when using Alliance altimeter setting.

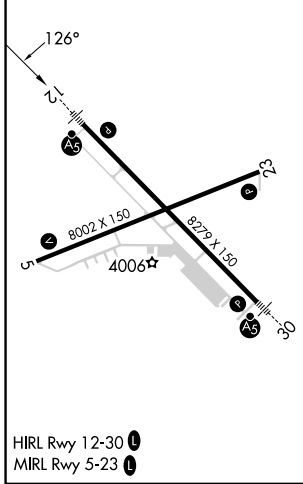


MISSED APPROACH: Climb to 4500 then climbing left turn to 6900 direct BFF VORTAC and hold, continue climb-in-hold to 6900.

ASOS 121.025	DENVER CENTER 127.95 338.2	UNICOM 123.0 (CTAF)
------------------------	--------------------------------------	-------------------------------



ELEV 3967	D	TDZE 3963
-----------	----------	-----------



SCOTTSLUFF, NEBRASKA
Orig-B 30JAN20

LOCALIZER 110.35
I-RMT 1.8
Chan 40(Y)

DME REQUIRED

ILS unusable from FERPO/1.8 DME inbound.			
One Minute Holding Pattern	LEDSE I-RMT 12.8	CAPGA I-RMT 6.7	4500 6900 BFF
6900 ← 306°	126° →	5700	I-RMT 3.5 FERPO I-RMT 1.8
GS 3.00° TCH 57		5700	
	6.1 NM	3.2 NM	1.7 NM 0.3
CATEGORY	A	B	C D
S-ILS 12	4163-½ 200 (200-½)		
S-LOC 12	4640-½ 677 (700-½)	4640-1½ 677 (700-1½)	4640-1¾ 677 (700-1¾)
C CIRCLING	4640-1 673 (700-1)	4640-2 673 (700-2)	4740-2½ 773 (800-2½)

SCOTTSLUFF/WESTERN NEBRASKA RGNL/WM B HEILIG FLD (BFF)
41°52'N-103°36'W

ILS or LOC/DME RWY 12

NC-2, 23 JAN 2025 to 20 FEB 2025

NC-2, 23 JAN 2025 to 20 FEB 2025