

VORTAC BFF	APP CRS	Rwy Idg	8002
112.6	245°	TDZE	3967
Chan 73		Apt Elev	3967

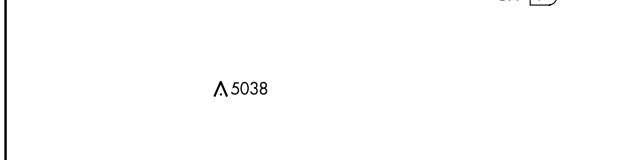
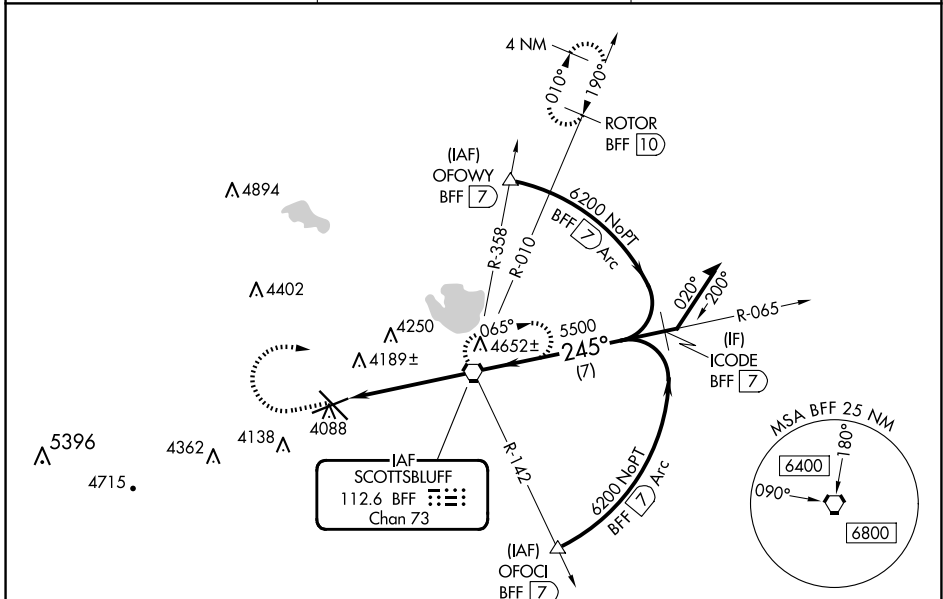
VOR or TACAN RWY 23

SCOTTSSLUFF/WESTERN NEBRASKA RGNL/WM B HEILIG FLD (BFF)

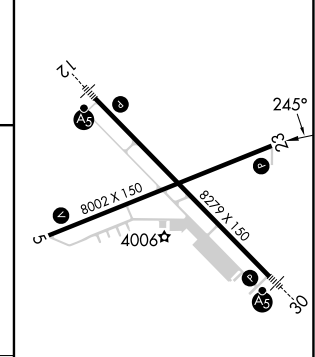
⚠ When local altimeter setting not received, use Alliance altimeter setting: increase all MDAs 100 feet and visibility Cats C and D ½ SM. VDP NA when using Alliance altimeter setting. Visibility reduction by helicopters NA.

MISSED APPROACH: Climb to 5000 then climbing right turn to 6500 direct BFF VORTAC and hold (TACAN aircraft continue climb to 7300 via BFF R-010 to ROTOR 10 DME and hold north, right turn 190° inbound).

ASOS 121.025	DENVER CENTER 127.95 338.2	UNICOM 123.0 (CTAF) 0
------------------------	--------------------------------------	---------------------------------



ELEV 3967	D TDZE 3967
-----------	--------------------



5000	6500	BFF
↑	↷	⬡
BFF VORTAC Remain within 10 NM 6200 5500 1.5 NM 3.1 NM		

CATEGORY	A	B	C	D
S-23	4500-1 533 (600-1)	4500-1½ 533 (600-1½)	4500-1¾ 533 (600-1¾)	4500-2 533 (600-2)
C CIRCLING	4500-1 533 (600-1)	4560-1½ 593 (600-1½)	4740-2½ 773 (800-2½)	

HIRL Rwy 12-30 L	
MIRL Rwy 5-23 L	
FAF to MAP 4.7 NM	
Knots	60 90 120 150 180
Min:Sec	4:42 3:08 2:21 1:53 1:34

VOR or TACAN RWY 23

NC-2, 23 JAN 2025 to 20 FEB 2025

NC-2, 23 JAN 2025 to 20 FEB 2025