

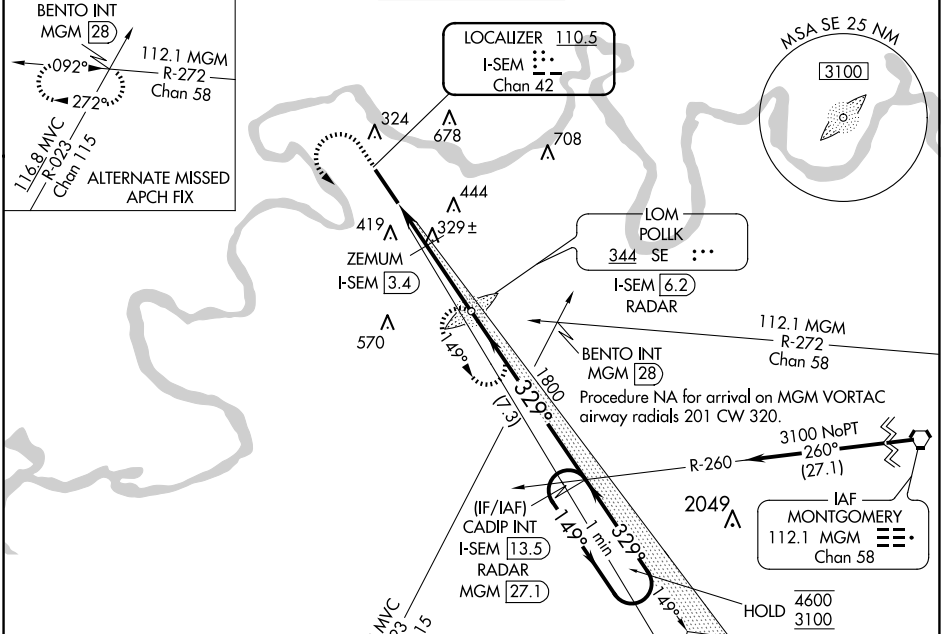
LOC/DME I-SEM 110.5 Chan 42	APP CRS 329°	Rwy Idg 8014 TDZE 165 Apt Elev 166
---	------------------------	---

I LS Z or LOC Z RWY 33

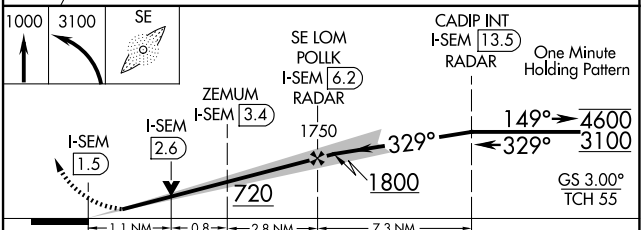
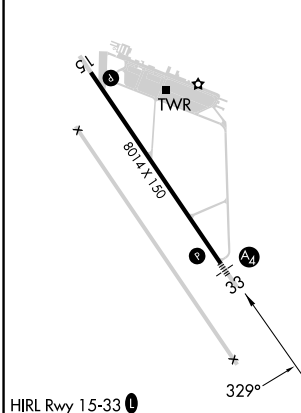
CRAIG FLD (SEM)

ADF required.	MALS	MISSED APPROACH: Climb to 1000 then climbing left turn to 3100 direct POLK LOM/6.2 DME/RADAR and hold, continue climb-in-hold to 3100.
<p>▼ Inop table does not apply to S-ILS Rwy 33.</p> <p>▲ NA For inop ALS, increase S-LOC 33 Cat E visibility to 1½ SM and ZEMUM fix minimums S-LOC 33 Cats C-E visibility to 1½ SM.</p>		

AWOS-3PT 119.15	MONTGOMERY APP CON ★ 124.0 363.025	CRAIG TOWER★ 120.85	GND CON 121.675	UNICOM 122.7 (CTAF) 0
---------------------------	--	-------------------------------	---------------------------	---------------------------------



ELEV 166	TDZE 165
----------	----------



CATEGORY	A	B	C	D	E
S-ILS 33	365-¾ 200 (200-¾)				415-¾ 250 (300-¾)
S-LOC 33	720-¾	555 (600-¾)	720-1⅜ 555 (600-1½)		
CIRCLING	720-1	760-1	760-1½	1040-2¾	1040-3
	554 (600-1)	594 (600-1)	594 (600-1½)	874 (900-2¾)	874 (900-3)
ZEMUM FIX MINIMUMS					
S-LOC 33	580-¾	415 (500-¾)	580-1		415 (500-1)
CIRCLING	660-1	760-1	760-1½	1040-2¾	1040-3
	494 (500-1)	594 (600-1)	594 (600-1½)	874 (900-2¾)	874 (900-3)

Knots	60	90	120	150	180
Min:Sec	4:42	3:08	2:21	1:53	1:34

SE-4, 23 JAN 2025 to 20 FEB 2025

SE-4, 23 JAN 2025 to 20 FEB 2025