

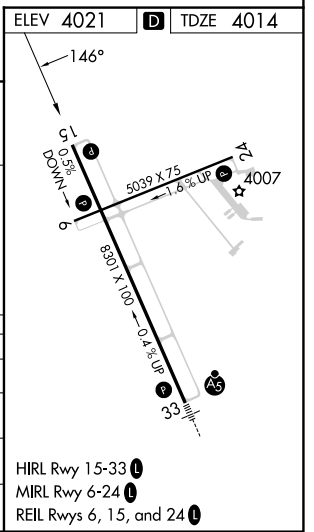
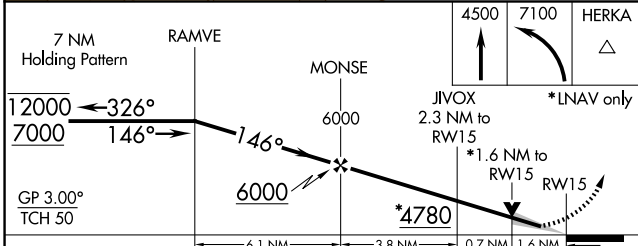
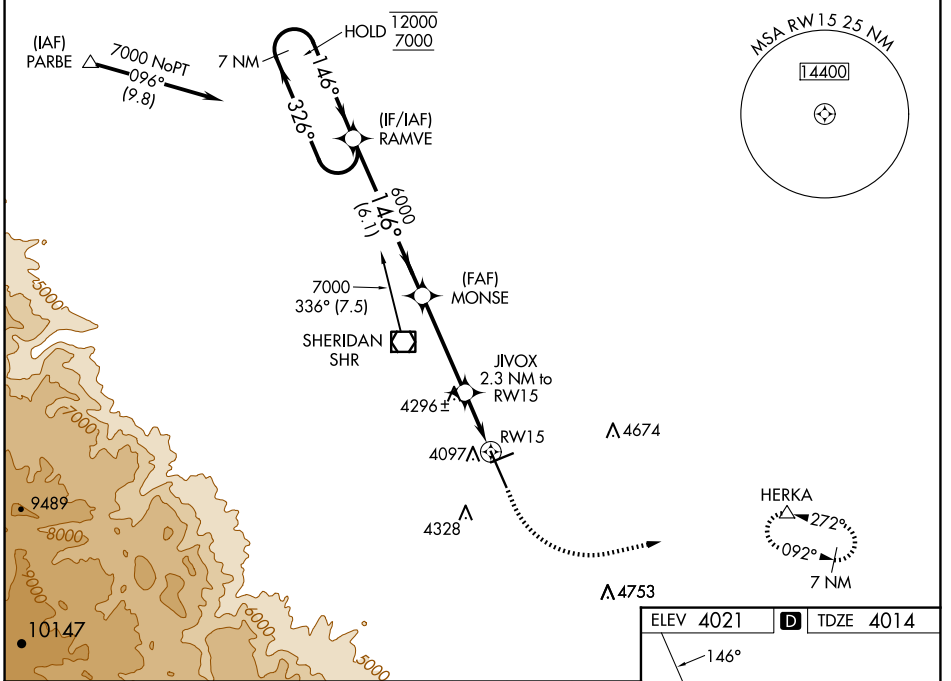
WAAS CH <b>81899</b> <b>W15A</b>	APP CRS <b>146°</b>	Rwy Idg <b>8301</b> TDZE <b>4014</b> Apt Elev <b>4021</b>
--	------------------------	---

# RNAV (GPS) RWY 15

SHERIDAN COUNTY (SHR)

RNP APCH.	MISSED APPROACH: Climb to 4500 then climbing left turn to 7100 direct HERKA and hold, continue climb-in-hold to 7100.
<p><b>V</b> Circling to Rwy 24 NA at night. For uncompensated Baro-VNAV systems, LNAV/VNAV NA below -26°C or above 51°C. When local altimeter setting not received, procedure NA.</p> <p><b>A</b></p> <p><b>-19°C</b></p>	

ASOS <b>135.175</b>	SALT LAKE CENTER <b>127.75 351.9</b>	UNICOM <b>123.0 (CTAF)</b>
------------------------	---	-------------------------------



CATEGORY	A	B	C	D
LPV DA		4264-3/4	250 (300-3/4)	
LNAV/VNAV DA		4292-7/8	278 (300-7/8)	
LNAV MDA	4560-1	546 (600-1)	4560-1 5/8	546 (600-1 5/8)
<b>C</b> CIRCLING	4600-1 579 (600-1)	4640-1 619 (700-1)	4860-2 1/2 839 (900-2 1/2)	5220-3 1199 (1200-3)

HIRL Rwy 15-33 **L**  
MIRL Rwy 6-24 **L**  
REIL Rws 6, 15, and 24 **L**

NW-1, 23 JAN 2025 to 20 FEB 2025

NW-1, 23 JAN 2025 to 20 FEB 2025