

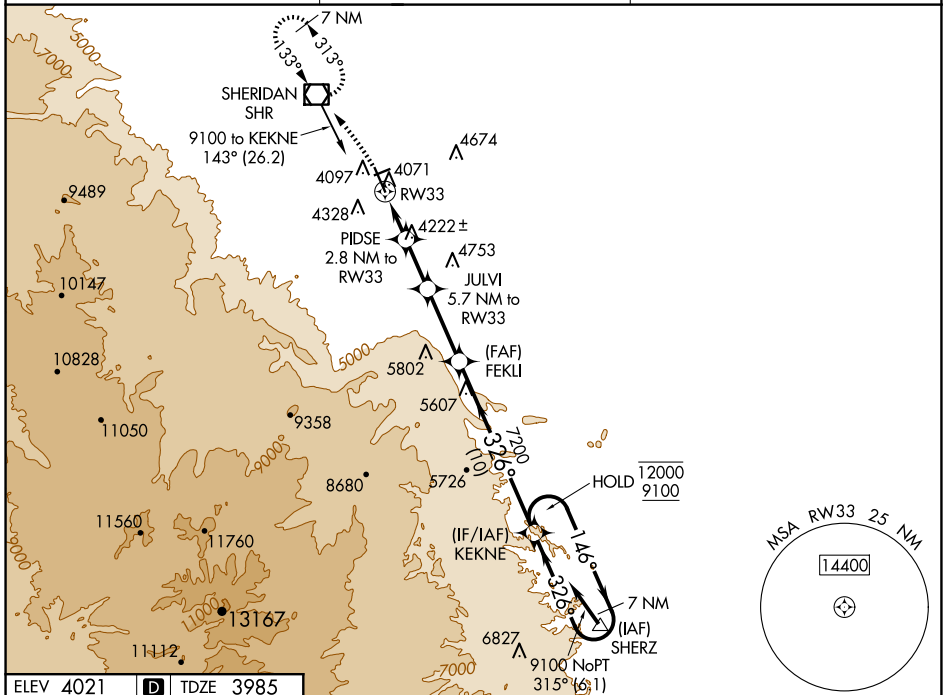
WAAS CH <b>65699</b> <b>W33A</b>	APP CRS <b>326°</b>	Rwy Idg TDZE Apt Elev	<b>8301</b> <b>3985</b> <b>4021</b>
--	------------------------	-----------------------------	---

# RNAV (GPS) RWY 33

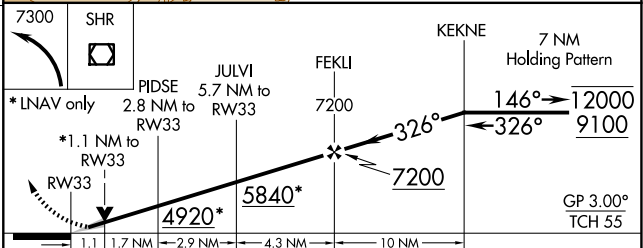
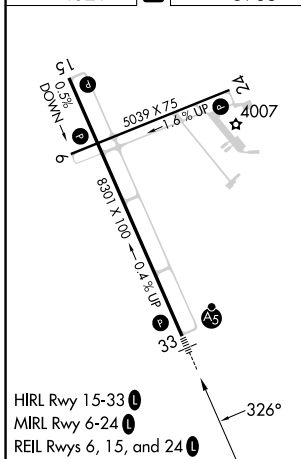
SHERIDAN COUNTY (SHR)

RNP APCH.	MALSR	MISSED APPROACH: Climbing left turn to 7300 direct SHR VOR/DME and hold, continue climb-in-hold to 7300.
Circling to Rwy 24 NA at night. Baro-VNAV NA. When local altimeter setting not received, procedure NA. -19°C		

ASOS <b>135.175</b>	SALT LAKE CENTER <b>127.75 351.9</b>	UNICOM <b>123.0</b> (CTAF)
------------------------	---	-------------------------------



ELEV 4021		TDZE 3985
-----------	--	-----------



CATEGORY	A	B	C	D
LPV DA		4205-1/2	220 (200-1/2)	
LNAV/VNAV DA		4380-3/4	395 (400-3/4)	
LNAV MDA	4380-1/2	395 (400-1/2)	4380-5/8	395 (400-5/8)
CIRCLING	4600-1 579 (600-1)	4640-1 619 (700-1)	4860-2 1/2 839 (900-2 1/2)	5220-3 1199 (1200-3)

NW-1, 23 JAN 2025 to 20 FEB 2025

NW-1, 23 JAN 2025 to 20 FEB 2025