

VOR/DME SHR	APP CRS	Rwy Idg	8301
113.55	131°	TDZE	4014
Chan 82(Y)		Apt Elev	4021

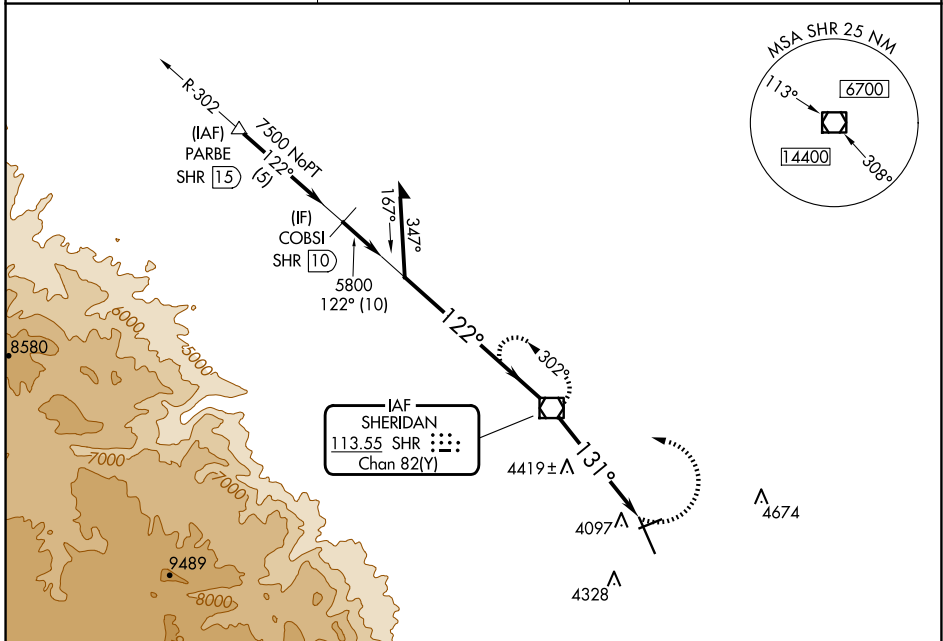
VOR RWY 15

SHERIDAN COUNTY (SHR)

When local altimeter setting not received, procedure NA. Night landing: Rwy 24 NA.

MISSED APPROACH: Climbing left turn to 7000 direct SHR VOR/DME and hold, continue climb-in-hold to 7000.

ASOS 135,175	SALT LAKE CENTER 127.75 351.9	UNICOM 123.0 (CTAF) 1
------------------------	---	---------------------------------



NW-1, 23 JAN 2025 to 20 FEB 2025

NW-1, 23 JAN 2025 to 20 FEB 2025



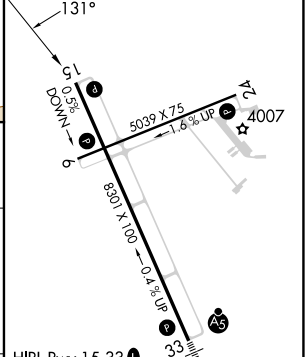
VGSI and descent angles not coincident (VGSI Angle 3.00/TCH 50).

Remain within 10 NM

7000	302°	SHR VOR/DME
5800	122°	SHR 3.1
	131°	SHR 5

3.1 NM 1.9 NM

ELEV 4021	D	TDZE 4014
-----------	---	-----------



HIRL Rwy 15-33 1
MIRL Rwy 6-24 1
REIL Rws 6, 15, and 24 1

FAF to MAP 5 NM

CATEGORY	A	B	C	D
S-15	4680-1	666 (700-1)	4680-1 7/8	666 (700-1 7/8)
CIRCLING	4680-1	659 (700-1)	4860-2 1/2 839 (900-2 1/2)	5220-3 1199 (1200-3)

Knots	60	90	120	150	180
Min:Sec	5:00	3:20	2:30	2:00	1:40