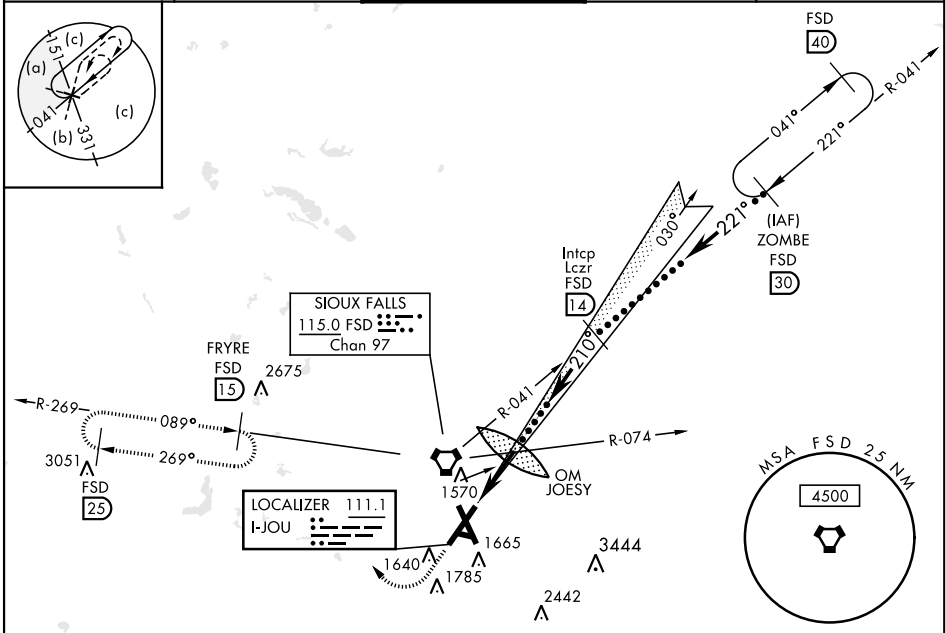


SIoux FALLS, SOUTH DAKOTA

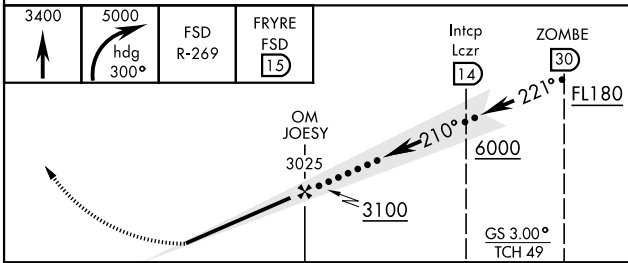
# HI-ILS or LOC RWY 21

LOC I-JOU <b>111.1</b>	APCH CRS <b>210°</b>	Rwy ldg <b>8999</b> TDZE <b>1430</b> Arprt Elev <b>1430</b>	AL-396 [USAF]	JOE FOSS FLD (KFSD)
DME required. RADAR required for procedure entry.			MALSR	MISSED APPROACH: Climb to 3400 then climbing right turn to 5000 on heading 300° and FSD R-269 to FRYRE 1.5 DME and hold.

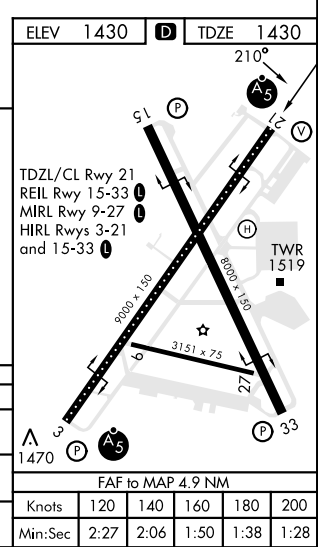
ATIS <b>126.6</b>	SIoux FALLS APP CON <b>125.8 306.2</b>	SIoux FALLS TOWER ★ <b>118.3(CTAF) 257.8</b>	GND CON <b>121.9 348.6</b>	ASR
----------------------	---	---	-------------------------------	-----



EMERG SAFE ALT 100 NM 4600



CATEGORY	C	D	E
S-ILS 21*	1630/18	200	(200-½)
S-LOC 21**	1920/50	490 (500-1)	1920/60 490 (500-1½)
CIRCLING	2060-1¾ 630 (700-1¾)	2200-2½ 770 (800-2½)	2300-3 870 (900-3)



SIoux FALLS, SOUTH DAKOTA

43° 35' N-96° 45' W

JOE FOSS FLD (KFSD)

Amdt 6C 04NOV21

# HI-ILS or LOC RWY 21

NC-1, 23 JAN 2025 to 20 FEB 2025

NC-1, 23 JAN 2025 to 20 FEB 2025