

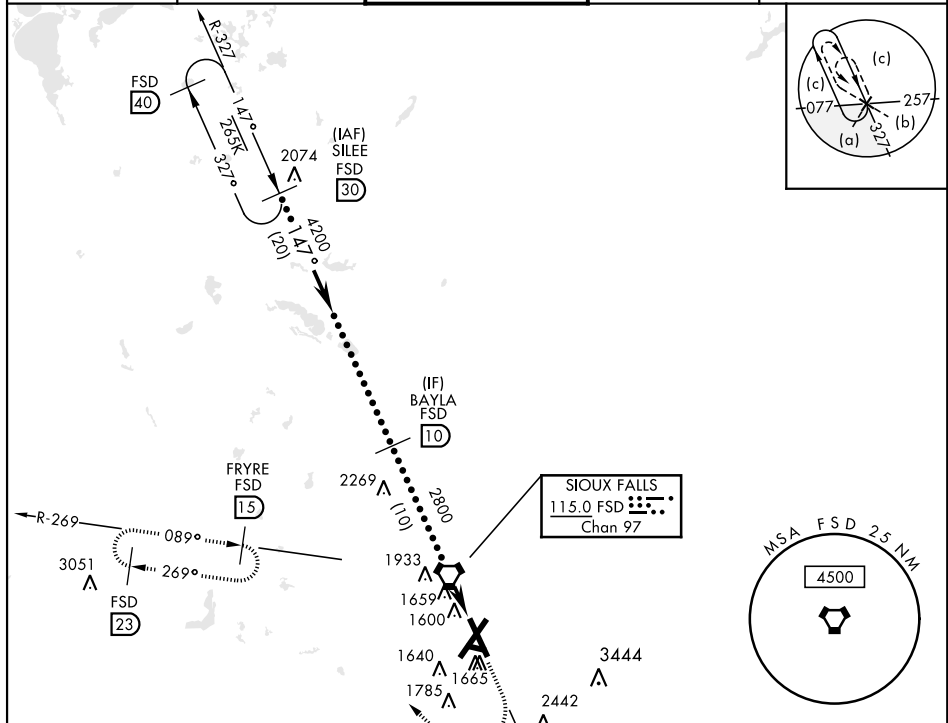
SIoux FALLS, SOUTH DAKOTA

# HI-TACAN RWY 15

VORTAC FSD <b>115.0</b> Chan <b>97</b>	APCH CRS <b>147°</b>	Rwy ldg <b>8000</b> TDZE <b>1429</b> Arpt Elev <b>1430</b>	AL-396 [USAF]	JOE FOSS FLD (KFSD)
--	-------------------------	--	---------------	---------------------

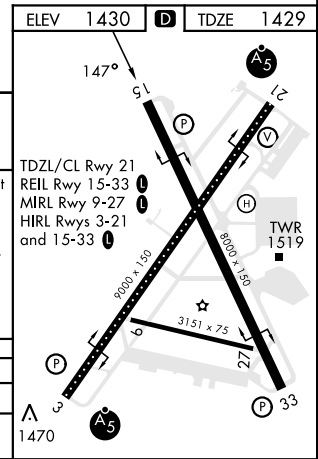
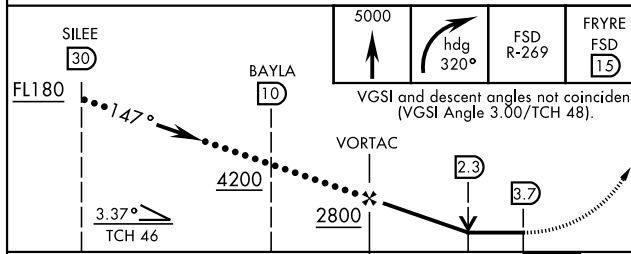
**MISSED APPROACH:** Climb to 5000 then right turn on heading 320° and FSD R-269 to FRYRE 15 DME and hold.

ATIS <b>126.6</b>	SIoux FALLS APP CON <b>125.8 306.2</b>	SIoux FALLS TOWER ★ <b>118.3(CTAF) 257.8</b>	GND CON <b>121.9 348.6</b>	ASR
----------------------	---	---	-------------------------------	-----



ELEV <b>1430</b>	TDZE <b>1429</b>
------------------	------------------

EMERG SAFE ALT 100 NM 4600



CATEGORY	C	D	E
S-15	1920-1¾	491	(500-1¾)
☉ CIRCLING	2060-1¾ 630 (700-1¾)	2200-2½ 770 (800-2½)	2300-3 870 (900-3)

SIoux FALLS, SOUTH DAKOTA 43° 35'N-96° 45'W JOE FOSS FLD (KFSD)

# HI-TACAN RWY 15

Amtd 8C 04NOV21

NC-1, 23 JAN 2025 to 20 FEB 2025

NC-1, 23 JAN 2025 to 20 FEB 2025